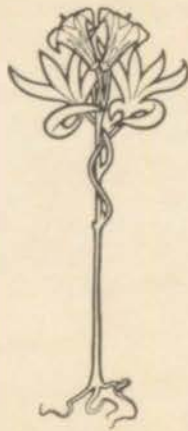
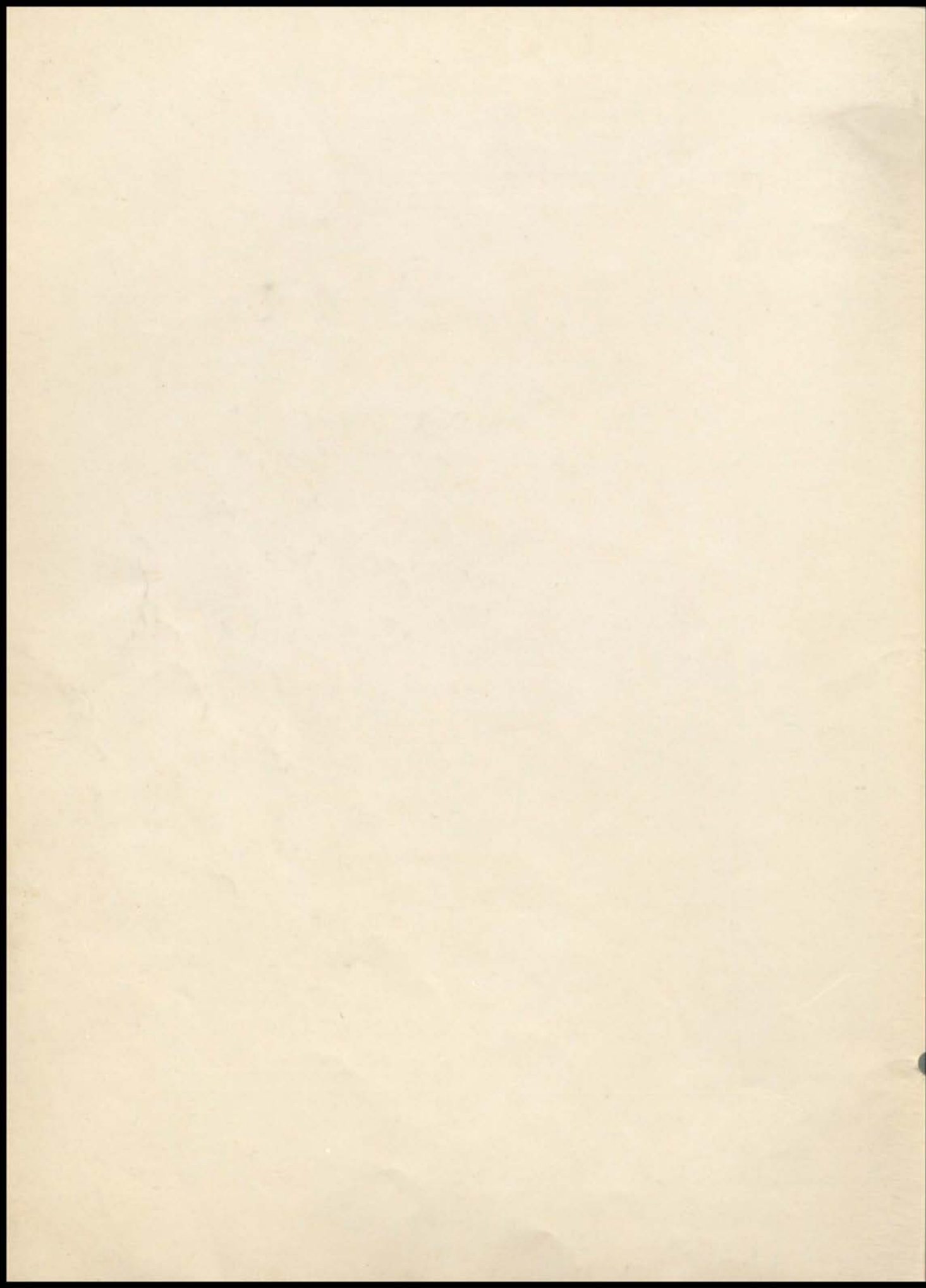


# THE DIAL

'15



PUBLISHED BY THE SENIOR CLASS OF MAR-  
SHALL HIGH SCHOOL, MARSHALL, MICH.





# BOARD OF EDUCATION



DR. S. K. CHURCH



W. R. SIMONS



HON. C. E. GAUSS



E. L. BIGELOW



E. B. STUART



---

The Class of 1915 dedicate  
their annual  
The Dial  
to  
Miss Gertrude B. Smith  
in gratefulness for the help and encouragement  
she has extended to the class  
as well as  
for the many good times she has  
planned for them

---



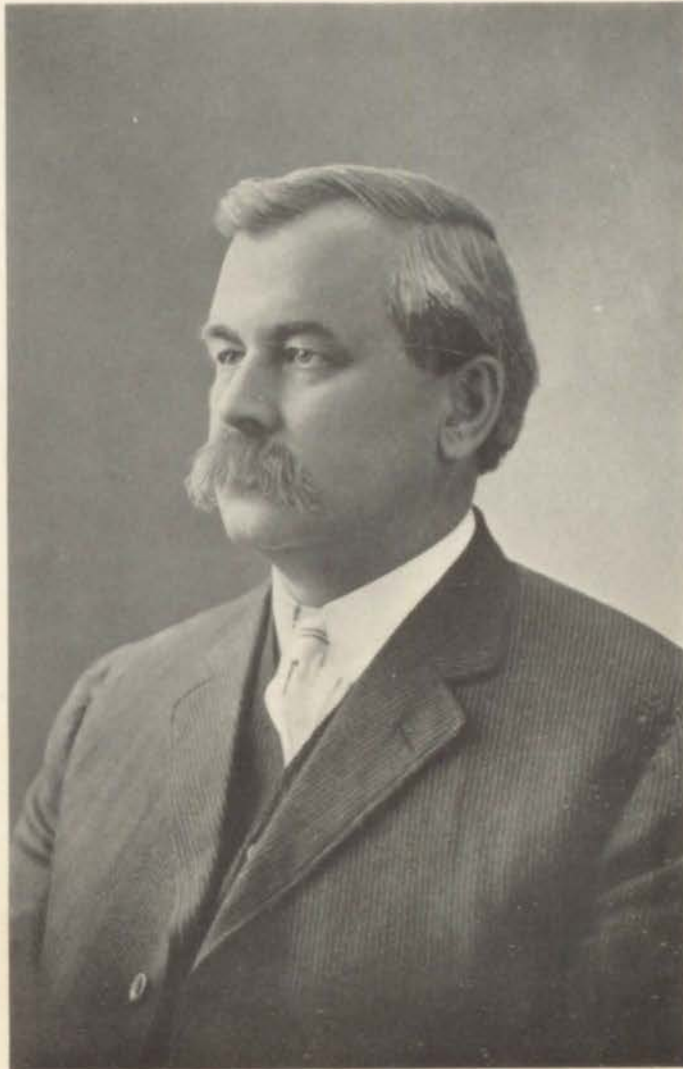


MISS GERTRUDE B. SMITH



PAUL H. KELLEY, A. B.  
Principal





L. A. McDIARMID, A. B.  
Superintendent

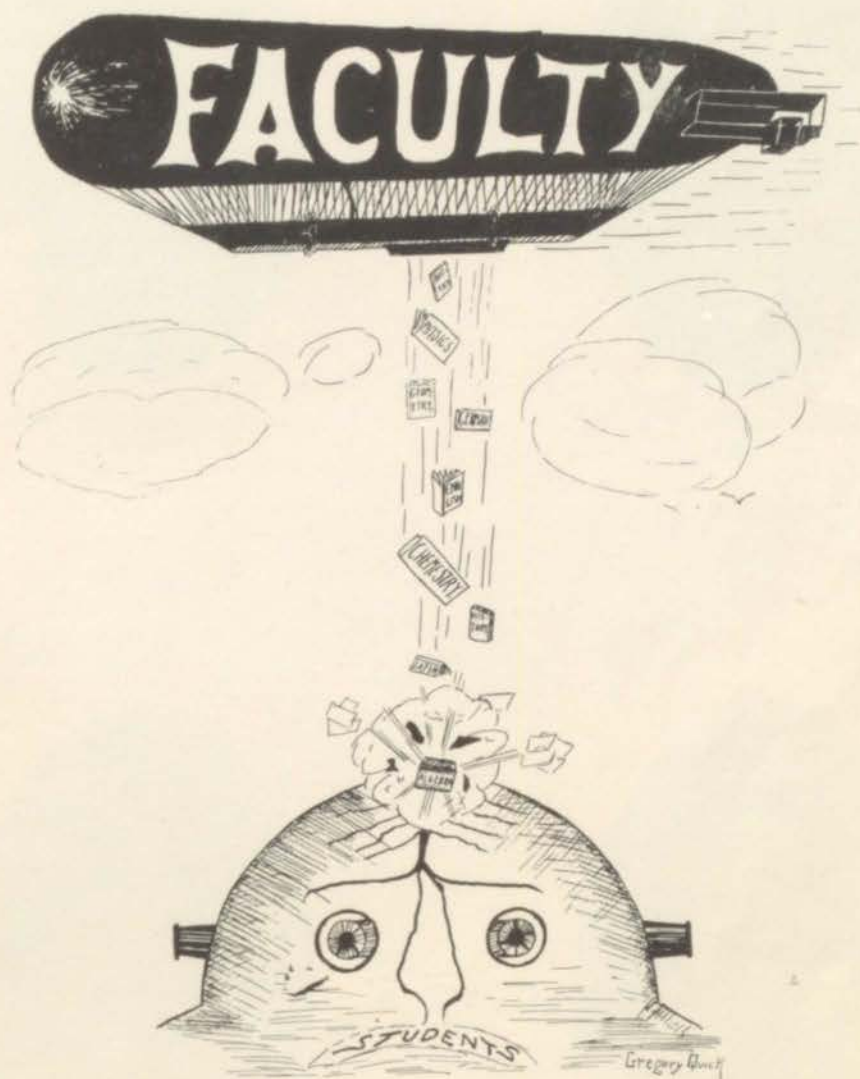
## An Appreciation

THE DIAL staff would like to express their appreciation to students and Faculty for the splendid support tendered by them in contributing material for the annual.

We have no apologies to offer for our efforts, for THE DIAL represents our best endeavor, but we should like to ask our readers to be a little lenient in their criticisms, as this is the first attempt any class of Marshall High School has ever made to edit such a book.

We also wish to thank the business men who have so generously responded through the purchase of advertising space and who have therefore made the project possible. We sincerely hope that THE DIAL will prove such a success as to warrant the publication of an issue by the class of 1916 and all succeeding classes of Marshall High School.

We wish to acknowledge the valuable assistance rendered by President Simons and Secretary Grohens, of the Board of Commerce, in giving us a written endorsement of the enterprise at its very inception.





MARY BISHOP, A. B.  
English



SELMA HOYSETH, A. B.  
German



HELEN K. LOMAN, A. B.  
Latin



MARJORIE DAVIS, A. B.  
Mathematics





FRANCES LEACH, A. B.  
English



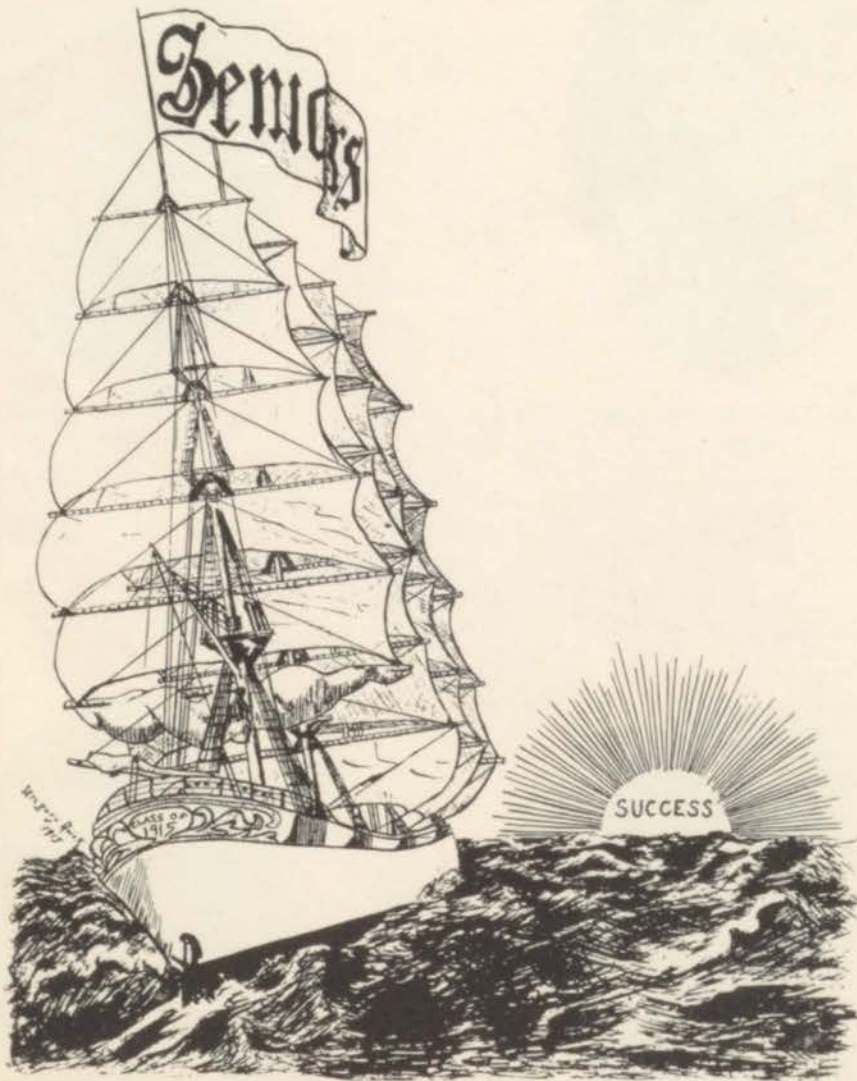
N. R. SMITH, A. B.  
Science



CHESTER A. SPAULDING, A. B.  
Coach, Agriculture



OLIVE PEARL PALMER  
Drawing, Sewing





# SENIORS



## Senior Class Officers

ORVILLE SCHROEDER, President

VADA MATER, Vice-President

PHOEBE MILLER, Secretary

KENNETH RONAN, Treasurer

## ANNUAL



MILDRED MILLER  
Editor-in-Chief



HENRY AUSTIN RENIGER  
Business Manager



ORVILLE BARNES SCHROEDER  
Boys' Athletic Editor



BERNICE BOURKE  
Society Editor



BESSIE MARIE VOGT  
Girls' Athletic Editor



BENJAMIN HENRY BENTLEY  
Literary Editor



## STAFF



PHOEBE ELLEN MILLER  
Art Editor



VADA EDISA MATER  
Art Editor



GREGORY QUICK  
Art Editor



AMBER RAY HUTCHINS  
Picture Manager



LYNN M. CAREY  
Grind Editor



INEZ GROHENS

Was easily chosen valedictorian for the 1915 class. Her scholarship record throughout her High School course has been uniformly excellent. The splendid record which she has maintained has been due perhaps primarily to her capacity for concentrated thought, to her perseverance, and to her conscientious performance of duty.

KENNETH RONAN

Was chosen unanimously by his class as its orator. This honor was thus accorded him for two reasons: First, because he was the logical choice, having represented the school in the oratorical contest; and, second, because he was ranked third in scholarship, having failed for second place by only a few points.



MARIAN COOK,

Winner of second scholarship honors, was chosen salutatorian of the 1915 class because of her splendid record, gained especially during her Senior year. Miss Cook, while endowed with a naturally alert intellect, credits her success to habits of industry and perseverance which she has developed as a student in the Marshall schools.



AILEEN GRACE



IRENE FORD



BERNARD STEPHEN MEYERS



EDITH EMMALINE MCWETHY



HAROLD CLAUDE HILL



CARLTON JAMES POWERS



JOSEPH GEORGE HUTCHINS



HAZEL LUCILE BECKWITH



LAVERNE FRANKLIN CURTIS



BLANCHE IDA MERCHANT





EDNA MINNIE HURLBERT



AURA ESTES SMITH



E. STANLEY LAMB



OLIVE BELL MAHRLE



CORNELIA MARIE OSBORN



RACHEL VIRGINIA GILLETT

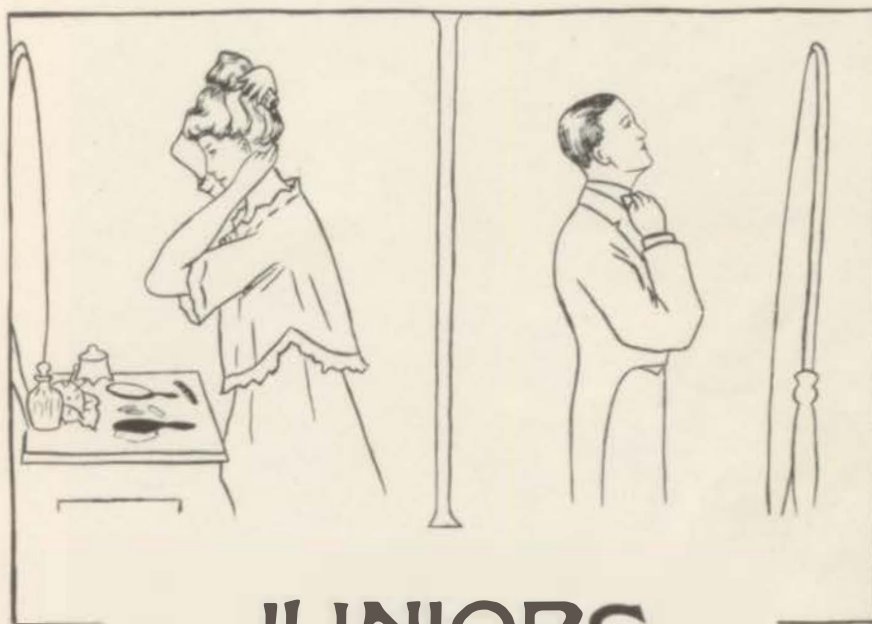


LEE STARR SEEGAR

CATHARINE MURPHY

(Picture  
Unavailable)





# JUNIORS



## Junior Class Officers

MAX RENIGER, President

ALICE CUNNINGHAM, Vice-President

ISABELLA TINGAY, Secretary

DEVILLE HUBBARD, Treasurer



#### JUNIOR CLASS ROLL

Albaugh, Alice	Avery, Grace	Bisel, Wesley	Brown, Ethel	Brownfield, Oscar	Burge, Eva	Burkhardt, Ruth
Camp, Victor	Cunningham, Alice	Cunningham, Roswell	Baty, Clarence	Davis, Claud		
Eipper, Neva	Freed, George	Faulkner, George	Paul, Grace	Hoeltzel, Dale	Hiney, Chester	Reniger, Max
Rimmer, Luella	Rogers, Marilda	Stuart, Allan	Thunder, Grace	Weatherwax, Charles	Williams, Norma	



# School Song

---

## OUR OLD HIGH

Once again, here as schoolmates assembled,  
We fain would lift our hearts in song,  
To our High School, our dear Alma Mater,  
Let gladness the moments prolong;  
We are proud of her lads and her lasses,  
Of honors won in days gone by,  
So here's a cheer for our old High School  
For our old High School, our dear old "High"!

### *Chorus:*

Here's to our classes, here's to our lasses,  
Here's to the lads they adore;  
Here's to the Senior so mighty, Juniors so flighty,  
"Freshy" and Soph-o-more;  
Let mirth and gladness "banish all sadness,"  
And as the days go by, you'll find us ready  
And steady, boosting for Marshall High.

Soon for us will the school days be ended,  
The dreams of youth that fade so fast,  
But we know that the heart oft will ponder,  
In memory o'er scenes that are past;  
There are joys that will long be remembered,  
And friendships, too, that ne'er can die,  
Then here's a cheer for our old High School,  
For our old High School, our dear old High!



# SNAP-SHOTS



# SOPHOMORES



## Sophomore Class Officers

FITZHUGH BREWER, President

MARY EDGERTON, Vice-President

RACHAEL MCKINSTRY, Secretary

VERA CHURCH, Treasurer



# SOPHOMORE CLASS ROLL

Ackerson, Lorena  
 Arndts, Arthur  
 Boughton, Phil  
 Beckwith, Beatrice  
 Brewer, Fitzhugh  
 Church, Vera  
 Clark, Mabel  
 Comstock, Vivian  
 Cook, Ralph  
 Edgerton, Mary  
 Fredenhurg, Donald

Gauss, David  
 Gibbs, Ethel  
 Gordon, Laura  
 Hillabrandt, Willis  
 Hubbard, Deville  
 Hughes, Helen  
 Hulett, Robert  
 Hutchins, Wayne  
 Jones, Hazel  
 Joy, Catharine

Joy, Margaret  
 Kagamaster, Neva  
 Lee, Frances  
 Marquardt, Margaret  
 Marston, Lucy  
 Marston, Myrtle  
 McKinstry, Rachael  
 Noneman, Erwin  
 Noneman, Harold  
 Owen, Irene

Priest, Belmont  
 Radford, Harold  
 Rapp, Esther  
 Reagle, Alverta  
 Reiter, Belle  
 Reyer, Bertha  
 Quick, Gregory  
 Sackett, Esther  
 Sanders, Arlo  
 Schrieber, Zella

Schroeder, Ethel  
 Shear, Willard  
 Sleeper, Elizabeth  
 Snyder, Blanch  
 Tingay, Isabella  
 Tingay, Robert  
 Tucker, Ruth  
 Van Arman, Bernice  
 Van Arnan, Ruth  
 Walker, Bernice  
 Williams, Doris



# FRESHMEN



## Freshman Class Officers

JAMES GUSTIN, President

OLIVE COLEMAN, Vice-President

BERT KERNER, Secretary

BERKLEY ANDERSON, Treasurer





## FRESHMAN CLASS ROLL

Aiken, Roscoe  
 Allen, Gladys  
 Anderson, Berkley  
 Bangham, Fern  
 Barkley, Susie  
 Bentley, Marie  
 Boughton, Louise  
 Breakey, Hazel  
 Brooks, Bernardine  
 Carver, Floris  
 Casper, Kirk  
 Clark, Mary

Clute, Arlene  
 Clute, Flora  
 Coleman, Olive  
 Corliss, Bromby  
 Cosier, Pauline  
 Day, Clarabella  
 Fox, Helen  
 Garin, Louise  
 Gray, Harold  
 Greenman, Edith  
 Gustin, James  
 Haskins, Gladys

Heidenreich, Teophil  
 Hollon, Harriett  
 Hotchkiss, Raymond  
 Howard, Hilda  
 Hutchins, Beatrice  
 Hutchins, Helen  
 Jennings, Herman  
 Jones, Frank  
 Kagamaster, Leo  
 Katz, Leone  
 Kerner, Bert  
 Luscher, Pearl

Mahrle, Ralph  
 Marston, Kamillas  
 Mater, Lila  
 McWethy, Leonard  
 McBride, Louise  
 Miller, Albert  
 Noneman, Norma  
 Powers, Hess  
 Pryer, Mildred  
 Rapp, Florence  
 Rapp, Gladys  
 Reinke, Herman

Rentschler, Herman  
 Rimmer, Walter  
 Sackett, Lewis  
 Sayer, Lance  
 Seegar, Mildred  
 Schroeder, Roy  
 Scramlin, Mabel  
 Shultz, Dewey  
 Sleeper, Raymond  
 Williams, Gladys  
 Wilson, Harry  
 Wood, Lawrence





## The Athletic Association

The Athletic Association of Marshall High School has, since 1913, been placed upon a much more efficient basis by the adoption at that time of a formal constitution, which contains many splendid ideas and, with slight modifications from year to year to meet changing conditions, should give athletics a decidedly good working basis. The basic idea of the constitution is a triple check system, providing for a treasurer, a president and the auditor. While this plan might be simplified and therefore improved, the idea is a splendid one.

This year the management of the Association secured the Thanksgiving game to be played here in Marshall, and as a result the largest attendance ever recorded for high school athletics netted the Association a handsome sum. Next year, while the Albion game will be played there under a two-year contract, the prospects for a splendid football team and the surplus existing in the treasury insure a successful year in athletics.

The officers of the Association for the past year were: Kenneth Ronan, *President*; Vada Mater, *Vice-President*; Ethel Schroeder, *Secretary*; Henry Reniger, *Treasurer*; Principal P. H. Kelley, *Faculty Manager (Auditor)*.



## The Delphic Literary Society

The Delphic Literary Society was the first ever formed in Marshall High School. It was organized during the past year and held two meetings—the first just before the Christmas vacation, and the second shortly after Washington's birthday. The purpose of the society is to stimulate literary activity in the school by having debates, recitations, readings, etc. It also gives excellent opportunity for the development of musical talent. In the initial meeting the feature was a debate between members of the Junior and Senior classes. The question was, "Resolved, That the Income Tax is a Desirable Form of Taxation." The affirmative side, upheld by the Seniors, was victorious by a vote of two to one. The judges were Miss Bishop, Miss Leach and Mr. Spaulding. Both of this year's programs were a credit to the institution and gave a splendid start to this most desirable school activity. The officers of the Delphic Society for the past year were: Benjamin Bentley, *President*; Mildred Miller, *Vice-President*; Alice Cunningham, *Secretary*. To these officers is due much of the success for the first attempt along this line.

# Fishing

BY BENJAMIN BENTLEY

When it's hot in the morn,  
And they're planting the corn,  
Then the longing is born  
To go fishing.

You are expected to grind.  
But you oftentimes find  
A wool-gathering mind  
Going fishing.

So in school we dream  
Of the lake and the stream  
And continually seem  
To go fishing.

We see a dark hole  
Where green waters roll  
And a bright-sanded shoal  
In our dreaming.

Fix up your reel.  
Did you bring 'long your creel?  
We'll soon have a meal  
Tho' we're dreaming.

Hook on a worm,  
It's pain makes it squirm;  
'That's the life of a worm—  
That and dreaming.

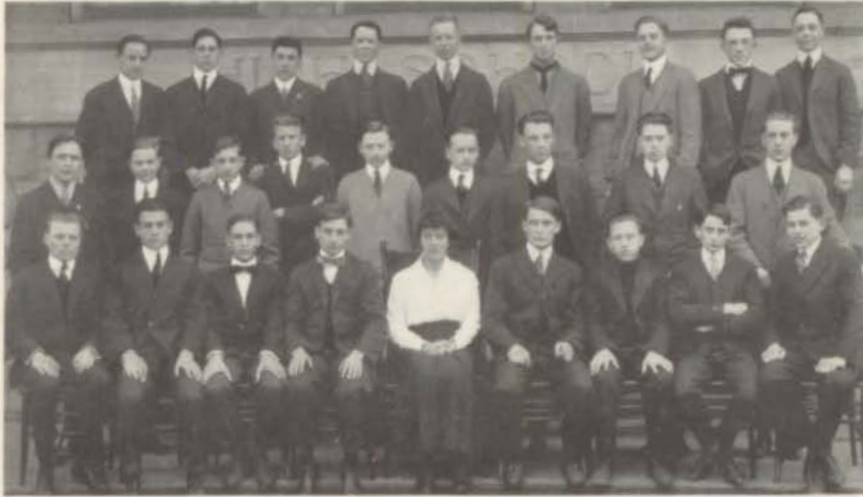
Ah, see the dull flash  
There near the white ash,  
Get steeled for a crash—  
It is coming.

Keep a tight line,  
You're doing fine.  
See his scales shine!  
Now he's coming.

I'll get out the net,  
We haven't him yet;  
Now get well set—  
There! he's landed.

What! Oh yes, my books.  
I was thinking of hooks.  
My! what dark looks.  
Now I'm ended.





## Boys' Glee Club

For the first time in several years a Boys' Glee Club was organized early in the past year. It was under the direction of Miss Helen K. Loman and proved a big success. The young men did very creditably and not only appeared before the High School on several occasions, but also in the plays given by the Monday Civic Club Improvement Committee, and in the annual Junior farce. They were received with the greatest enthusiasm upon every appearance. Great credit is due Miss Loman for the competent way in which she directed the organization. The officers of the club were: Orville Schroeder, *President*; Paul Grace, *Treasurer*; Dale Hoeltzel, *Secretary*.



GIRLS' GLEE CLUB

## Girls' Glee Club

The Girls' Glee Club, or chorus, which has existed in Marshall High School for a number of years, continued its operations during the past season. Credit was given for consistent work and there was a large membership. Several duets and quartets were rendered by members of the organization before the Literary Society and at other times during the year. With the splendid loyalty and enthusiasm which characterizes the girls of Marshall High School, this organization should continue to grow and develop from year to year. The work of this organization was very kindly assumed this year by Miss Flora Davis, instructor in music in the public schools.

## A Quest for Mars

"Hi there, Jack, come on down—it's too cold to eat up there. Trot Nancy down and we'll eat here. Get a wiggle on you, now!!"

The voice could scarcely be distinguished from the great roaring and rushing air currents, but in a second it dawned upon me that my partner was evidently speaking to me, so grabbing Nancy by the collar, we rushed down the steps leading to the bunking room and found there a sight to tempt a king. Slapjacks by the peck were piled on plates beside Jack. You know the kind—the ones that hit the spot when you're downright hungry. And a golden stream of syrup flowed from the kettle in Jack's hand to the waiting dish.

"All ready; dig in!" announced our chief cook and bottle washer, but Nancy and I needed no invitation, for we were already making a dive for those slapjacks. After I'd disposed of forty-nine, Jack of thirty-two and Nancy,—well, we couldn't count Nancy's,—we went above board with a feeling of contentment which I hadn't experienced since we had set out on our quest for Mars, six months before. It was the sensation which comes when every want seems granted and "God's in his heaven, all's right with the world" keeps running through your mind. A great rush of air met my joyous countenance and a sudden lurch of the "bird" sent me sprawling on deck with Jack on top and Nancy barking with delight. By the way, Nancy is our dog, and some dog, too.

No more walks on deck for me that day. I was indisposed.

"Eight bells and all's well!" cut the sharp voice of our guide, Tod, upon the night air.

"Wish that cussed little fool'd shut up. It won't be 'all well' with him if he keeps that up," I growled to my snoring bedfellow.

No answer. All was still as death for one half second. Then biff, bang, bing!! The awful crash knocked Jack off his equilibrium and the next minute we were sitting up, rubbing our sleepy eyes, with Nancy yelping her loudest.

"What the devil, who's got me now?" were the muttered exclamations from Jack, mixed with Nancy's howls of despair. But not for long were we kept in this awful suspense. Stumbling to his feet, Jack staggered to the stairs and up to the deck.

"Gosh all hemlock! Guy, it's Mars — Mars for fair!"

Never shall I forget the sight which met my inquisitive gaze when I managed to join Jack. It sure enough was Mars, for there staring right at us was a huge sign with letters of fire that announced to us that we were at our journey's end. But, great cats! the people, or rather the inhabitants, of Mars, were beyond our wildest dreams, for they were nearer to what we Yankees call pigs and the squeal they possessed would have scared Satan himself. As for our welcome, we shall leave that till we have more time, for it was deserving years of praise.

## Twilight

BY PHOEBE MILLER, '14

The sun has set in the quiet summer sky and the rosy glow is reflected in the peaceful lake.

A fisherman, called from his fishing, pulls his boat toward the shore, leaving a white trail behind him that slowly widens, disturbing the calm of the lake.

The many sounds that arise at this quiet hour seem all a part of the sweet stillness. Away in the distance a cow's bell sounds and a voice is calling to supper. The fisherman's boat grates on the beach, and as he carries his fish toward the cottage, a dog jumps to greet him and barks noisily.

A screen door opens and closes with a bang and the fisherman, the only human being in the picture, disappears.

The soft good-night twitter of the birds dies slowly in the grove above the beach and the splash of fish jumping in the lake takes its



place. The wavelets widening in circles from these tiny splashes reflect the soft lavenders and pink of the western afterglow, fading again to the deep blue of the sky as they die in the distance.

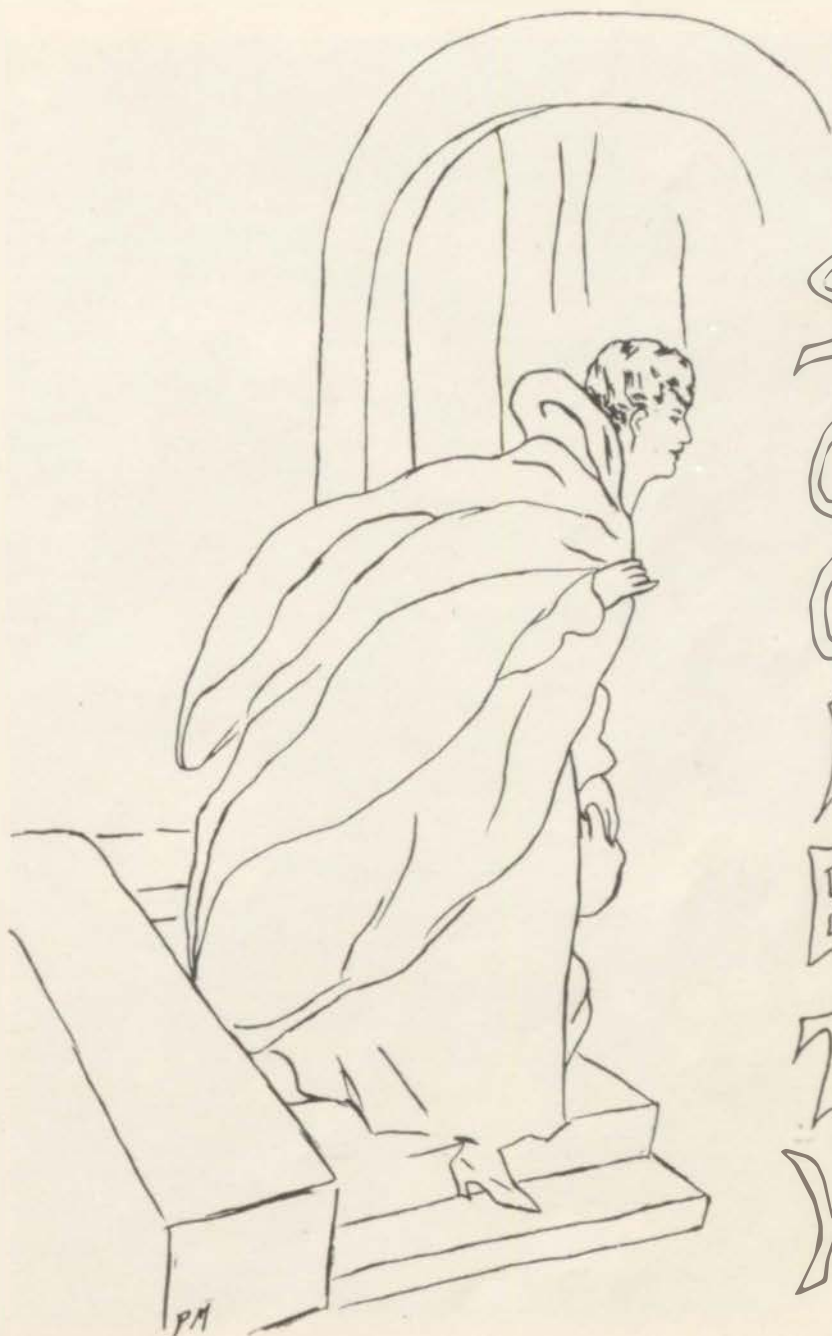
The guttural grunt of a bullfrog comes from the mass of rushes and cattails by the water's edge, and is repeated by others all around the lake. A turtle slips from a lily pad into the water as though afraid of the twinkling star that peeps out at it from behind the grove.

The tints have faded from the west, and the deep blue sky is reflected in a silvery lake, rippling slightly with the new night breeze.

The lights appear, one by one, in the farmhouse windows, and the smoke rises in a single spiral from a camp-fire on the beach.

The night has fallen, and dipping our paddles in the water, we leave the twilight picture.





S  
O  
C  
I  
E  
T  
Y



HALLOWEEN PARTY

## Hallowe'en Party

The girls of the Senior class entertained the boys at a Hallowe'en party in the drawing room of the High School. The color scheme, which was orange and black, was carried out effectively in the decorations and in the delightful refreshments which were served. Mr. and Mrs. Ned Smith and Miss Mary Bishop acted as chaperones and enlightened the company with many witty anecdotes.

## Astronomy Parties

The Senior class of 1915 has enjoyed many social functions, two of the pleasantest of these being the astronomy parties given at the High School. Miss Smith did much to make these affairs both an educational and a social success. The first half of the evenings was devoted to the study of astronomy, while the latter half was taken up with clever amusements. The Christmas party was an unusual success. The spirit of the season was carried out in the decorations of evergreens and Christmas bells, while on the Christmas tree and in the stockings were amusing presents for each student and member of the Faculty.

## Football Banquet

The most successful feature of the school year was the banquet given by the High School in honor of the football boys at the close of the season. The affair was held in the lower halls of the High School, where separate tables were arranged for the different classes, the Faculty, the School Board and the squad. The class tables were trimmed with flowers suggestive of their class colors, while the speakers' table held the Marshall High School loving-cup filled with American Beauty roses. The guests were served with a delicious menu, after which there were clever toasts and speeches, Principal Kelley acting as toastmaster. Hoyt's Orchestra rendered many pleasing selections throughout the evening.



The Junior class of Marshall High School presented "Miss Cherry Blossom," a Japanese musical comedy in three acts, at the Empire Theatre on the evenings of May 7, 8 and 9, 1914. The play was much enjoyed by everyone attending, it being the first of its kind ever presented by the High School. The different roles were handled with great skill and the musical numbers were very pleasing.

In the story of the play, Miss Evelyn Barnes, an American girl born in Japan, and whose parents died of fever, was brought up as a Japanese maiden. Her father's secretary used her property for his own ends. When Evelyn, who was born as Cherry Blossom, was about eighteen, Worthington (the secretary) returned to Japan on his yacht with a party of friends. One of the men, John Henry Smith, fell in love with Cherry and wished to marry her, but Kokomo, who brought her up as his own daughter, wanted her to marry Togo, a rich politician. The action of the play centered around Jack's efforts to outwit Togo and Kokomo. Eventually Cherry learned her true identity, came into her property, married Jack and all ended happily.

#### CAST OF CHARACTERS

CHERRY BLOSSOM	Miss Ruth Weissert
KOKOMO	Roy Smith
JOHN HENRY SMITH	John Bliss
HENRY FOSTER JONES	Dwight Cathcart
MR. HORACE WORTHINGTON	Henry Reniger
JAMES YOUNG	Orville Schroeder
JESSICA NANDERPOOL	Mildred Miller
TOGO	Thomas Johnson

The Junior Reception, given by the Class of 1915 for the graduating class of 1914, proved to be a unique entertainment. It was held at the Parish house, where both the Senior and Junior class colors were conspicuous in the decorations. The tables were decorated with bowls of roses and unshaded candles. A delicious menu was served and between courses the guests were entertained by appropriate renderings by Hoyt's Orchestra. The participants in the Junior play and the High School Faculty were guests at the banquet. James Mackey acted as toastmaster and introduced the Faculty and members of the respective classes as speakers of the evening.



May 14, 1915, the Senior boys gave a return party for the Senior girls. Mr. and Mrs. Ned Smith, Miss Selma Hoyseth, James Mackey and Miss Gertrude Smith acted as chaperones. The feature of the evening was a taffy pull, while later a spread was enjoyed in the drawing room.

## “The Time of His Life”

“The Time of His Life,” presented at the Empire Theatre, April 8, 9, 1915, by the Junior class of Marshall High School, under the direction of Principal Paul H. Kelley, was a very enjoyable dramatic entertainment and both performances were witnessed by enthusiastic audiences.

All those who participated might have been professionals, so perfectly at ease were they on the stage. The play contained three acts, with appropriate stage settings. The first and second acts were scenes in the Grey home at five o'clock in the afternoon, while the third act was in the library at 2.00 A. M. the next morning.

The play opened with George Freed in the role of Uncle Tom, an old colored butler, who was the porter in the Grey home. Paul Grace assumed the role of Bob Grey and Norma Williams appeared as Mrs. Grey. She and her brother, Allan Stuart, as Tom Carter, planned to entertain Max Reniger, as Peter Wycombe, Alice Albaugh, as Mrs. Peter Wycombe, and Eva Burge, as Dorothy Landon, the latter being secretly engaged to Mr. Tom Carter. Carter attired himself as a colored porter and acted the part of Uncle Tom. Dale Hoeltzel, who took the part of James Landon, with Mr. Grey on a visit, fell asleep in the library while Mr. Grey was about other duties, and when discovered by Mr. Wycombe, was taken for a burglar and tied to a chair. Police headquarters were notified and Officer Hogan came to take Mr. Landon to the station when Mr. Grey appeared and explained that Mr. Landon was his friend.



# SNAP-SHOTS

# FOOTBALL





FOOTBALL TEAM, 1944



## The Football Team

The Football Team of 1914 was up to the usual form of a Marshall team and possessed of a good fighting spirit, which gave them a successful season. Ten games were played, and out of these Marshall won six and tied one, thus being beaten but three times during the year. The splendid crowds which witnessed the games, especially the Thanksgiving game, made the season a good one from a financial standpoint.

The line-up was as follows:

Center—Deville Hubbard.

R. Guard—Carlton Powers.

L. Guard—David Gauss.

R. Tackle—Clarence Baty.

L. Tackle—Kenneth Ronan.

R. End—Fitzhugh Brewer.

L. End—Paul Grace.

Quarter-Back—Max Reniger (Captain).

R. Half—Aura Smith.

L. Half—Orville Schroeder.

Full Back—Roswell Cunningham.

Subs—Warren Beman, Dale Hoeltzel, Henry Reniger, Stanley Lamb.

Student Manager—Benjamin Bentley.

Faculty Manager—P. H. Kelley.

Total Points Scored during Season—Marshall, 229; opponents, 39.

Much of the credit due for this most successful season should be accorded to Coach Spaulding.

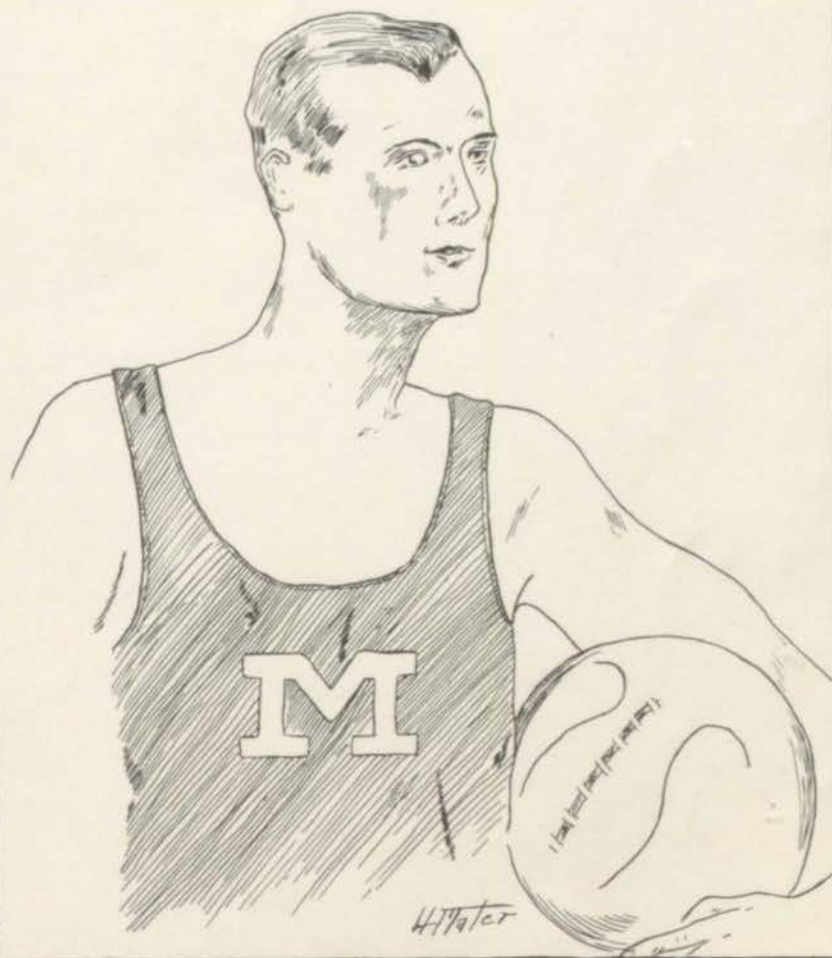




HENRY RENIGER  
LYNN CARY

STARR SEEGAR  
KENNETH RONAN

# BASKETBALL





BASKET-BALL TEAM

## Basket - Ball

The Basket-Ball Team this year was a good one and played some good fast games. The enthusiasm was better than ever and large crowds turned out to the games. The boys on the team had to fight hard for their places and nearly all the squad were in every game. The success of the team is shown by Marshall winning seven out of twelve games and clearing about seventy-five dollars.

The team lined up as follows:

Forwards: Capt. Paul Grace, Fitzhugh Brewer, Orville Schroeder, Benjamin Bentley.

Center—Roswell Cunningham, Kenneth Ronan.

Guards—Deville Hubbard, Max Reniger.

Coach—C. A. Spaulding.

Manager—Henry Reniger (Student); P. H. Kelley (Faculty).

Total Points Scored—Marshall, 329; opponents, 249.







## Girls' Basket-Ball Teams

### JUNIOR-FRESHMAN TEAM

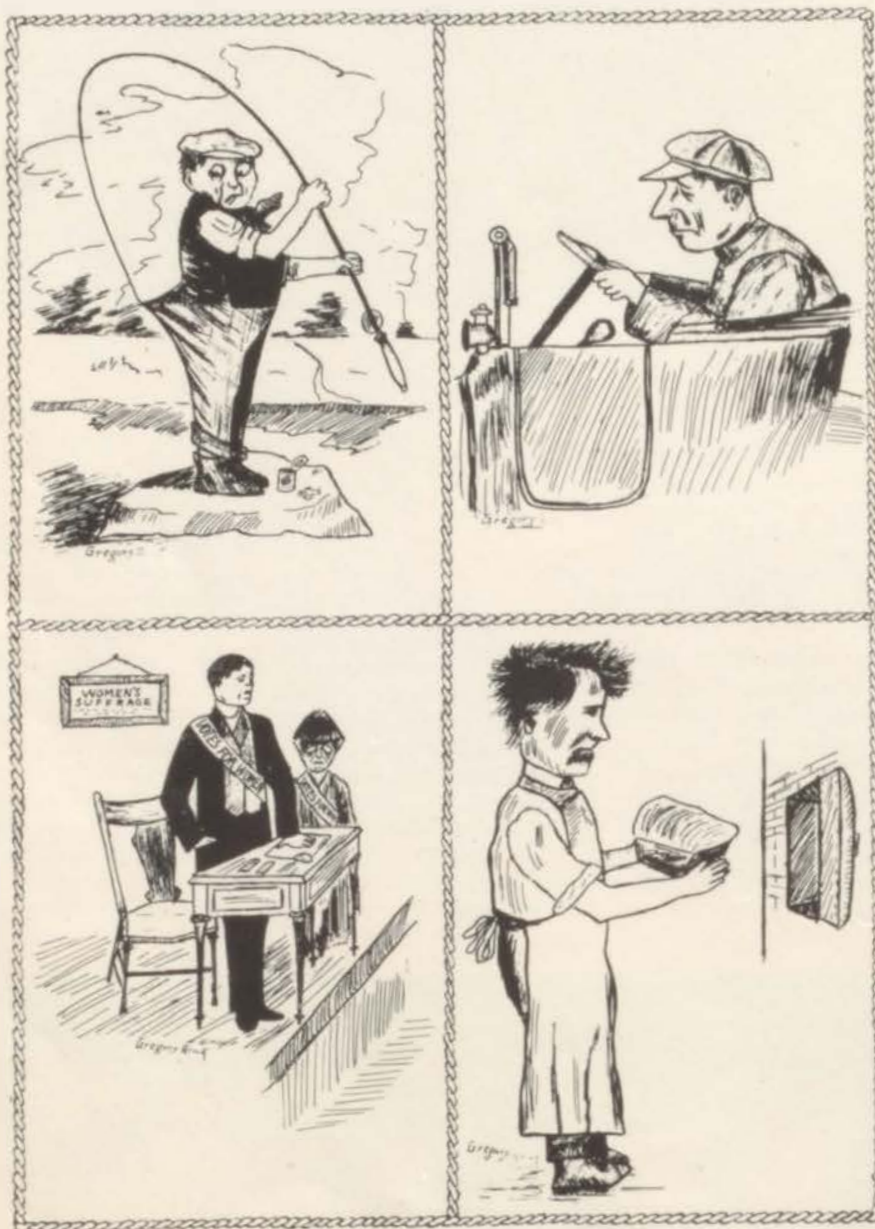
Forward—Alice Albaugh (Captain).  
 Forward—Lila Mater.  
 Guard—Martha Gauss.  
 Guard—Pearl Luscher.  
 Jumping Center—Harriet Hallon.  
 Running Center—Leona Katz.

### SENIOR-SOPHOMORE TEAM

Forward—Ethel Schroeder (Captain).  
 Forward—Beatrice Beckwith.  
 Guard—Aileen Grace.  
 Guard—Bessie Vogt (Manager).  
 Jumping Center—Vivian Comstock.  
 Running Center—Bertha Reyer.  
 Running Center—Kathrina Joy.

The girls' Basket-Ball teams have been quite successful this year. Good team work was shown in all three inter-class games which were played. In the first game The Senior-Soph. team won the banquet on a 10-5 score. The "spread" was given third preliminary, being the "rubber" between the two teams, was very exciting to the participants, because it had been agreed that the losers should banquet the victors. The Senior-Soph team won the banquet on a 10-5 score. The "spread" was given in the drawing room and all present had a delightful time. Many other social affairs were held in the drawing room after practise. These gatherings were enjoyed by all and will be cherished with other pleasant memories of our high school days. In behalf of the team the DIAL wishes to thank the coaches, Miss Gail Johnson and Mr. C. A. Spaulding.

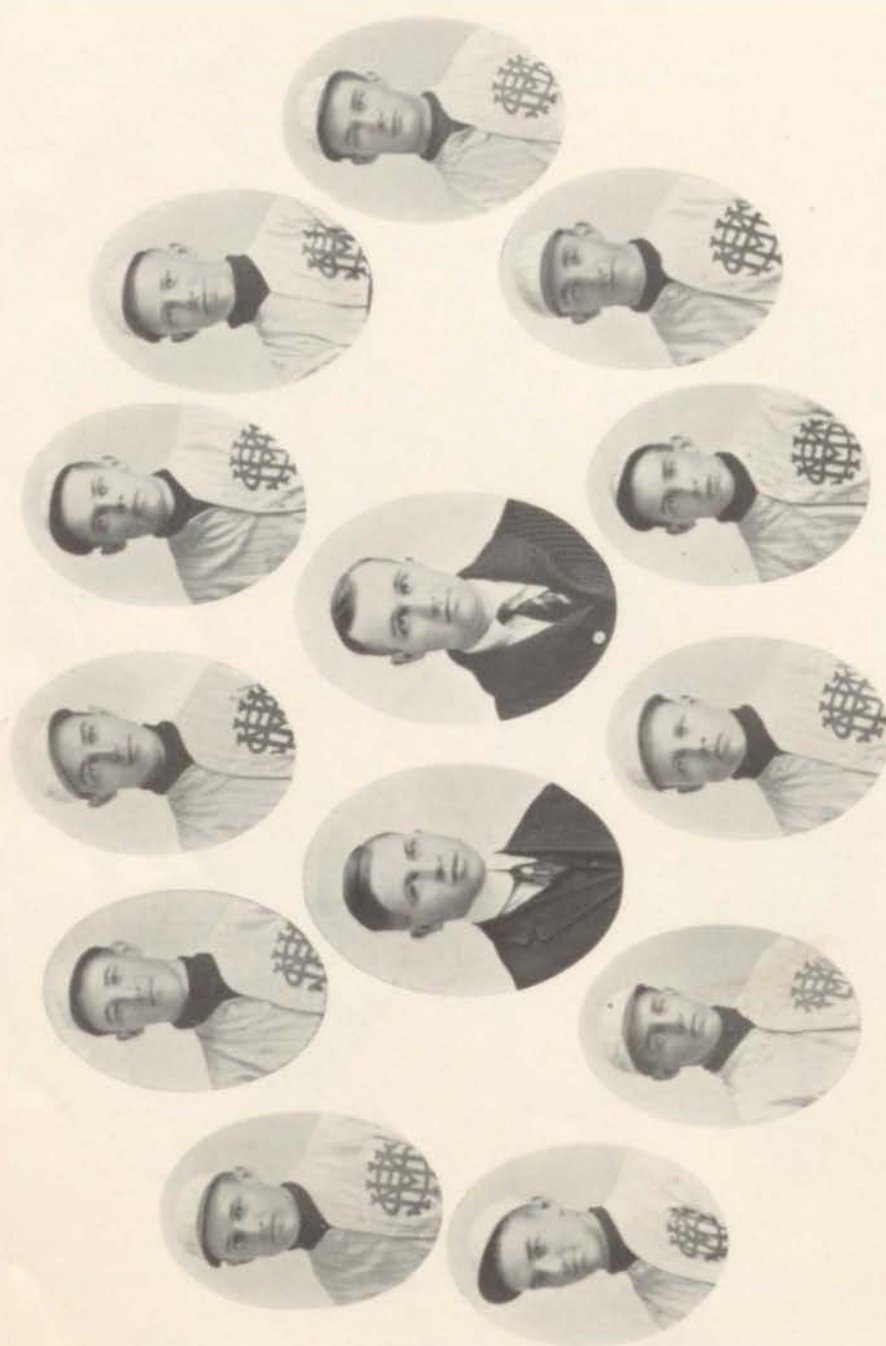




AURA SMITH  
BENJAMIN BENTLEY

CARLTON POWERS  
ORVILLE SCHROEDER





BASEBALL TEAM, 1914



## Baseball

The Marshall Baseball Team of 1914 was a success in every way. More enthusiasm was shown than ever before, the crowds turned out, money was made, and incidentally Marshall won eight out of eleven games, the best record for a Marshall team since 1907. The team, on account of their record, laid claim to the State Championship and issued a challenge to any high school team in the State, but it was not accepted. The team lined up as follows:

Pitcher—Lynn Vanzant (Captain).

Catcher—Paul Grace ("Spec").

First Base—George Faulkner.

Second Base—Max Reniger.

Shortstop—Benjamin Bentley ("Budge").

Third Base—Orville Schroeder ("Squee").

Left Field—Aura Smith ("Smittee").

Center Field—Clarence Baty.

R. Field—Kenneth Ronan ("Ronee").

Subs—Dale Hoeltzel, Harold Radford.

Coach—Clyde Jacoby.

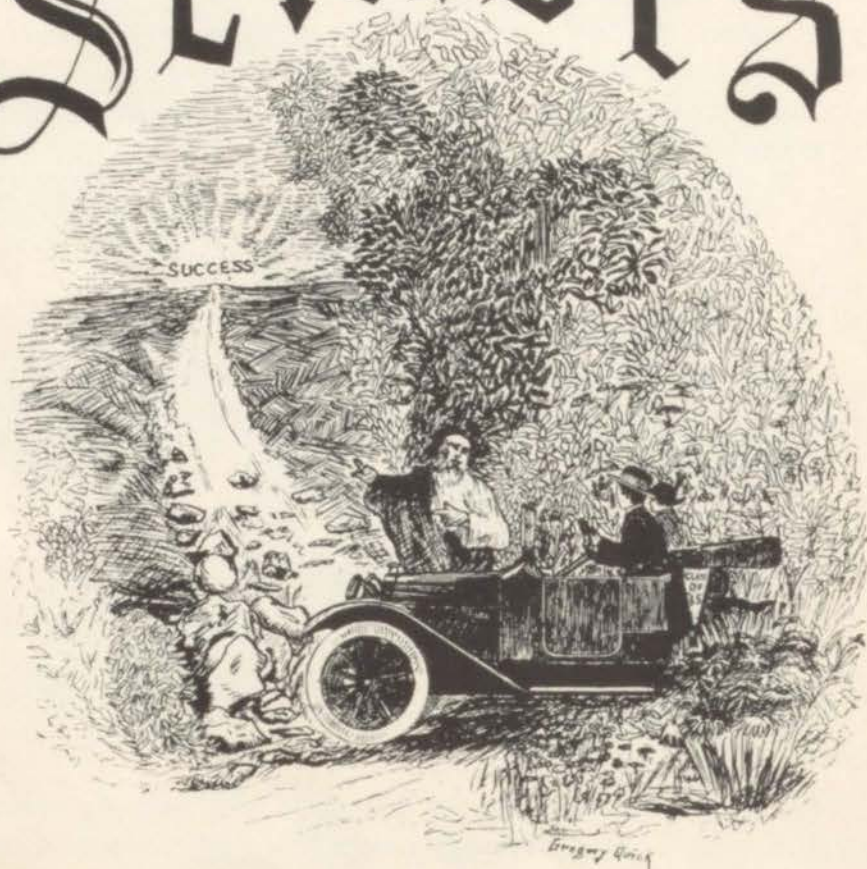
Student Manager—Henry Reniger.

The total number of points scored during the season were: Marshall, 101; opponents, 72.

The splendid showing of the Marshall team and the reputation which it won for clean, scrappy baseball during this season may be attributed to Mr. Jacoby's coaching.



# Seniors





# GRINDS

Fitz says "Grace" every morning at breakfast and wishes for "Joy."

"How I adore the 'Powers' of those strong arms," exclaimed the "Amber"-eyed damsel!

*Lewis Sackett.*—"Well, now, but listen, Alice!"

*Aura.*—"Have you seen the new aviation magazine?"

*Hill.*—"No. What's it called?"

*Aura.*—"The *Tanglefoot*."

*Hill.*—"Why *Tanglefoot*?"

*Aura.*—"Bonehead! Because it's fly paper."

## A BIT OF STANLEY LAMB'S SUCCESSFUL POETRY

" 'Tis midnight and the setting sun  
Is slowly rising in the West;  
The rapid rivers slowly run,  
The toad is on his downy nest;  
The pensive goat, the sportive cow  
Hilariously leap from bough to bough."

Dale says: "The deportment of the student varies as the square of the distance from the teacher's desk."

*First Freshman* (at football game).—"Look at them in all that mud. How will they ever get clean?"

*Knowing Soph.*—"Huh! What do you suppose they have the scrub team for?"

*Mr. Smith* (Physical Geography).—"Can you tell the belt north of the Equator?"

*Carlton.*—"Ca-Ca-Can-Can't-si-sir."

*Mr. Smith.*—"Correct."

They told me not to study  
Nor to sit up late to cram,  
They told me not to worry  
About passing my exam.

And so I didn't study  
Nor sit up late to cram.  
I didn't even worry  
And I flunked in my exam.

### THE DIFFERENCE DEFINED

"George," said the teacher in the botany class, "can you tell me the difference between annual and biennial plants?"

"Yes, sir," said George. "Annuals are plants that die once a year, and biennials are those that die twice a year."

### SHE BEAT HIM TO IT

"When you proposed to your lady love," asked Starr, "did you tell her you were unworthy of her?"

"No, I didn't," replied Belmont. "I was going to, but she told me first."

### AT AN EARLY AGE

"Can any boy tell when shingles came into use?" asked the teacher of the geography class.

"Yes, ma'am," replied an alert youth. "It was when I was six years old."

### FOR PALPITATING HEART

"Did you drink the water very hot an hour before each meal, as I prescribed?" Doctor Kelley asked.

"I tried hard," Max wailed, "but I had to stop. I drank for thirty-five minutes and it made me feel like a balloon."

*Talkative Barber* (looking for extras).—"Your hair's getting very thin on the top, sir."

*David* (annoyed).—"Good! I hate fat hair."

### NEAR FUTURE

"Dale," said his fond wife, Hazel, "I think our bank is going to fail."

"How foolish, Hazel. It's the strongest bank in Marshall."

"What makes you think so? They just returned my forty-dollar check marked, 'No funds'."

*Mr. Spaulding* (to Manual Training Class).—"Name three kinds of planes."

*Denville*.—"Block plane, jack plane and—"

*Mr. Spaulding*.—"Name one more, anyone."

*George*.—"Monoplane."

The evening that Mr. Spaulding called on Miss Somebody, she did not come down immediately, so he walked over and stood nervously looking into the red coals in the fireplace. Little Brother, thinking he wanted company, ventured in, but at sight of the professor, exclaimed, "Oh, Mr. Spaulding, you'd better not stand so near the fire. You're warping."

*Benjamin* (a baseball enthusiast).—"You must acknowledge, father, that it requires a great deal of skill to throw a ball from field to the catcher."

*Father*.—"Shucks! It doesn't require half as much skill as it does to drive a hog fifty feet."

### JOKES !!!

"*Father*," said little Mickey, "wasn't it Patrick Hiney that said, 'Let us have peace'?"

"Niver," said old Mickey. "Nobody be the name of Patrick iver said anything loike that."

*Edgar*.—"I didn't understand the question, or to a—make a variation—what do you mean?"

"I hear our sea captain friend, Captain Quick, is in hard luck. He married a girl and she ran away from him."

"Yes, he took her for a mate, but she was a skipper."

*Mr. Kelley* (Algebra).—"When you come into this class, I don't want you to stay in the hall."

*Her Father*.—"Mildred, I've noticed that that young man of yours stays pretty late nights. Hasn't your mother spoken to you about it?"

*Mildred*.—"Why, she did say that men were just the same as when she was young."

*Senior*.—"What makes that horrible smell of rubber come from the Aggie rooms?"

*Junior*.—"Oh, that's just some Sophomore holding a Freshman's neck on the radiator."

*Mr. Mater*.—"Why is it, Vada, that you always insist on saying Grace at breakfast?"

*Vada*.—"Why, I want to get used to the name."





*Kenneth* (upon nearing street light).—"Well, Phoebe, here's the last chance to get your hands warm."

*Phoebe*.—"I never take chances."

*Kenneth*.—"We should worry. Look at the chaperones."

When the doorbell rang, Orville quickly arose. "I must go," he announced. "It is time, I suppose." "Oh don't," cried Vera, "oh stay, I implore. For a ring on the hand is worth two at the door."

### COMPOSITION IN ENGLISH

A sleeper is one who sleeps. A sleeper is that in which the sleeper sleeps. A sleeper is that on which the sleeper carries the sleeper while the sleeper runs. Therefore, while the sleeper sleeps in the sleeper, the sleeper carries the sleeper over the sleeper under the sleeper until the sleeper which carries the sleeper jumps off the sleeper and wakes the sleeper by striking the sleeper under the sleeper and there is no longer any sleeper sleeping in the sleeper on the sleeper.

It doesn't make any difference how watchful and vigilant a girl is, if a fellow kisses her, it is ten to one he will do it right under her nose.

*Mr. Smith*.—"Laverne, what is work?"

*Curtis*.—"Everything is work."

*Smith*.—"What! Everything is work? Then I take it you would have the class believe that this desk is work."

*Curtis* (yawning).—"Yes, sir, woodwork."

*Marian*.—"Isn't it shocking?"

*Inez* (inquiringly).—"What?"

*Marian* (sarcastically).—"Electricity."

*Henry*.—"Generally speaking, women are—"

*Kenneth*.—"Yes, they are."

*Henry*.—"What?"

*Kenneth*.—"Generally speaking."

"He is the most tender-hearted man I ever saw."

"Kind to animals—"

"I should say so. Why, when he found the family cat insisted on sleeping in the coal bin, he immediately ordered a ton of soft coal."

*Drug Clerk*.—"Did you kill any moths with the moth balls I gave you?"

*Reiniger*.—"No, I tried for five hours, but I couldn't hit a one."

*Miss Hoyteth*.—"Chester, look under the table and roll your eye."

*Miss Bishop*.—"Yes, Chester, roll your eyes under the table."



*Mr. Kelley.*—"There's been something trembling on my lips for months and months."

*Miss ———.*—"So I've noticed. Why don't you shave it off?"

#### MORE ENGLISH COMPOSITION

The lightning bug is a beautiful bird,  
But hasn't any mind.  
He dashes through this world of ours  
With his headlight on behind.

*Rachael.*—"When Doc proposed to me he acted like a fish out of water."

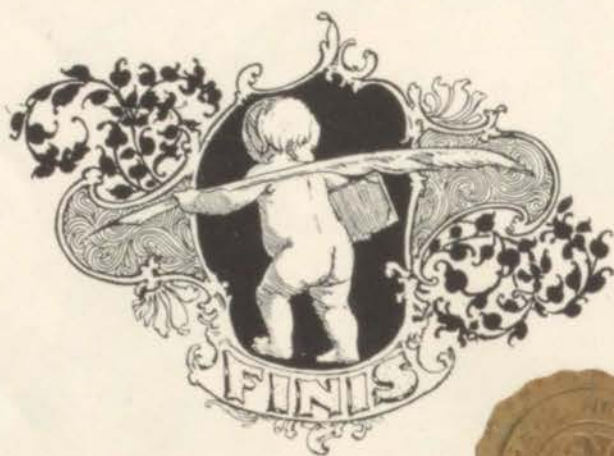
*Amber.*—"Certainly. He knew he was caught."

The boat began to roll and pitch,  
The judge clung to the rail.  
He didn't like the bounding waves,  
His solemn face grew pale.

But happily a clever thought  
Came to his legal brain,  
He overruled the motion  
And felt all right again.



“A Howling Success”



# ADVERTISEMENTS





## **TWO-IN-ONE**

### **Gauss Combined Treatment**

The ideal remedy for Catarrh, Bronchitis, Asthma and other affections of the respiratory organs. It attacks the disease from all points, quickly overcomes the annoying symptoms, and will prove a pleasant surprise to all who have unsuccessfully used sprays, atomizers and other preparations.

For sale by all druggists.

# Buy Clothes

OF QUALITY GUARANTEED

---

*High Grade but  
not High Priced*

---

**Ethan Allen**

Marshall, - - - Michigan

---

For the Best Ice Cream in Town Go  
to the

**Marshall  
Confectionary**

---

We use the purest fruits and syrups.

Our Home-Made Candies are the best you  
ever tasted.

They are always fresh, ready made, and al-  
ways satisfying.

We make special orders for parties, etc. Any  
kind of Ice Cream or Ices

---

**The Marshall Confectionery Co.**



---

*For Shoes  
of Quality*

Go to

**B. A. Kelleher**

"The Feet Fitter"

---

Marshall, - - - Michigan

THE  
**Walk-Over Shoes**

---

THE "WALK-OVER" HABIT

Not a habit to swear off, but a habit to swear by.

Men and women who have the Walk-Over habit know what it means to have shoes that are elegant in style, comfortable on the feet and long in wear.

Acquire the "Walk-Over" habit—it's a habit that you'll never swear off.

Let us show them to you.

---

**S. E. Cronin Co.**

Marshall - - Michigan

---

**COLEMAN'S**  
**Clothing & Furnishings**

---

*"The Store  
That  
Treats You  
Squarely"*

---

MARSHALL, - - MICHIGAN

**M. S. O'Keefe & Co.**

**Booksellers and Stationers**

**Marshall, Michigan**

**Office Supplies      Fine Stationery**

**Wall Paper              and Engraving**

**Shade Goods          Weddings, Etc.**



**We extend to the Class of '15 of Marshall  
High School our congratulations**



**The Model Book Store**

---

**This Ad is Read by 500 People  
and Cost \$5**

---

**The Same Ad in the**

**Evening Chronicle**

**Costs \$1 and is Read by  
5,000 People**

---

**There is Only One Kind of  
Advertising**

**"NEWSPAPER"**

*After You Finish with School—*

Then you go to work—soon you get a raise—next you get married—by and by you build a home. When you get to this home stage, remember the old town is the home of



## Marshall Furnace Company AND Wolverine Furnaces

Wolverine Furnaces burn any fuel—are easy to feed, clean and manage—and because of their immense radiating power, save fuel over any other heating system.

They are put in on a make-good basis and guaranteed for five years.

“WE HEAT THE HARD TO HEAT”



---

## Bowling

One hour at bowling, the easy plan,  
To make the world a healthy man.

---

## THE ELK BOWLING ALLEYS

Full Line of

SAMOSET, LOWNEY'S, SCHRAFFT'S AND DOLLY VARDEN CANDIES  
FINE HAVANA AND DOMESTIC CIGARS

---

## BURTON & MUCK

MEET US AT “THE ELK”

COMPLIMENTS OF

The Brooks  
Rupture  
Appliance Co.

MARSHALL, MICHIGAN



THE  
"Toggery" Shop

Leaders in

*Young Men's  
Clothing  
and  
Furnishings*

---

O. L. LINN & SON

Tell Your Friends About Us

We are sparing neither effort nor expense to give the people in Marshall and vicinity the kind of jewelry store they want, and we welcome suggestions from our friends and customers as to how our service can be improved. If you have found our store an agreeable place in which to trade, please tell your friends. They will appreciate it and so will we

---

C. H. Ostrander & Co.

Watchmakers  
Jewelers and Engravers

114 W. State Street

Marshall, Mich.

---

PYRAMID  
PILE  
TREATMENT

Free Samples on Request

---

50c and \$1.00 per Box

---

FOR SALE AT ALL DRUG STORES

FOR ALL STOMACH  
TROUBLES

Take

**STUART'S**  
**Dyspepsia**  
**Tablets**

---

For Sale at All Drug Stores

# THE SIMPLE LIFE

In the long run, is the happiest one. The struggle to keep up appearances, to vie with neighbors, to hold a position, is oftentimes a pathetic and useless one.

Live simply and save your money through a Commercial Savings Bank savings account. This is our prescription for genuine success.

---

## COMMERCIAL SAVINGS BANK

MARSHALL

MICHIGAN

---

**O. J. RENIGER**

GENERAL CONTRACTOR

AND BUILDER

**BRADSHAW'S**

DRUGS AND  
SUNDRIES

Wall Decorations and  
Painters' Supplies

---

Marshall

Michigan

Marshall

Michigan

1840

1915

OLDEST BANK IN MICHIGAN

# The First National Bank

MARSHALL, MICHIGAN

Capital, \$100,000.00

Surplus, \$25,000.00

Resources over \$1,000,000.00

We solicit your account

---

**Francis S. Deuel**

Clothcraft  
Clothes

MARSHALL, - - MICHIGAN

**H. G. Kelser**

Quality

Furniture  
and Rugs

LICENSED EMBALMER

Prompt Service  
Day and Night

MARSHALL, - - MICHIGAN

# G. E. Lamb & Son

Dealers in

*Lumber*

*and*

*Coal*

---

Marshall - - Michigan

---

This is just a little reminder

That I have anything  
you may want in the

## Hardware Line

I enjoy your visits at  
my store and am al-  
ways pleased to show  
you Good Hardware.

---

### GEO. W. LEEDLE

Red Tag Hardware Store

Both Phones 35

Marshall, Mich.

## I Say, When You Want

GOOD CLOTHES

GOOD STYLE

GOOD FIT

GOOD CLEANING

GOOD PRESSING

GOOD REPAIRING

Anything Good in Tailoring, come and  
see me.

---

### A. E. ELSIE, Tailor

Bell Phone 76

Citizens 2133

Marshall - - Michigan

---

## H. A. Hulett

*Jeweler*

---

We Specialize in Watches  
and Diamonds



THE "DOBBINS TUBULAR"



"Sells Because It Excels"

## The Original Furnace of Marshall

Many of the finest homes in our beautiful  
city are warmed by

### "The Dobbins"

We deliver our furnace to your residence,  
have an expert mechanic from our factory  
install it, and *you do not pay for it unless it is*

ENTIRELY SATISFACTORY.

---

Call at our factory on South Kalamazoo Avenue.

---

**SIMONS-LEEDLE FURNACE COMPANY**  
Marshall, Michigan

---

**Maurice Snow Gibbs, M. D.**

Both Phones 237

"ANSWERING CALLS QUICKLY A HABIT"

**J. M. Hatch & Son**  
LAWYERS

Marshall - - Michigan

---

**James W. Mackey**  
LAWYER

Marshall - - Michigan

---

**Miller & Miller**  
INSURANCE AND LAW  
104 East State St.

Marshall - - Michigan

---

**Marshall News-Statesman**

Marshall's Daily Newspaper

D. W. Knickerbocker, Editor  
H. D. Lansing, Business Manager

---

**THE PHOTOGRAPHIC WORK**

In this Book was  
Done by

**J. J. Stephenson**

---

**Garrick Cafe**

**James D. Grace**

Agent  
Equitable Life Assurance Society  
of the United States

---

**F. G. Powers**  
DENTIST

**Winsor & Robinson**  
ATTORNEYS AT LAW  
First National Bank Building

Marshall - - Michigan

---

**Gas Ranges, Gas Burners  
and Mantles, Gas Irons**

and the New Kinetic Gas Bowls  
for Residence Lighting

**SEE THE GAS COMPANY**

---

**Marshall Marble & Granite  
Works**

Mumaw Brothers

MONUMENTS OF QUALITY

---

**W. E. Boyd**  
THE NEW REGAL  
\$650.00



## It is Quality That Counts—

*The difference between success and failure is quality.*

Spring Suits and Top Coats made here have supreme quality in cutting, designing, tailoring and fabric. Come in and let us prove that we can give you the most for your money.

Prices reasonable—your choice of 500 fabrics.

Our Cleaning and Pressing Department is ready to give you immediate service. All work receives our careful attention, such as cleaning, pressing, altering, dry cleaning, etc.

# T. K. SCHRAM

High-Class Tailor

Marshall

Michigan

## H. L. Cronin

THE  
"HURRY UP" METHOD  
GROCER

## Round Oak Stoves

ALL KINDS OF HARDWARE, GLASS  
PAINTS, OIL, CREAM SEPA-  
RATORS, ETC.

We are always glad of the opportunity  
of showing goods and quoting prices.

Sayre & Brandis, EAST END  
HARDWARE



We Make a Specialty  
of

## FINE PRINTING AND ENGRAVING

for

SCHOOL AND COLLEGE  
ANNUALS

First-Class Work at Moderate Prices

## Gage Printing Co., Ltd.

Battle Creek, Mich.

