



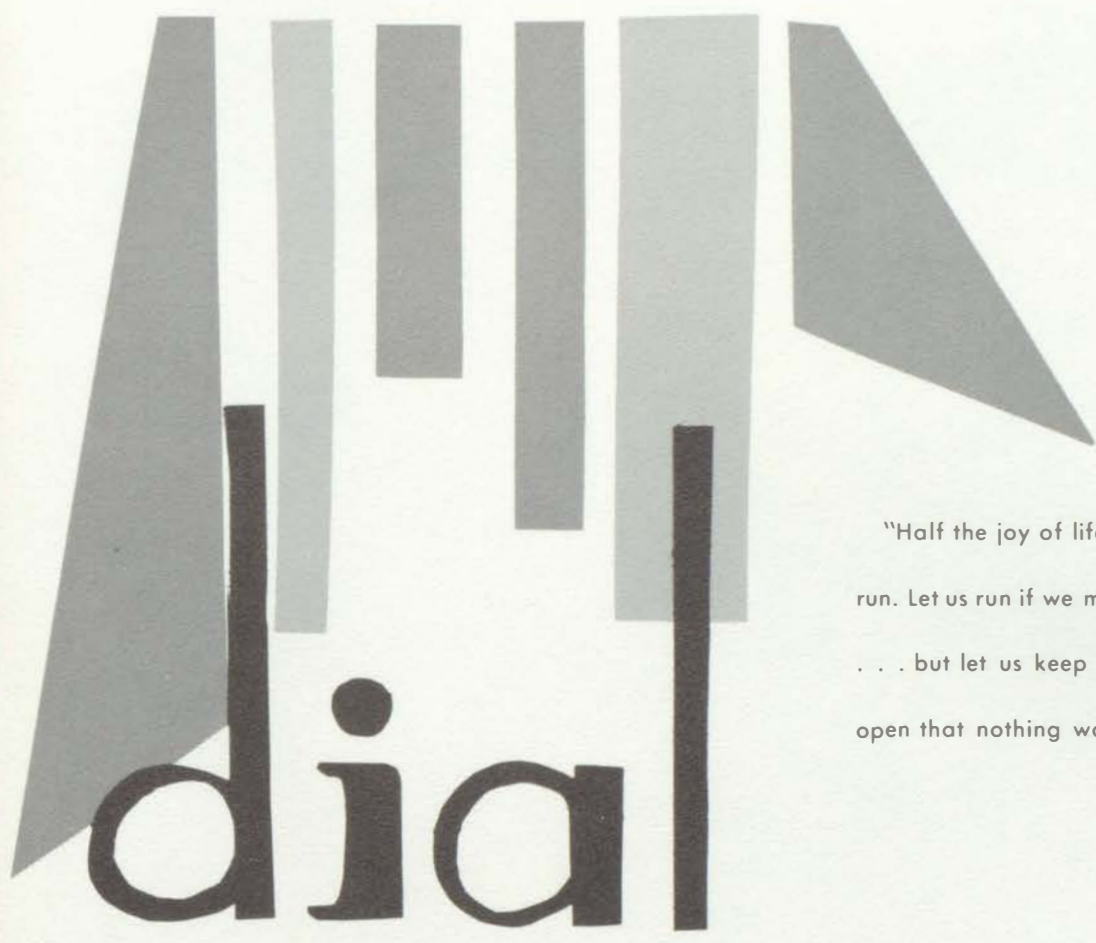
didid





TABLE OF CONTENTS

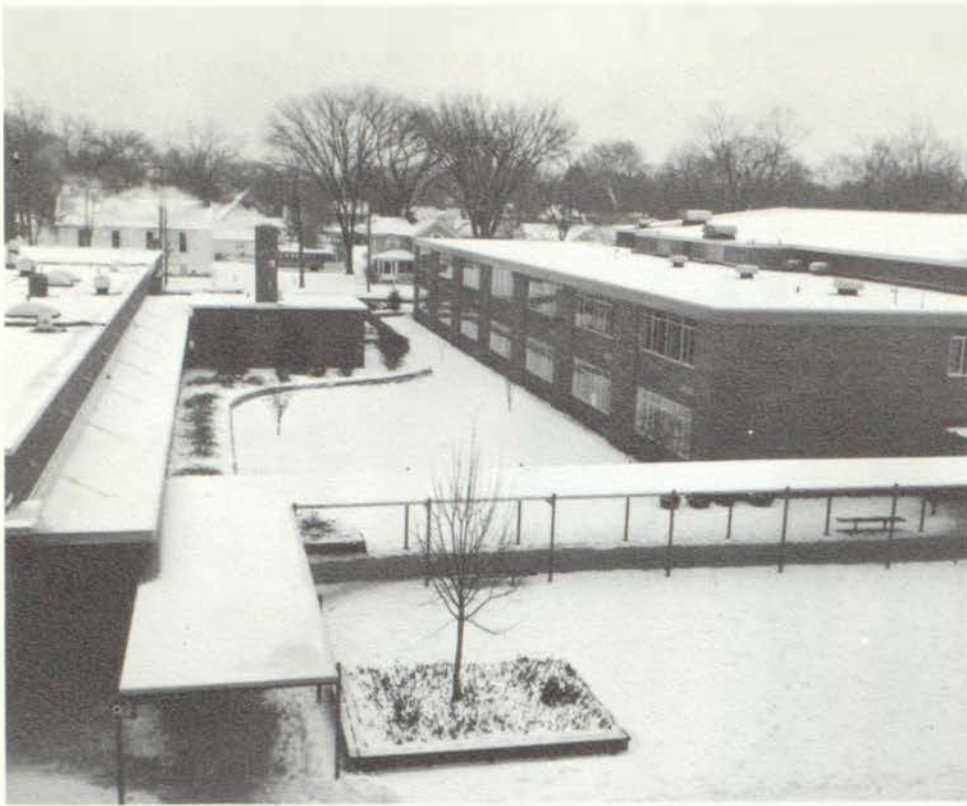
Administration	12
Organizations.	26
Entertainment	44
Athletics	60
Students	80
Advertisements	172



"Half the joy of life is in little things taken on the run. Let us run if we must . . . even the sands do that . . . but let us keep our hearts young and our eyes open that nothing worth our while shall escape us."

Victor Chubuliez

**marshall high school
marshall, michigan
volume 48**





Begin; to begin is half the work.
Ausonius-Epigrams



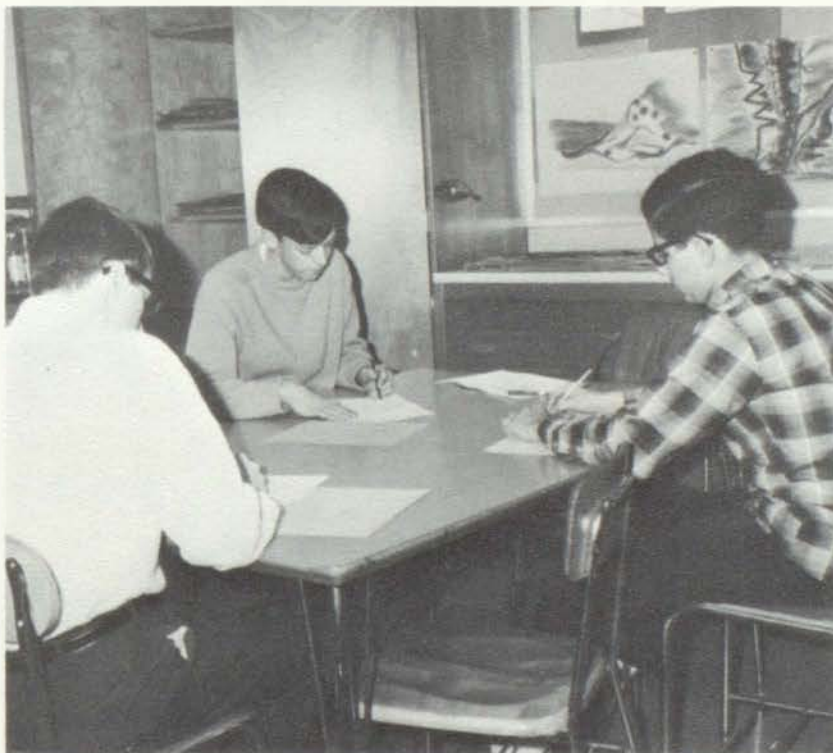
"Nothing great was ever achieved



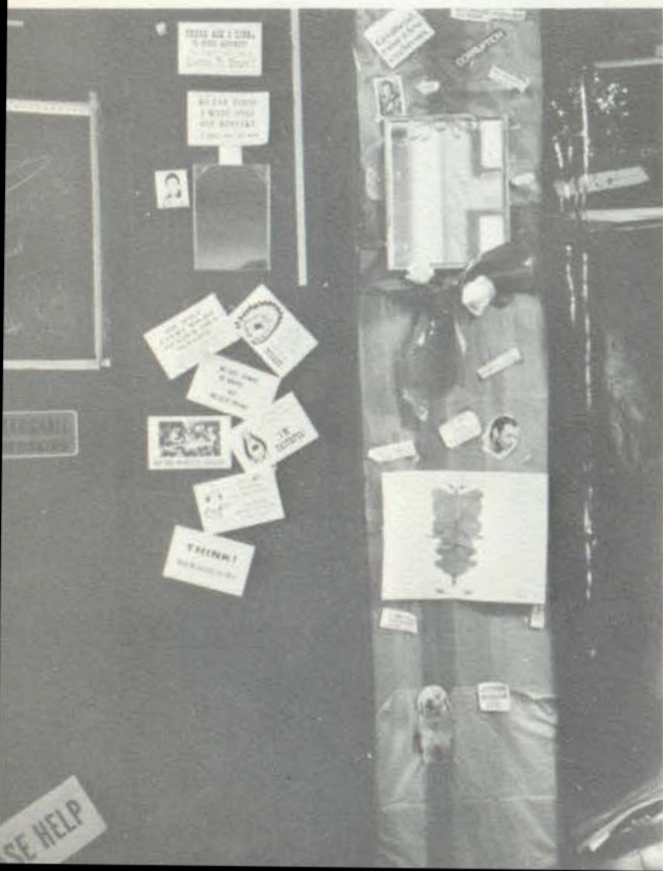
without enthusiasm."
Essay on Circles, Emerson



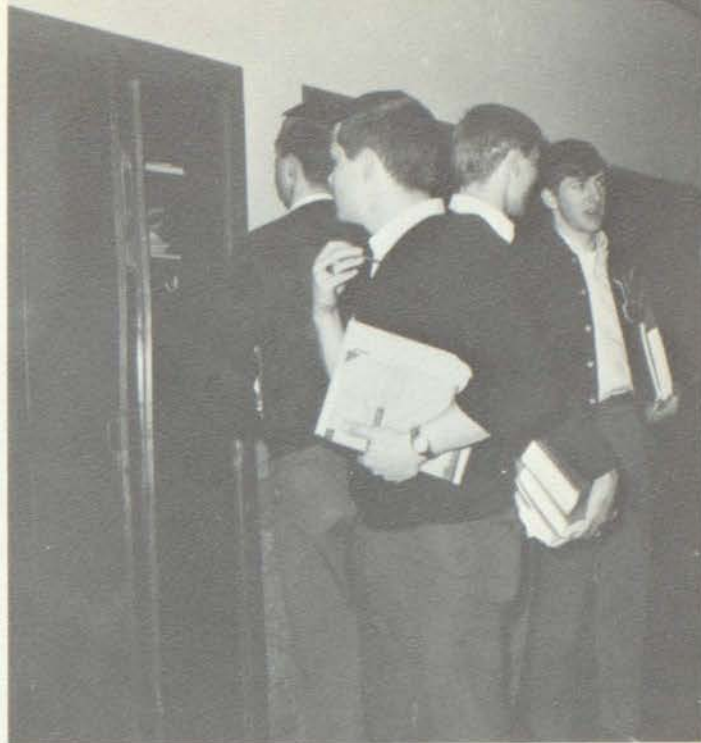
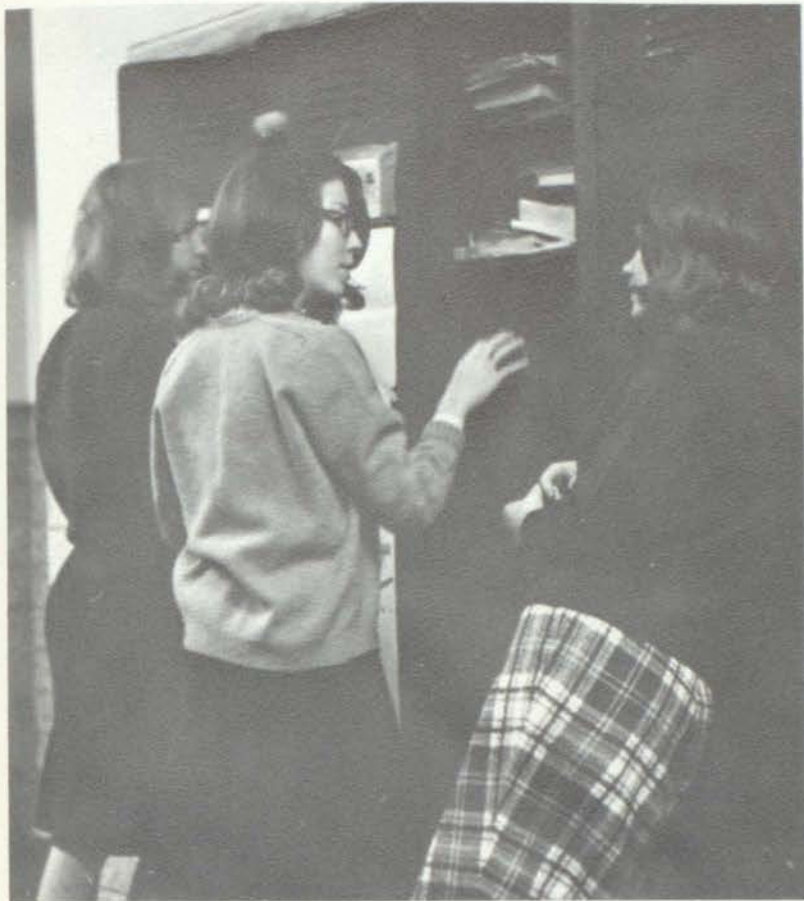
"Double, double



toil and trouble . . ."
Macbeth, William Shakespeare



"Magnificent spectacle



of human happiness."
America, Sydney Smith



We Begin In



What We End.
Shelley, *Fragments*



FACULTY AND ADMINISTRATION

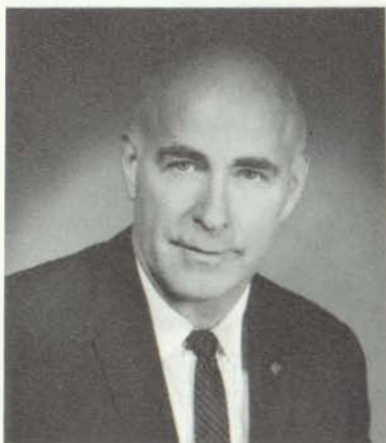
The student body of MHS has been fortunate in having an excellent faculty and administration. Their guidance and personal interest in each student as an individual has greatly encouraged the students' response to their efforts. The teachers have been more than willing to spend extra time with the students in helping solve their problems, and to find time and energy to sponsor clubs. Because of our fine faculty and administration, many memories will long be treasured by the students.





This years' members of the Board of Education were Mrs. George Kibbie, president; Mr. George Brown, Jr., trustee; Mr. Morris Stulberg, trustee; Mr. Joseph Schroeder, vice-president; Mr. David Foster, treasurer; Mrs. Ruby Henry, trustee; Mrs. John Twist, secretary.

ADMINISTRATION



BRUCE A. GRAY
Superintendent of Schools



HENRY W. CUNNINGHAM
Administrative Assistant
To The Superintendent
Curriculum Director



WILLIAM M. CRUMRINE
High School Principal



IVAN K. FLESER
Assistant Principal
Guidance Counselor



JOSEPH R. COOPER
Principal, Madison Junior High
Athletic Director

COUNSELORS

(MRS.) REBECCA R. NEUMAN
Guidance Counselor
Effective Living
Co-Sponsor, Senior Class
A.B., Murray State College
(Kentucky)
M.A., Michigan State University



(MRS.) ELIZABETH B. LEWIS
Guidance Counselor, Madison
Junior High
B.M., University of Michigan
M.A., Michigan State University

EARL E. AVERY
Guidance Counselor
Co-Sponsor, Junior Class
B.A., Western Michigan University
M.A., Western Michigan
University



(MRS.) JENNET L. STORR
Guidance Counselor
Co-Sponsor, Junior Class
English
A.B., Olivet College

SECRETARIES



(MRS.) BETTY MITCHELL
Office Coordinator
Secretary to Superintendent



(MRS.) HAZEL RUSHFORD
Secretary, Superintendent's Office



(MRS.) VERA QUICK
Secretary, Superintendent's Office



(MRS.) DORIS TAYLOR
Secretary to the Principal



(MRS.) MARGE AALBREGTSE
Secretary, Madison Junior High
Principal's Office



(MRS.) MARILYN VANDER GEEST
Secretary, Vocational Department

FACULTY



(MRS.) GEORGIA ALDRICH
Math
B.S., M.A., Central Michigan University



ERNIE BALL
Physical Education
Asst. J.V. Football Coach
Eighth grade Basketball Coach
B.S., Central Michigan University



FLOYD D. BENEKER
Agricultural Education
FFA Advisor
Young Farmer Program
B.S., M.S., University of Wisconsin



ELEANOR F. BULLOCK
Junior-Senior High Librarian
B.S., Eastern Michigan University



KATHERINE L. BURLINGAME
Speech
Dramatics
English
Director of Class Plays
B.A., University of Michigan



HARRY CAIRNS
Chemistry
Physics
Advanced Science
A.B., B.S., M.A., Western Michigan University



STANLEY J. CARLYON
Wood Shop
Sponsor, Industrial Arts Club
B.S., M.A., Western Michigan University



CLYTHUS H. CARR
Director of Safety Education
Director, Audio-Visual Education
A.B., Western Michigan University
M.A., University of Michigan



FRED T. CHANEY
Accounting
Office Machines
B.S., Northern Michigan University
M.A., University of Michigan



(MRS.) BERDINE M. CLUTE
Geography
B.S., Western Michigan University



(MRS.) ELEANOR S. CREED
Reading
English
B.S., M.A., West Virginia University



AARON W. DAVIS
Vocational Agriculture
General Science
Biology
B.S., Michigan State University



RAYMOND O. DAVIS
Drafting
Sponsor, Industrial Arts Club
Sponsor, Sophomore Class



(MRS.) ARDATH L. DEMING
Chair
B.M., Michigan State University



RUTH ANN ERSKINE
Advanced Math
Algebra II
A.B., Michigan State University
M.A., University of Michigan



JERRY FLACK
American History
Sponsor, Art Club
B.A., Michigan State University



(MRS.) SHIRLEY GOODWIN
Librarian



(MRS.) LeMAYNE GRAY
French 7
A.B., Kalamazoo College



(MRS.) CLAUDIA GRUNDMAN
English
Sponsor, Student Council
B.A., Albion College



JANET K. HALL
English
A.B., Albion College



(MRS.) DOROTHEE HANSEN
Homemaking
Sponsor, FHA
Sponsor, Freshman Class
B.S., Iowa State University



ROBERT HENDERSON
World History
Government
International Relations
Sponsor, Political Club
B.A., Michigan State University



MORRIS HUNT
Algebra I
General Mathematics
B.A., Michigan State University



JOHN C. ICKES
English
B.A., Alma College
M.A., Michigan State University



(MRS.) BESSIE E. IVEY
Special Education
B.S., Western Michigan University



RICHARD D. KELLEY
Biology
B.S., M.A., Western Michigan University



CAROL LEWIS
Physical Education
Sponsor, GAA
B.A., Albion College



JUDITH LUDWIG
General Mathematics
Algebra I
Sponsor, Usher Club
A.B., University of Michigan



KENNETH E. MACHATA
 Algebra I and II
 Geometry
 B.S., M.A., Western Michigan University



WILLIAM G. MACK
 Mathematics
 Coach, Track and Cross Country
 B.S., M.A., Michigan State University



BRUCE MARTENS
 Physical Education
 Assistant Varsity Football Coach
 B.A., Albion College



(MRS.) DEBORAH MARTENS
 Spanish
 Sponsor, Spanish Club
 Sponsor, Cheerleaders
 B.A., Albion College



(MRS.) BARBARA MAURER
 Reading
 B.S., Western Michigan University



(MRS.) GAIL MC DOUGALL
 Homemaking
 Sponsor, FHA
 B.S., Cornell University



FRANCES MERRITT
English
Sponsor, National Honor Society
A.B., Albion College
M.A., University of Michigan



(MRS.) ESTHER MOSS
General Mathematics
Geometry
B.A., Western Michigan University



(MRS.) JEAN MUMAW
Science
B.S., Michigan State University



RICHARD MURPHY
Metal Shop
Sponsor, Industrial Arts Club
B.A., M.A., Western Michigan University



JEANNE NORRIS
French
Sponsor, French Club
A.B., Central Michigan University



PAUL PETERSON
Mathematics
Science
Assistant Freshman Football Coach
Freshman Basketball Coach
B.S., Central Michigan University



PAUL A. RAUTH
Co-op
Metal Shop
Electrical Science
B.S., Western Michigan University



(MRS.) BETTY J. REYER
Librarian
A.B., University of Michigan
M.A., Western Michigan University



(MRS.) ELIZABETH THINEHART
Shorthand
Typing
Sponsor, Secretarial Club
B.A., Michigan State University



CAROLYN M. RIEGER
Typing
General Business
Sponsor, Volunteens
B.S., M.A., Western Michigan University



(MRS.) ILLA RIVERS
Rivers
B.S., Western Michigan University



BRUCE A. ROE
General Science
Chemistry
B.A., Hope College



SHARON LEE ROGERS
Assistant Director, Senior High Orchestra
Junior High Orchestra
B.M., Western Michigan University



BARNEY ROY
 English
 Geography
 Sponsor, Student Council
 J.V. Football Coach
 A.B., Washburn University



DENNIS SHUFELT
 English
 Sponsor, Bible Club
 Sponsor, Freshman Class
 A.B., Union University



(MRS.) JANE SLATER
 English
 Speech I and II
 Forensics
 Beginning and Varsity Debate Coach
 A.B., Albion College



ROBERTA S. SMITH
 Physical Education
 Sponsor, Pep Club
 B.S., Northern Michigan University



W. WALLACE SPIEGEL
 English
 B.A., Morningside College
 M.A., University of Michigan



JOHN F. STROUGH
 Sponsor, Co-op Club
 B.A., M.A., Colorado State College



REGINA TITTA
 Typing I
 General Business
 B.S., Western Michigan University



JESSIE G. TRUESDELL
 American History
 B.S., Western Michigan University
 M.A., University of Michigan



(MRS.) JOYCE TWIST
 English
 A.B., Hope College



NICK TIMMER
 Geography
 American History
 B.A., M.A., Western Michigan University



DON VANDER GEEST
 American History
 Wood Shop
 Varsity Basketball Coach
 Golf Coach
 B.S., M.A., Western Michigan University



ROSS VAN NESS
 Band
 Orchestra
 B.M., Western Michigan University
 M.M., University of Michigan



(MRS.) BETTY WASHBURN
 Art
 English
 B.A., College of Wooster



BILL WASHBURN
 Civics
 Math
 Varsity Football Coach
 Seventh Grade Basketball Coach
 B.A., College of Wooster



GEORGIA M. WILSON
Latin I and II
Sponsor, Latin Club
A.B., Albion College



PHILIP M. WUORI
American Government
International Relations
Sponsor, Political Club
Sponsor, Senior Class
B.A., University of Michigan
M.A., Western Michigan University



BERT O'DELL
Freshman Football Coach
J.V. Basketball Coach
Tennis Coach
B.S., Western Michigan University

(MRS.) WILLO COOPER
Reading (2nd. Semester)
B.S., Western Michigan University

BRIAN HAEFELY
Journalism (2nd Semester)
English
A.B., Central Michigan University

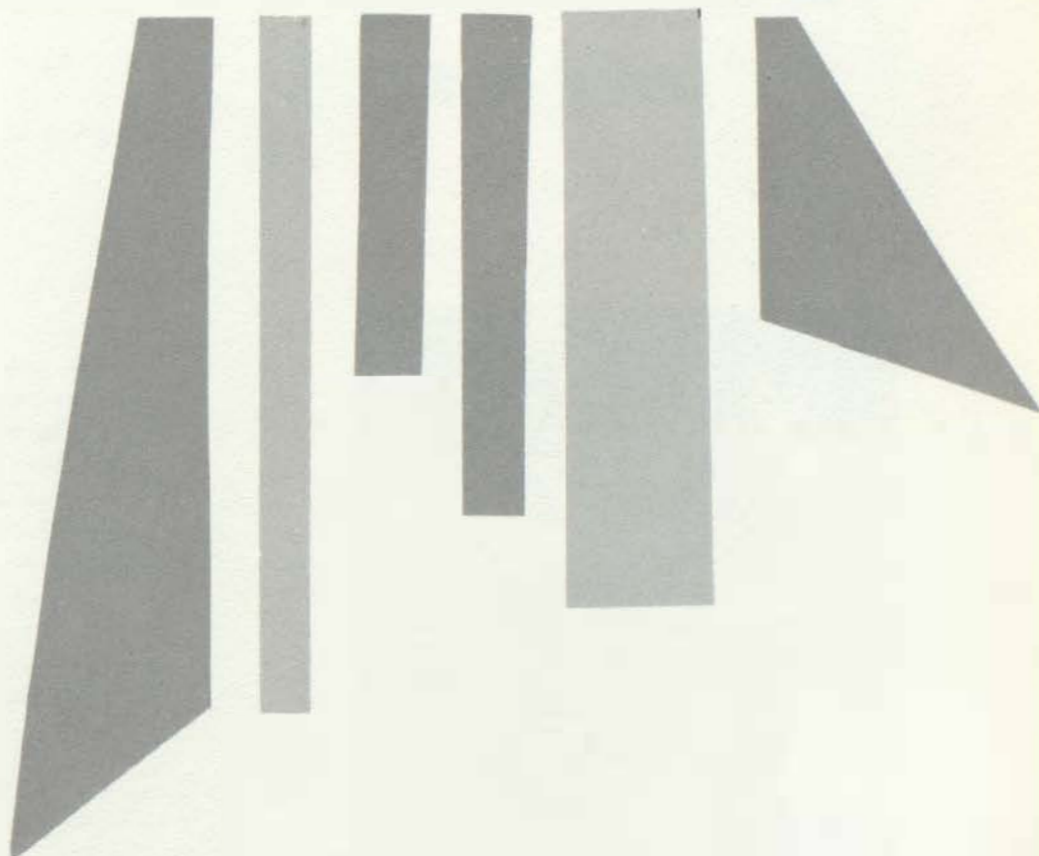
JACKIE KROENCKE
Art (2nd Semester)
Sponsor, Art Club
B.S., Western Michigan University





ORGANIZATIONS

Organizations are a vital part of one's high school life. These extra-curricular activities instill enthusiasm and give the students a chance to show leadership and gain deserved recognition. By participating in these clubs, they can broaden their knowledge in various areas and feel more a part of the high school.





USHER CLUB



Head Usher, Pot Wilson, and Assistant Head Usher, Judy Noreyko.

Every spring several freshmen, sophomores, and juniors are chosen by the teaching staff for the following year's membership of the Usher Club. Basic to their selection are the qualities; reliability, personality, appearance, and character. The girls usher for school concerts and plays, Civic Theatre productions, and other civic functions. The girls receive one point for each time they usher. In order to remain eligible for membership, they must earn five points per year.



Front row, l. to r.; Phoebe Reese, Linda Lewis, Kathy Schroeder, Linda Nail, Charlotte Whitney, Jeanette Elyea; Back row l. to r.;

Mike Lowder, John Twist, John Begg, Jerry Maisner, Alan Stulberg, and Miss Merritt, the club sponsor.

NATIONAL HONOR SOCIETY

One of the highest honors a student can receive while in high school is that of being chosen for the National Honor Society. Selection of these students is based on scholarship: juniors with a B+ and seniors with a B average. Character, service, and leadership are also considered by the faculty. New members are initiated by the present society at an impressive assembly. The society's purpose is to develop an individual fully in each area of his high school life.



From left to right, Political Club officers: John Begg, Republican president; John Twist, president; Mr. Wuori, advisor; Charlotte Whitney, secretary-treasurer; Phil McKelvey, vice-president; Jeff Albaugh, Democratic chairman.

POLITICAL CLUB

Political Club began in 1964 and many students have played important parts in this organization. During the school year the club organizes and sponsors interesting activities. This year Scott Romney, County Clerk Marcus Gray, and others provided fine lectures for the club. Each year members attend the Model U.N., go to various conventions, and visit the State Capitol.





DEBATE

Learning how to do through research, to analyze a problem, and to organize and present material in an interesting and persuasive way are just some of the values of debate. Participants in this activity gain the added benefits of speech training, poise, and the two most important assets of all: discovering two sides to important issues and gaining the ability to think accurately while speaking.

In order to make use of these skills, Marshall is involved in three leagues: the Western Michigan Novice and Yearling League, the Michigan High School Forensic League, and our own Twin Valley League. All debaters are given the opportunity to meet opponents from other schools.

Forensics follow debate, taking place during the second semester. Growing interest in humorous and dramatic reading, extempore speaking, declamation, original oratory, radio commentary, and multiple reading has resulted in a rapidly growing program.

PUBLICATIONS

This year, the Publication staff handled the production of more than 150 items, such as report card forms, programs and tickets for plays, concert, and athletic events, and the school newspaper. This task was aided by the use of the Multilith printing facilities.



Publications staff members were (left to right): Jim Stout, Lorry Taylor, David Walters, and Bob Hookwoy. Missing was Gory Proet.

JOURNALISM DEPARTMENT



The Red Squire staff pauses while Lorry Moisner, photographer, takes a group shot.

As in the past, the journalism department was divided into three staffs: *Dial*, *Red Squire*, and *Publications*. The 22 members of the *Dial* and *Red Squire* staffs, as seniors, took either one or two hours of *Journalism*, and had a semester of journalistic training during the junior year.

Staff members of the *Dial* worked for approximately eleven months editing a book to record the events of the past year, while the *Red Squires*, featuring school news, were published by the bi-weekly newspaper staff.

R
E
D
S
Q
U
I
R
E





D
I
A
L
S
T
A
F
F

Who has your attention, Dial staff?





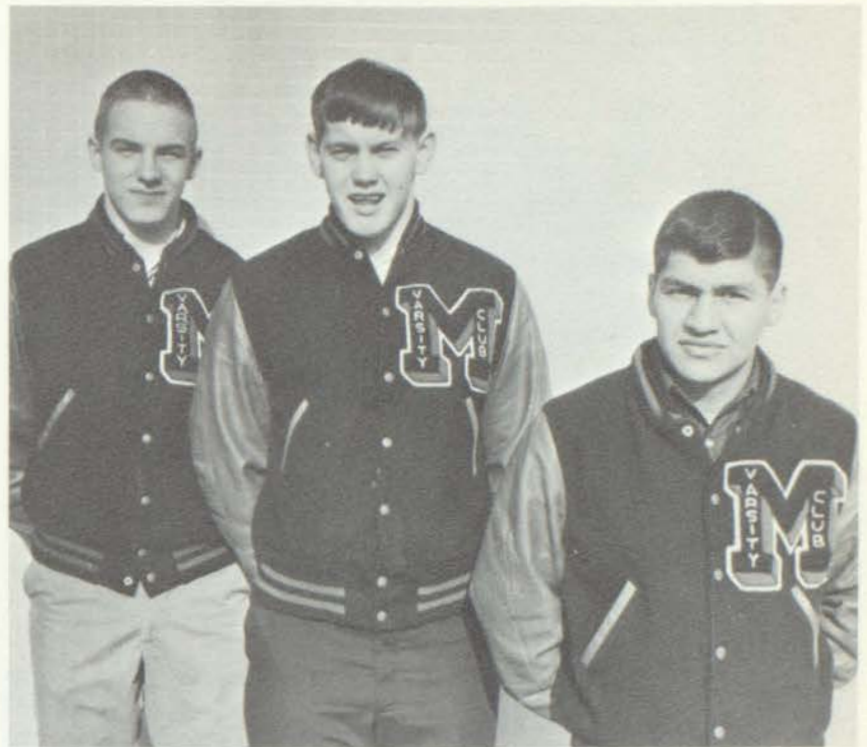
B I B L E C L U B

Marshall High School has a fine, active Bible Club. Many students of different faiths are welcome to the weekly meetings. The Bible Club offers opportunity to learn more about the Bible and about Christ. At the weekly meetings, ministers from various churches in the area speak to the students.



VARSITY CLUB

To be a member of the Varsity Club a boy must have won a varsity letter in at least one major sport. A few of the projects of the club are: Sponsoring dances, running the concession stand at the home basketball games, a money-making pancake supper, and many other events. When "membership day" arrives, each member initiates the new boys into the Varsity Club.



GAA

The Girl's Athletic Association is a club organized to stimulate enthusiasm for athletic values. Girls receive points for participating in basketball, softball, soccer, tumbling, and archery. Each winter the GAA stages its glamorous formal, high-light of the year.





Members of the Secretarial Club work industriously learning their skills.

S
E
C
R
E
T
A
R
I
A
L

C
L
U
B

Secretarial Club is open to students interested in office work. Each member must enroll in at least one year of shorthand. The club tries to encourage interest in and knowledge of new areas in this field. The girls sponsor parties, dances and dinners to raise money, and enjoy demonstrations of style and appearance for secretaries at their monthly meetings.



Mary Costa, president; Jannette Farmer, vice-president; and Mrs. Rhinehart, sponsor.



LIBRARY CLUB

Organized for students interested in books, this club provides the opportunity to learn more about the way the library works. Aided by Miss Bullock and Mrs. Goodwin, members gain experience in library procedures and learn the basic fundamentals of library techniques.

PEP CLUB

The Pep Club's purpose is to promote school spirit at basketball and football games. The members work many hours after school making clever posters, a good-luck teepee, and booster-buttons, keeping enthusiasm high throughout the year.





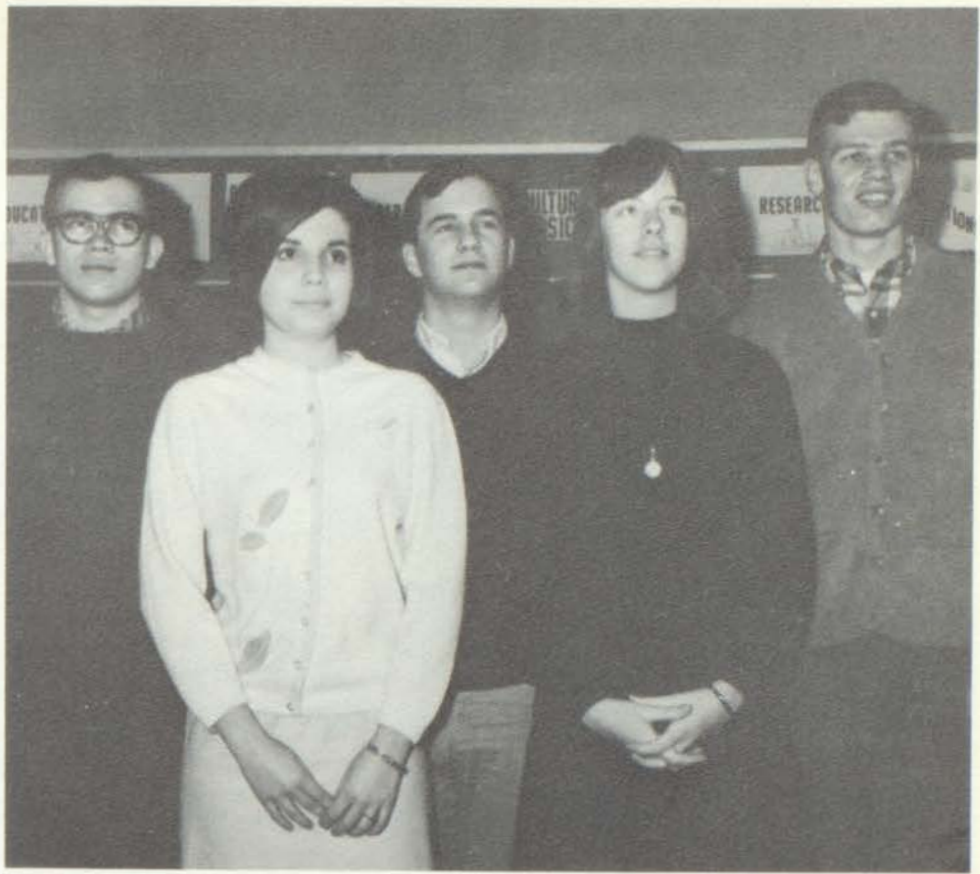
S T U D E N T C O U N C I L

Mr. Roy, sponsor; Jeff Venn, vice-president; Betsy Huggett, secretary-treasurer; Dave Reed, president; John Begg, parliamentarian; and Mrs. Grundman, sponsor.

The Student Council, under the able guidance of co-sponsors Mrs. Grundman and Mr. Roy, is a function of the student body made up of representatives from the four classes. This year the Student Council undertook many projects in service to the school. These projects included working with the faculty on an exam schedule; sponsoring the Holiday Hop, Homecoming week, and a clothing drive; and many other small but important tasks for the student body.



C
O
O
P
C
L
U
B



Barb Tanner, treasurer; Mary Lou Waggott, secretary; Gene Pettit, parliamentarian; Jeff Clee, president; and Tom Carroll, vice-president.



Tom Carroll and Gary Hoover, c o-op members, work hard at their jobs.

Co-operative training is a fairly new program at M.H.S. The group sponsors dances to raise money to have a graduation banquet. The members of this club are associated with area employers and work part-time to learn about a field of employment.



FRENCH CLUB

The objective of the French Club is to interest students more in the French language and French tradition. During the year Le Cercle Francais sponsored dances and hosted French Clubs from other schools in the area.

French Club officers: (Front row) Judy Noreyko, secretary; Betsy Huggett, president; (back row) Gary Praet, vice-president; Miss Norris, sponsor; and Helen Bostian, program chairman.

LATIN CLUB

The Latin Club provides many activities to inspire more interest in Latin backgrounds and to encourage students to study the "dead" language more thoroughly. A banquet in real Latin style is their highlight.



Bill Bossard, vice-president; Sue Oren, secretary-treasurer; Miss Wilson, sponsor; and Phil McKelvy, president.

SPANISH CLUB

Spanish Club's purpose is to explore the Spanish language and customs. They meet once a month, many times with native Spanish-speaking people as guests. The club is open to anyone talking, or having taken, the course.



Spanish Club members Debbie Smith, Ellen Burns, and Ruth Harris enjoy themselves at one of their meetings.



Mary Lou Harris, secretary; John Ramos, president; Mrs. Martens, sponsor; Dave Meza, vice-president; and Judy Trapp, treasurer.

ART CLUB

The Art Club members meet officially once a month, but every Thursday evening they open the art room for students to work on individual projects. Part of the club's purpose is to encourage talent and interest in art.



Gail VandyBogart and Cindy Rutherford work on a piece of art during an Art Club workshop.

FFA

The Future Farmers of American promote the interests of the students in agriculture. FFA members take part in field trips and conduct projects to improve their farming techniques. To take part in this organization, a student must be enrolled in agriculture and be acceptable to the other members.



INDUSTRIAL ARTS CLUB



Formed only two years ago, the Industrial Arts Club's purpose is to understand industry. Students involved in the club keep busy by doing shop work. They visit surrounding production plants in Albion, Kalamazoo, and Battle Creek. The members work on individual projects which help them to understand industry even better.



Front row: Merlene Getty, president; Mrs. Hansen and Mrs. McDougall, sponsors; Kathy Leach, vice-president; Back row: Linda Nail, treasurer; Sue Alexander, secretary; Elaine Hermon, merit chrmn.; Joyce Fairbanks, historian; and Carol Curren, parliamentarian.

Future Homemakers of America is a branch of the national association whose aim is to help girls prepare for the best possible home life. To be eligible for this club, girls must have completed one year of homemaking. The girls raise money by selling candy. They entertain their mothers, serve luncheons, and stage colorful holiday teas.

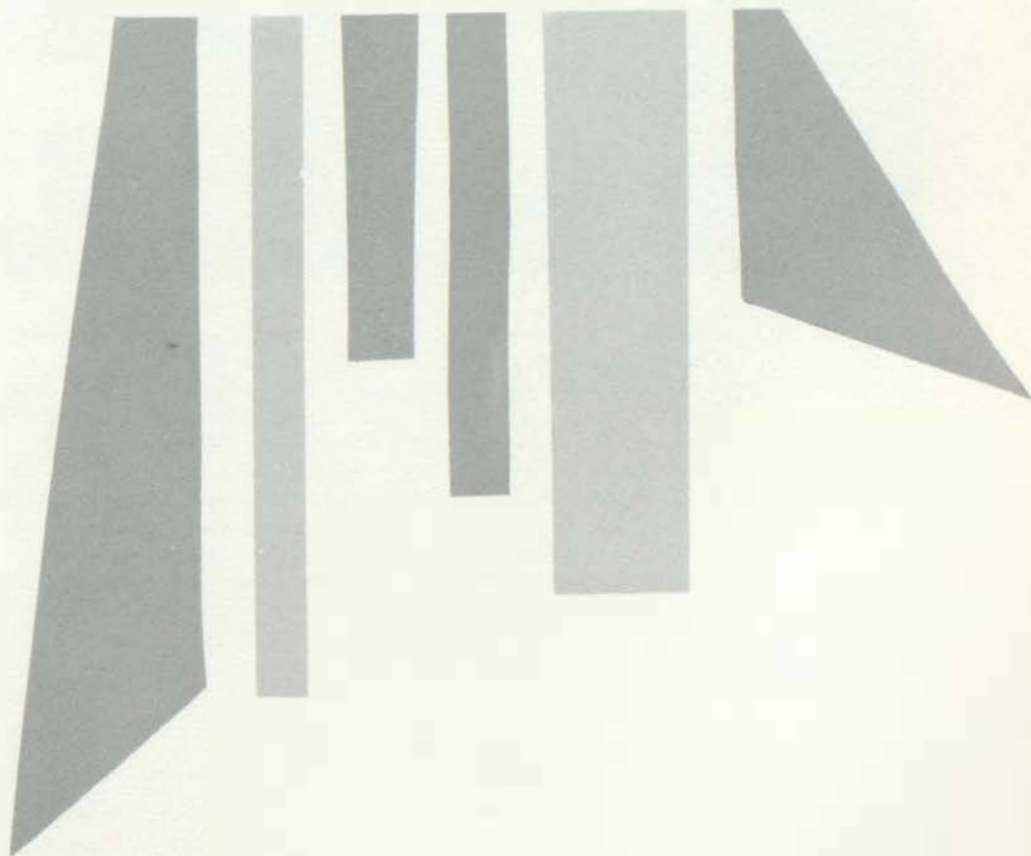
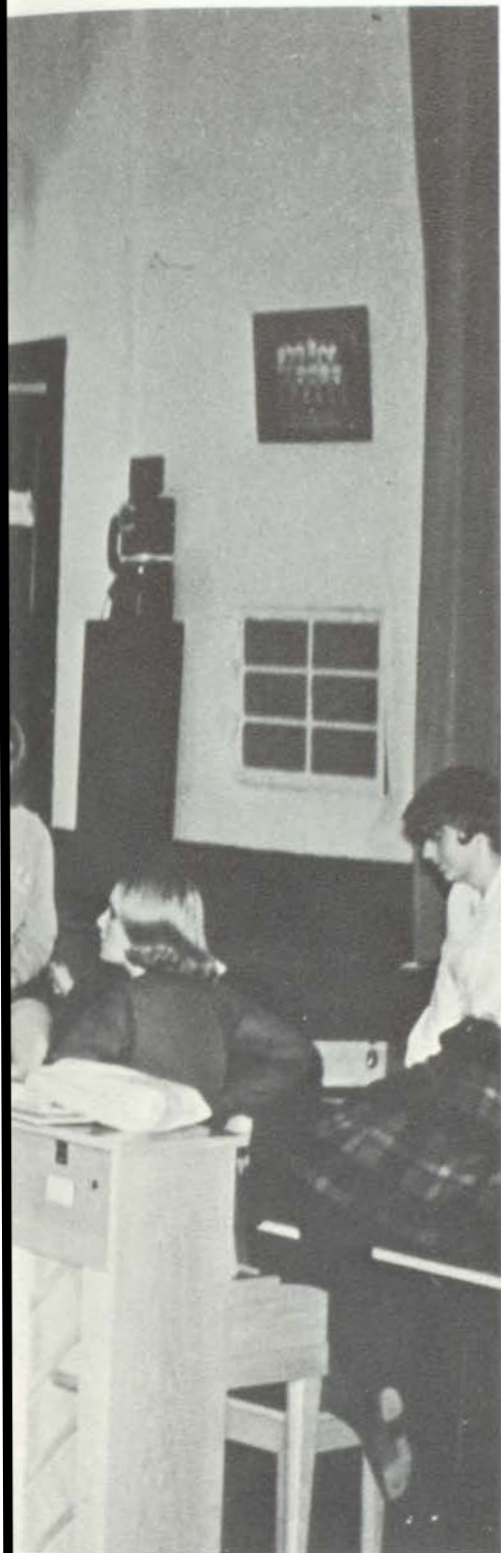


FHA girls enjoy working together on many worthwhile projects.



ENTERTAINMENT

Entertainment is an important part of school life as a parallel to academic classes, and MHS had many extracurricular programs for both the student body and the citizens of Marshall. In addition to the dances held almost every Friday night, the more formal occasions came with the G.A.A. formal and the J-Hop. There were many concerts put on by the bands, orchestras, and choirs, and two class plays presented during the year. All of these events combined to make our school year well supplied throughout the year.



SENIOR BAND



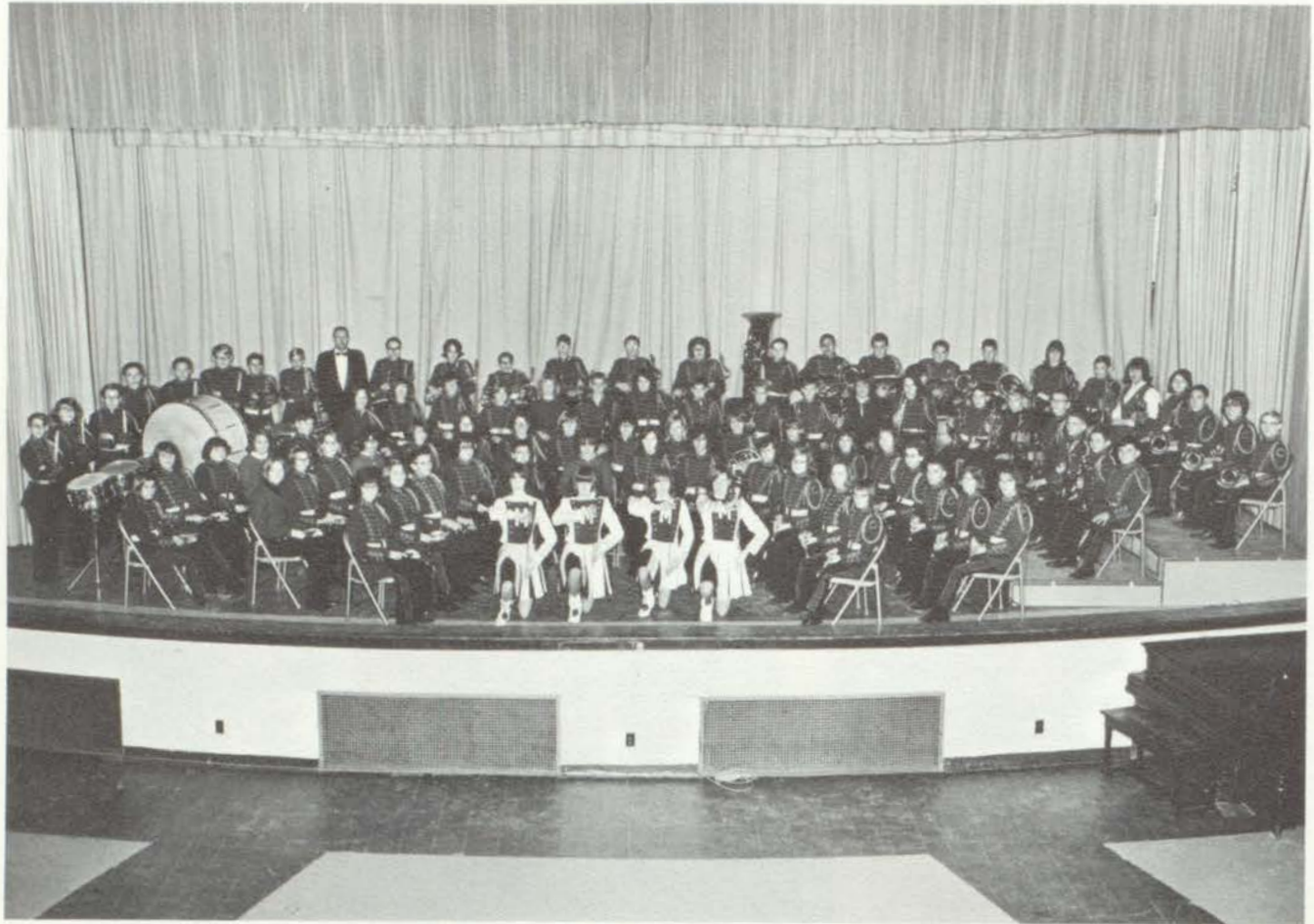
(Kneeling) Dick Lockyer, Tom Coats, Tom Lockyer, (First row) Doris Monette, Chris Dean Robert Meyers, Bo Aftenius, Peg Horton, Julia Grimm, Ricka Phillips, Sherl Swanson, Judy Ekdahl, Nancy Noreyko, (Second row) Kathy Smith, Jerry Maisner, Audrey Gillett, Joyce Baklund, Linda Grable, Marsha McNeil, Tom Schroeder, Jon Hobson, Bob Reizner, Margie Gage, Kathy Copeland, Mike Pratley, Sylvia Humphrey, Cynthia O'Leary, (Third row) Jill Russell, Barbara Phillips, Jack Ballard, John Orrison, John Sherwood, Doug Webb, John Rodgers, Haroldene Stratton, Susie Covill, Jim VanNess, Diane Musselman, Tony Widemon, Larry Waters, Jim Youngdahl, Roger Maisner, John Holt, Larry Peck, Gerald Mix, Pat Covill, Brett Bardo, Larry Maisner, (Standing) Randy Sly, Doug Richard, Roger Hagerty, Ron Yost, David Walters, Jim English, Roger Eagle, Jim Pardoe, Richard Wirtz, Mr. VanNess, Carol Curren, Jim Crumrine, Mike Kedo, Ruth Simmons, Larry Devenney, Brian Hice, Craig Conrath, Gary Waters, Jim Connelly, Mike Hamaker, Fred Pratley, Dave Kaser, Jim Hankey, Sandi Eagle, John Carver, John Olshansky, Becky Winter, Jim Peck, Bob Thick.



Marshall High School Drum Major
Tom Coats

Senior Band Director
Mr. Van Ness

JUNIOR BAND



(Kneeling) Sharon Carr, Brenda Saylor, Barbara Barnum, Val Robison, (First row) Linda Chaney, Shannon Cowles, Tim Horton, Debbie Easlick, Chuck Connelly, Diane Faurat, Patty Smith, Paula Goodrich, Betty Olshansky, Debra Holt, Donna Baklund, Lenore Bardo, (Second row) Sheri Kibler, Wendy Esbaugh, Cathy Rogers, Carol Saylor, Arlene Burnett, Mary Cox, Sherill Fry, Mary McLain, Clara Willerick, Terri Trupiano, Sally Covill, Penny Clee, Cherie Van Syckle, Terri Hamaker, Jean Orrison, Bob Bosserd, Andree Purcell, Debbie McNeil, (Third row) Brenda Hindenach, Jackie Luebs, Karen Maurer, Carol Antonio, Marty Nyhus, Sue Gladstone, Jackie Court, Joan Tobalske, Sheila Ferguson, Karen Cosgrove, Curt Hicks, Joan Miller, Mike Mead, Bob Treat, Clarence Brown, Barbara VanZandt, Wendy Yothers, Doug Sink, Randy Ellis, Mark Wolf, Doug Ditto, Mike Brown, Doug Cameron, (Fourth row) Mike Barnes, Jan Mumaw, Larry Gard, Stuart Webb, Gary Baklund, Duane Blevins, Glen Creed, Donn Martens, Mr. VanNess, Bruce Rivers, Donnella Maurer, David Wyndendorf, Richard Fry, Bruce Taylor, Sue Miller, Lynn Hankey, Vance Hills, Clair Stevens, Bill Trupiano, Robert Gill, Marla Reynolds, Larry Sommers, Marsha Jessick, Sue Bischoff, Larry Dobbertien, Pat McClung, John Cuber.

SENIOR ORCHESTRA



(First row) Irv Stulberg, Christina Kuschman, Kay Anderson, Barbara Hindenach, Pat Smith, Carol Thyer, Janet Foster, (Second row) Julia Hutchins, Suzette Belcher, Alice Noble, Darrell Simpkins, Bruce Reniger, Dan Stulberg, (Third row) John Langan, Linda Schaberg, Vicki Heater, Judy Eckdahl, Nancy Noreyko, Peg Horton, Julia Grimm, Bo Aftenius, Robert Myer, Chris Dean, Marsha McNeil, Doug Richard, Roger Hagerty, Randy Sly, David Walters, Mr. VanNess, Jim Hankey, Jim Peck, Bob Thick, Margie Gage, Bob Reizner, Jan Hobson, Tom Schroeder, Larry Maisner, Brett Bardo, Pat Covill, Brian Hice, Henry Didier, Jon Youngdahl, (Missing) Cathy Trupiano.

JUNIOR ORCHESTRA



(First row) Lois Love, Steve Fox, Janice Groesbeck, Ellen Peacock, (Second row) Sue Chapman, Randy Hulce, Carol Wilson, Mary Shellenberger, Mary Mathews, Margaret Dunn, (Third row) Ruth Olshansky, Cindy Collins, Ann Baker, Jari Carver, Vicki Hayes, Susan King, Bob Taylor, (Standing) Penny Simpson, Miss Rogers, (Missing) Debra Emmert, Julie Hindenach, Martha Hutchins, David Kellogg, Lynn Long, Mike Stulberg.

SENIOR HIGH CHOIR



(First row) Sandy Simmons, Annette Gordier, Darlene Wood, Sharon Soule, Chris Hughes, Peggy Jennings, Delia Barroso, Martha Deming, Jean Brannon, Terri Trupiano, Mrs. Deming, (Second row) Pat Behling, Marsha Eash, Diana Nobbs, Gloria Lapham, Steve Coates, Bruce Bicknell, Dan Meza, Omy Lee Shepherd, Jill Russell, Kara Reagle, Caren Rose, Jane Amaro, (Third row) Stephaine Winter, Sharon Dean, Cathy Darling, Mary Ansell, Joanne Cook, Delores DeLaney, Alvin Fox, Harold Luebs, Al Beattie, Eugene Moore, Sharon Bock, Priscilla Conely, Gloria Mathews, Kay Tucker, Marilyn Gard, (Absent from picture) Cheryl Wilson, Jake Good, Sandy Rudolph, Gail Rowe.

JUNIOR HIGH CHOIR



(First row) Mrs. Deming, Wendy Esbaugh, Vicki Saylor, Kathy Banfield, Vicki Lautenslager, Gerry Mills, Jackie Pombier, Cheryl Rose, Sandra Brown, Mary Behl, Kim Wilson, Pamela Swan, (Second row) Barb Struble, Sue Fairbanks, Carol Ryan, Mary Padilla, Lauralee Bushman, Regina Capman, Betty Music, Sally Tazelaar, Pat Rook, Jacquelyne Luebs, Mary Waidelich, Judy Jennings, (Third row) Margie Gage, Doug Damon, Rick King, Charles Patton, Clifford Willerick, Kathy Schaberg, Sharon Hoyt, Susan Pardoe, Pat McClung, Diane Noblit, Connie Wireman, (Missing) Jane Cook, Helen Crabill, Marylin Freele, Joan Good.

MARSHALL SINGERS



(First row) Mrs. Deming, Ruth Mathews, Anne Mosier, Dave Meza, Tommy Buyes, Tom Coates, Audrey Gillett, Jan Ellis, (Second row) Kathy Trupiano, Helen Vincent, Rick Albaugh, Bob Thick, Jim Gladstone, Cindy Barnes, Chris Allen, (Third row) Sharon Hayes, Susie Chapman, Brian Hice, Carl Riegle, Dave Bailey, Ken Nichols, Kathy Schroeder, Linda Pratt (Missing) Lewis Atley.

GIRLS GLEE CLUB



(First row) Mrs. Deming, Paula Simmons, Becky Winter, Chris Kellogg, Julie Chapman, Pat Spees, Alice Jenkins, Donna Adams, Lona Shaw, (Second row) Kay Bartsch, Sharon Farmer, Alice Goodman, JoAnne Womack, Gerry Goodman, Mary Shepard, Sharon Rapp, Patti Howard, Marianne Weyburne, (Third row) Katrina

Reynolds, Jeanne Hamilton, Kathy Maisner, Rodna Rudolph, Glendo Eastabrook, Joyce Bakland, Sally Hart, Connie Shaw, Sheryl Phillips, Kathy Simpson, Kate Bailey, Marilyn Laupp, Kathy Ryan, (Missing) Amelia Casarez, Chris Dillon, Jane Hileman, Karen Howard, Helen Jenkins.



On February 13, 1965, the juniors presented "The Many Loves of Dobie Gillis" under the direction of Miss Katherine Burlingame and student director, Diana Tolan. "With a cast of thousands" the juniors performed their annual play before one of the largest audiences ever to attend any class play at Marshall High School.

The play revolved around the love affairs and problems of Dobie Gillis, a senior at Salmon P. Chase High School. The most humorous characters were Stella Kowalski and her Schottische Five. Stella was the happy-go-lucky, able-bodied leader of the questionable, comic band made up of five of the most unfeminine women imaginable.

Besides Stella and her crew, the audience was also introduced to Limbo Lamb, the most glamorous and popular movie star of the time. She came to make her appearance upon being told that *Life* magazine was covering the dance. After finding out it was all a lie to get her there, she attempted to leave and thus put Dobie's honor and character at stake. However, poor Limbo did not count on Stella stopping her. By the time, the masterful band leader was done with her, she was more than willing to stay and make her appearance.

Everything turned out for the best in the end, and the dance was the best in the history of the school.



JUNIOR PLAY

"THE MANY LOVES OF DOBIE GILLIS"



CAST

Dobie Brian Burns
Petey John Johnson
Mr. Pipgrass Tom Bischoff
Mr. Dixon Paul Mestemaker
Mr. Harrington Harold Engelter
Mr. Gillis John Twist
Bill Al O'Leary
Bonnie Paula Peters
Helen Charlotte Whitney
Miss Forepaugh Sharon Bock
Imogene Cherie Connelly
Frannie Beth Waidelich
Betty Carol Crumrine
Mrs. Dixon Merlene Getty
Stella Karlene Kraushaar
Majeska Sue Carr
Rutka Diane Tolan
Sletka Pat Babcock
Dombra Mary Lou Harris
Simpka Kathleen Leach
Miss Neuman Martha Cooper
Limbo Lamb Shirley Barber
Adele Andrea Winters
Sally Carol Thyer
Lola Kathy Schroeder
Polly Carol Langan
Maudie Ann Moses
Pansy Pat Wilson

SENIOR PLAY



CAST

Dr. Caldwell	Mark Mosier
Mrs. Caldwell	Nancy Monje
Mr. Prince	Rick Albaugh
Mrs. Prince	Merlene Getty
Mr. Rogers.	Paul Mestemaker
Mrs. Rogers	Kathy Schroeder
Mr. Woodbridge	John Twist
Mrs. Woodbridge	Charlotte Whitney
Mr. Wright	Dave Walters
Mrs. Wright	Chris Pedersen
Mr. McGinnis	Joe Shippell
Mrs. McGinnis	Sharon Dean
Miss Frank	Sharon Bock
Mr. Kovalesky	Steve Purdy
Bob McGinnis.	John Begg
Bert Hendricks.	Bill Albrecht
Elizabeth Wright	Kathleen Leach
Janet	Paula Peters
Carol	Martha Cooper
Madge.	Carol Crumrine
Tommy Prince	Brian Burns
Alice Woodbridge.	Karlene Kraushaar
Susan Caldwell	Beth Waidelich
Joey Rogers	Bob Myer
Bill McGinnis	Paul Caywood
Painter.	Don Hindenach



A stage with no scenery created the atmosphere for this year's senior play, "The Remarkable Incident at Carson Corners." Presented on November 20, 1965, it depicts a mock trial of a man accused by the high school students of murder. As the trial progresses, the actual guilt shifts from the accused janitor to include many of the more prominent townspeople. Under the superb direction of Miss Burlingame and student director Diana Tolan, the play was a complete success.



"THE REMARKABLE INCIDENT AT CARSON CORNERS"

DANCE INFORMALS



Informal dances were held each week following the games in the high school cafeteria. Each week they were sponsored by different clubs or organizations to earn money for their yearly activities. To add variety, various bands from the area often played. Sometimes the dances were transferred to the gym where a soc-hop was held with D.J.'s often in attendance.



GAA FORMAL 1966

"TAHITIAN PARADISE"



How about a nice Tahitian punch?

COMMITTEES

Decorations	Jan Collins Ann Leyden Ann Mosier Linda Tidey
Refreshments	Mary Miller Carol Soebbing
Programs and Tickets	Barb Collins Cris Dean
Band	Merri Knapp
Coat Check	Pat Zink



Busy GAA girls work hard on decorations.



Couples enjoy refreshments on the deck of the gym.

J-HOP

'65



"It's all in a day's work."



"Say it with flowers!"



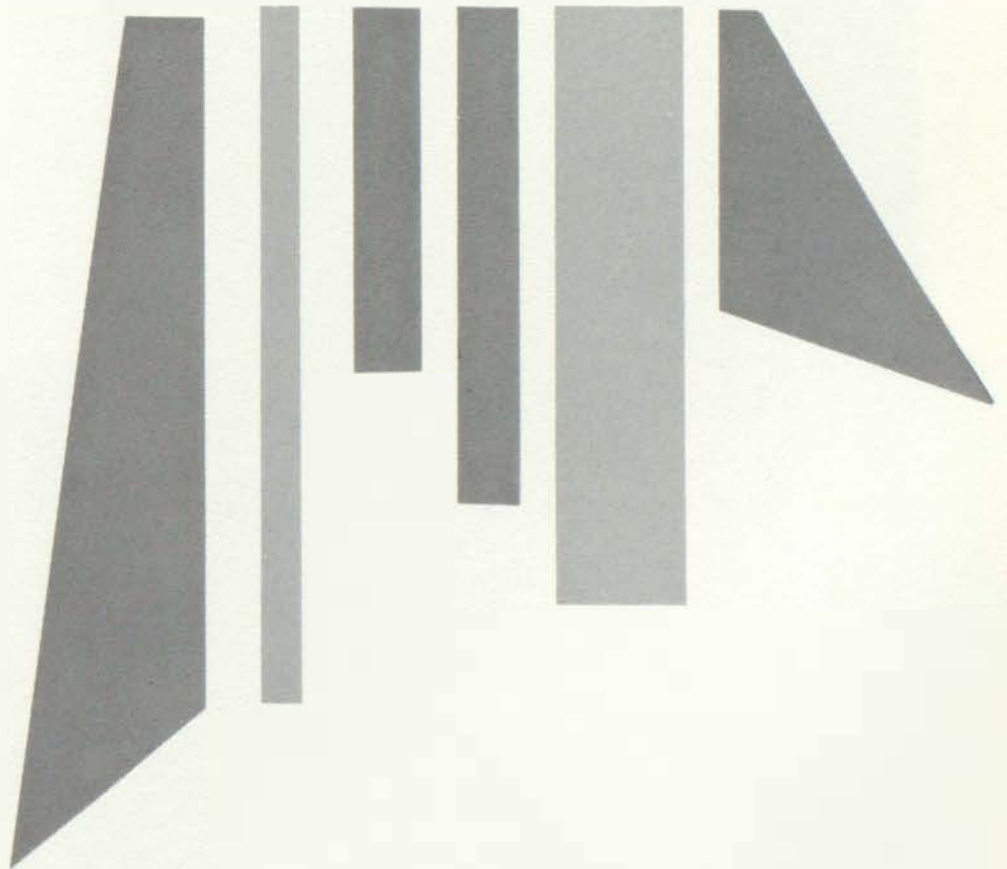
"Do well and right, and let the world sink!"



ATHLETICS

Athletics are an intrinsic part of high school life. They provide a challenge and satisfaction for the participants and are something that most students can identify with, cheer for, and live for.

MHS this past year has had a fine athletic season. Football, cross country, and basketball finished high on the Twin Valley ratings. It is hoped spring sports will do as well as in previous years.





Coaches Washburn and Martens gaze intently at the play on the field.



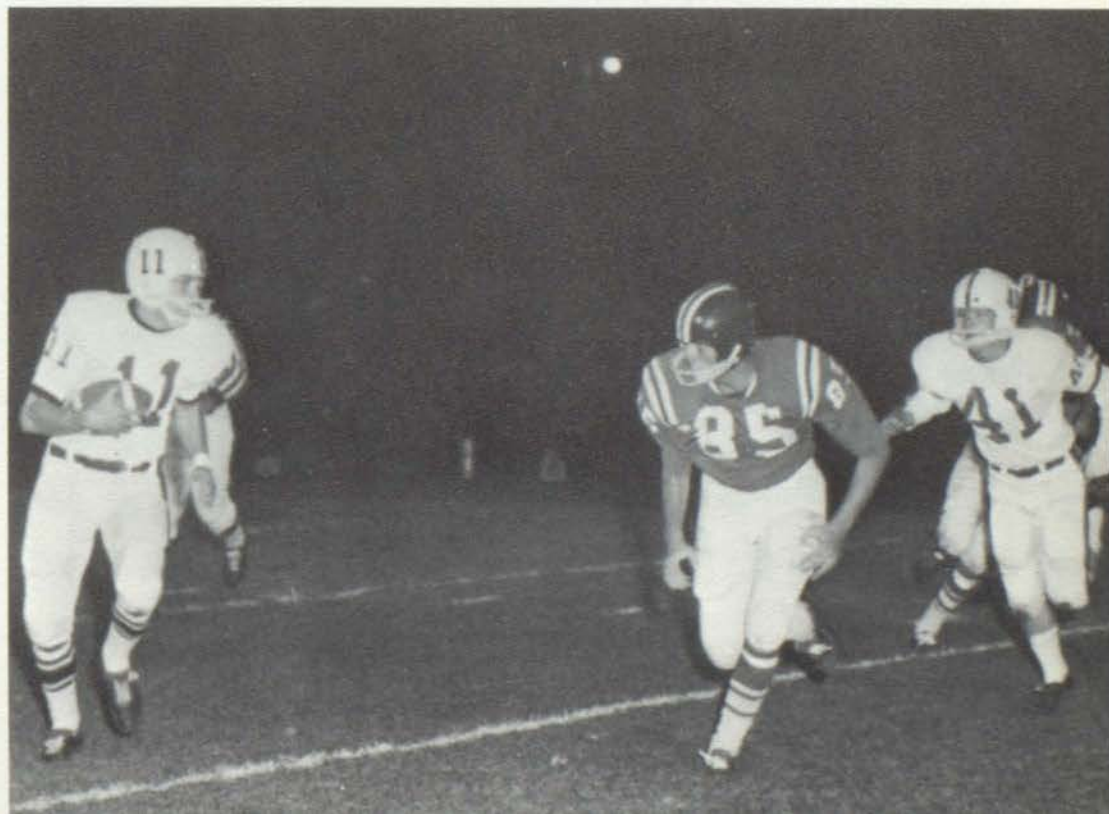
MHS	Opponent	
27	Pennfield	7
34	Hillsdale	6
35	Three Rivers	7
27	Harper Creek	0
6	Sturgis	20
0	Coldwater	7
45	Lakeview	0
6	Albion	19



This year MHS had a successful football season with a total of five wins and three losses. The main factor behind the fine season was the unity and total effort of the team.

This year the coaches used two captains, a new pair for each game, and at the end of the season, the team elected two honorary captains. Also it was the initial year for an honors system. Players were awarded stars for a pass interception, for a recovered fumble, or if they were named Redskin of the week.

(First row) Dennis Flynn, Bob Hookway, Gary Gullett, Phil Thompke, Bob Ulrich, Dave Hagerty, Walt Smith, (Second row) Miles Coffman, Steve Spooner, Jerry Tucker, Harold Engleter, Larry Stevens, (Third row) John Davies, John Nash, Dennis Nelson, Tom Bischoff





The special award winners and their parents: Bob Ulrich, most valuable; John Ramos, oil can award; David Hagerty, most improved player.



Harry Crandall sees day light, but is tripped up by a Pennfield linebacker.

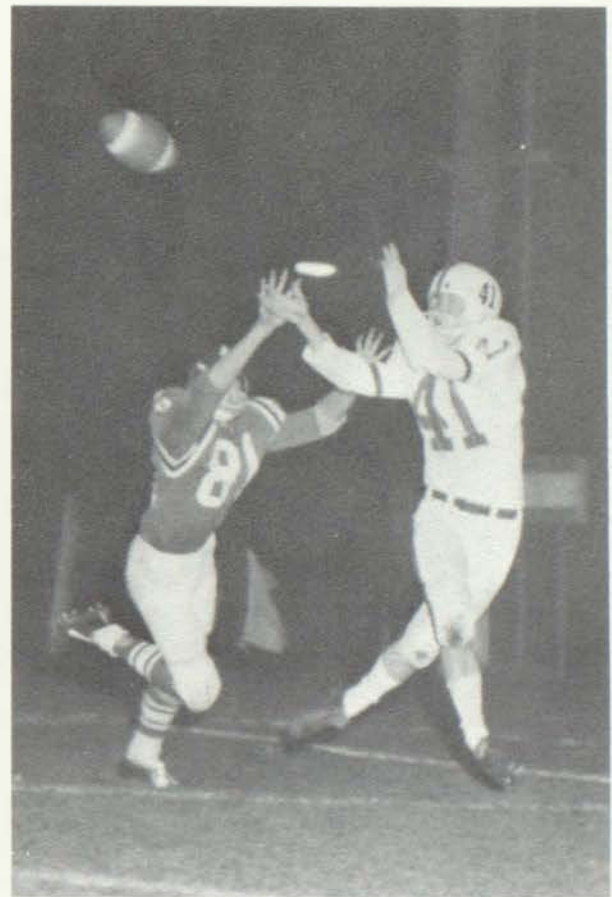




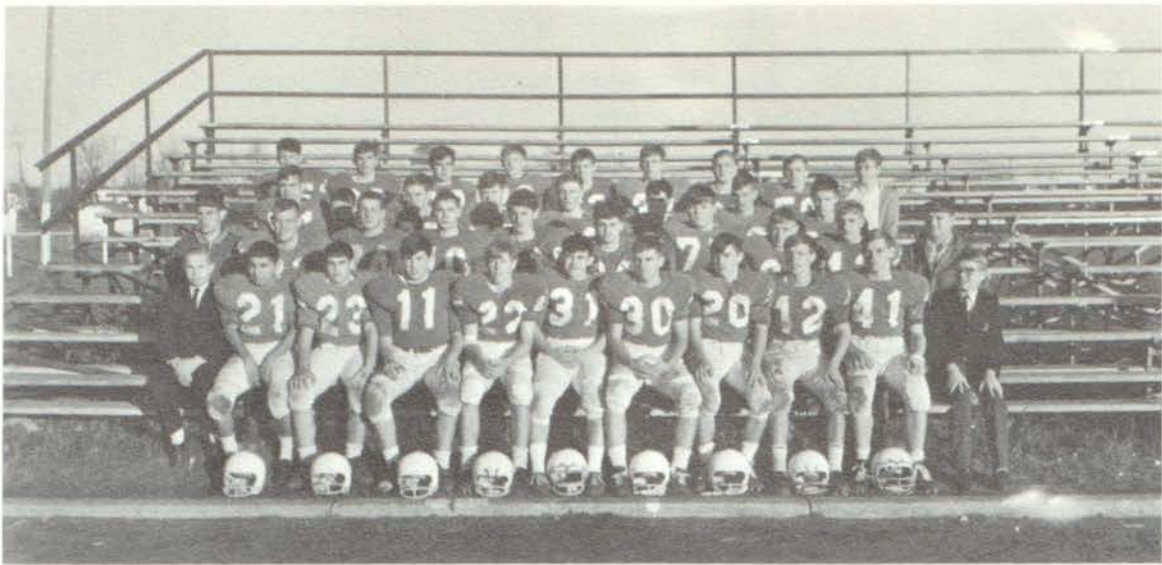
Harry Crandall breaks through Lakeview's defensive line for a touchdown.



(First row) Harry Crandall, Lynn Glenn, Gary Praet, Jack Hartman, John Ramos
 (Second row) Dick Clayborn, Russ Howard, Jerry Nye, Gene Tucker, Lee Russell,
 Tom Atkins (Third row) Byron Hoffman, John Schneider, Dave Rodgers, Coach Washburn.



Jack Hartman pulls in a touchdown pass from quarterback John Schneider for six points.



JUNIOR VARSITY

(First row) Manager Tom Buys, Rudy Ramos, John Monje, Frank Line, Dave Rodgers, Tim Banfield, Dale Hopkins, Russ Gullett, Bruce Bicknell, Jim Anderson, Manager Chuck Washburn (Second row) Coach Ball, Tom Waidelich, Larry Baker, Steve Redman, Steve Scheick, Gary Lake, Mark Hindenach, Steve Coats, Doug Carlisle, Coach Roy (Third row) Bart Cook, Dave Morgan, Don Weakly, Jerry Crapo, Dave Buskirk, Dave Soebbing, Steve Williamson, Tom Thompke (Fourth row) Jim Wynne, Dave Heatherly, Dick Lockyer, Tom Wood, Bill Bosserd, Tom Pederson, Pat Galloway, Ken Hughes, Tim Flynn. Donn Bagi was absent when picture was taken.



FRESHMEN

(First row) Martin Doolittle, Dave Keiper, Doug Spooner, Don Sundberg, Tim Thompson, Bruce Murphy, Jeff Sherman, Randy Aalbrege (Second row) Duane Blevins, Joe Kelly, Clair Stevens, Gary Baklund, Lon Burrows, Dave Harrington, Jim Sanders, Mike Edwards, Danny Wallen, Jim VanNess-Manager (Third row) Dale Gilger, Wayne Wright, Vern Harris, John Langan, Dennis Wydendorf, Jim Connelly, Bernd Freiny, Bob Wheeler, Jake Good (Fourth row) Jim Gabriel, Terry Buskirk, Lammy Topp, Dan Stevens, Dan Schnaitman, Gary Brininstool, Willy Ramos, Mark Bradley, Allen Nearing, Tommy Schneider (Fifth row) Jim West, Jeff Hoeltzel, Tom Lockyer, Jim Youngdahl, Mike Whittaker, Winston Glenn, Coach, Peterson, Coach O'Dell, Gerald Allen

HOMECOMING 1965



Homecoming 1965 was initiated by the announcement of the queen and her court. The week preceding the Homecoming game was filled with numerous activities. Thursday night a snake dance was made from the high school to the athletic field. This was followed by the traditional bonfire and pep rally. Thursday and Friday school was not held because of MEA Institute. Consequently there was no hoe-down day or pep assembly. Friday afternoon an assembly was held in the gym. Jackie Beavers and the Continentals provided entertainment and the cheerleaders did a fine job of boosting school spirit.

After the assembly classes pulled in the tug-of-war, with the Freshman class coming out the victor. Friday Redskin fans kept a vigil in the teepee, camped in front of the bank. Friday night the Homecoming parade was held. Included in the parade was the band, the Queen and her court, and the class floats. The classes had been working industriously on the floats during the past week. The game was played by rain but our players made a valiant effort only to lose to the Coldwater Cardinals, 7-0. Homecoming was climaxed by the semi-formal dance held Saturday night in honor of the Queen and her court.





The queen and her court and their escorts. Allison Twist, escorted by Jack Hartman, Yvonne Carr, escorted by Brian Burns, 1964 Homecoming queen, Chris Fisher, escorted by Mike McLain, 1965 Homecoming queen, Sue Chapman, escorted by Bruce Cook, Ann Mosier, escorted by Jim Walters, Geri DeVine escorted by Dan Metzger.



Sue Chapman
Queen



Yvonne Carr
Senior Attendant





"Slightly" canned!

Ann Mosier
Junior Attendant

Allison Twist
Sophomore Attendant

Geri DeVine
Freshman Attendant





VARSITY—Martha Cooper, Ellen Eckloff, Karlene Kraushaar, Jane Boyd

Under the guidance of Mrs. Bruce Martens, the cheerleaders have done an exceptional job in promoting and encouraging school spirit. Long hours of practice contributed to the squads' fine performance. The cheerleaders worked diligently at the pep assemblies and concentrated on the promotion of good sportsmanship and school spirit.



JUNIOR VARSITY—Judy Trapp, Ann Mosier, Mari Winsor, Susie Richardson, Joan Tropp, (in front) Diane O'Leary



Mrs. Bruce Martens, cheerleading sponsor, laughs at the cheerleaders antics.



Phil Lake, manager, John Ramos, Doug DeVine, Jerry Tucker, John Schneider, Lorry Taylor, Denny Thomas, Glen Gray, Joe

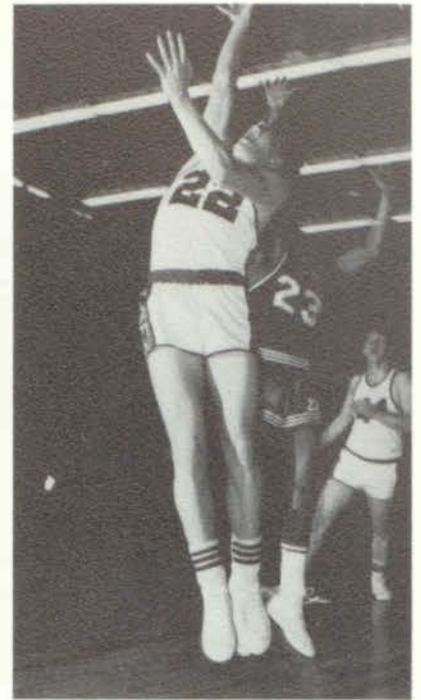
Wasielewski, Bruce Cook, Greg Slight, Russ Pryor, Jim Walters, Tom Atkins, Dole Hopkins, manager, Coach Don VanderGeest.

The 1965-66 basketball team, under the coaching of Don VanderGeest, had a very successful season. This outstanding season ended with a 14-6 record. The Redskins made an effort for first place but due to two unfortunate losses, placed third in Twin Valley. The members of the squad put forth great effort and worked together well as a team. The student body of MHS was proud of the team and Coach VanderGeest during the entire season.

	Opponent	MHS
Hastings	80	75
Lakeview	48	74
Hillsdale	63	77
Albion	78	80
Three Rivers	65	66
Coldwater	66	80
Sturgis	50	42
Harper Creek	56	81
Hillsdale	84	58
Pennfield	48	67
Springfield	76	85
Albion	69	71
Lakeview	68	71
Three Rivers	65	68
Sturgis	59	50
Coldwater	82	81
Harper Creek	99	74
TOURNAMENTS		
Harper Creek	45	45
Pennfield	63	65
Albion	65	64



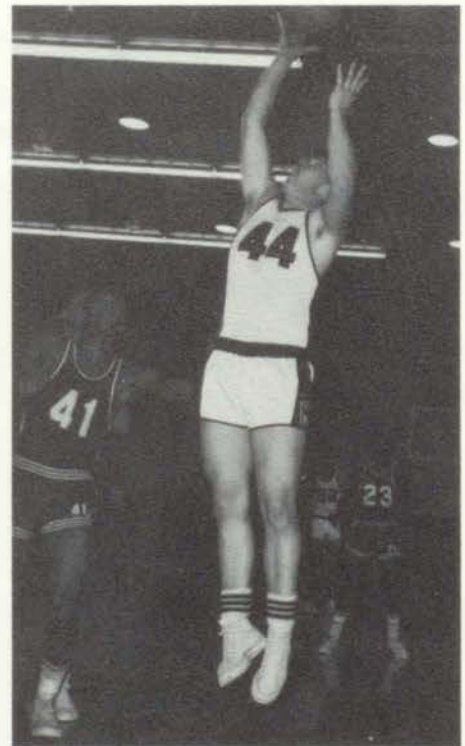
Phil Lake in action before the game.



Jim Walters and Jerry Tucker wait for the rebound.



Glen Gray dunks the ball to break the tie.



Jerry Tucker jumps high for the rebound.



JUNIOR VARSITY—Rudy Ramos, Steve Martin, Bill Bossard, Dave Rogers, Bart Cook, Pete Tazelaar, Dave Heatherly, Steve Redman, Tom Wood, Pat Galloway, Jim Wynne, Dave Mann, Dan Schnaitman (manager), Coach Burt O'Dell.



FRESHMAN—Vern Harris, Manager, Darrell Simpkins, Dale Gilger, Bruce Murphy, Bruce Bossard, John Langan, Manager, (Second Row) Jim Anderson, Bob Currie, Bernd Frieny, Randy Aalbrechtse, Jim Thompson, Coach Paul Peterson, (Third Row) Dave Harrington, Willie Ramos, Roger Maisner, Tom Schneider, (missing was Winston Glenn).



EIGHTH GRADE—(First row) Coach Ernst Ball, Ernie Garza, Randy Ellis, Ben Kelly, Tom Hopkins (Second row) Richard Humphries, manager, Greg Harrington, Albert Lehmkuhl, Joe Tucker, Ron Goodwin, manager, (Third row) Rick Thompson, Loey Belda, Tim Horton, Dan Stulberg, Kirk VanderGeest, (Missing Tom Hess, Tom Bachman)



SEVENTH GRADE—(First row) Bob Howard, Andy Hammond, Gene Willis, Nick Wheeler, Tom Kaser, Bob Treat (Second row) Bill Bastian, Rick Zull, Rick Smelak, Jim Sill, Ken Allen, Fred Crawford (Third row) Curt Hicks, Mike Heatherly, Phil Livingston, Phil Allen, Bruce Taylor, Van Eyre, Roger Fitch, Coach Bill Washburn



Marshall's golf team, under the guidance of Coach Don VanderGeest, is looking forward to a productive year in 1966. With three returning lettermen, the remainder of the squad will consist of upcoming novices. The team has good chances of attaining the state finals, as it did last year, with returning experience and early spring practices two major contributing factors. This year looks bright for Coach VanderGeest's team, with many new golfers filling the positions of graduating seniors.

The MHS tennis team is entering this season with eighteen straight wins in the past two years. Last year was the team's finest year as they placed second in Twin Valley.

The returning lettermen are Dave Heatherly, Bruce Cook, Ray Crull, Tom Atkins and Jim Walters. Another successful season is dependent on these lettermen and new players for Coach Burt O'Dell's squad.



Marshall placed second to Sturgis in the Twin Valley Conference and third in the regionals. Further showing the ability of the 1965 Cross Country team was the honor of placing 16th in state competition.



Alan Stulberg gains on Tony Presecan, with Raul Herrera trailing from behind, in the time trials.

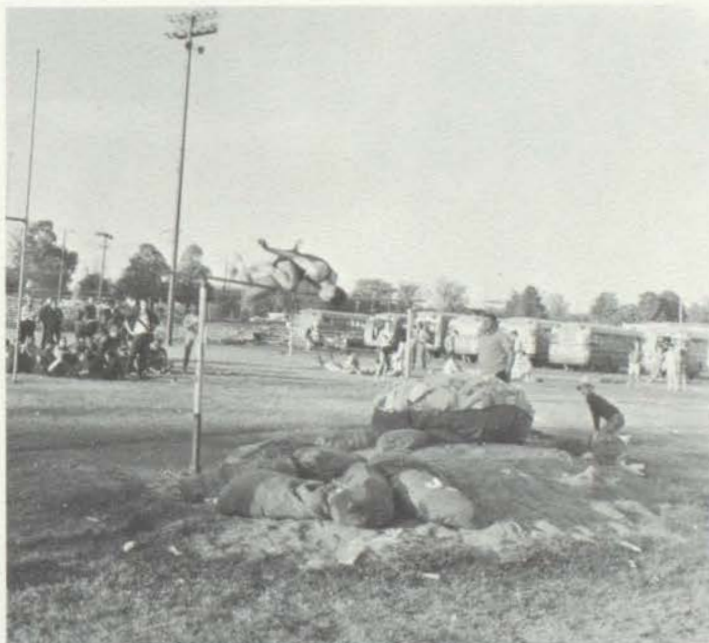


(First row) Alan Stulberg, Raul Herrera, Dennis Wilson, Van Hoffman, Mike Schroeder (Second row) Coach Mack, Maynard Clark, John Rodgers, Tony Presecan, Harold Dickson, Jerry Maisner (Third row) Larry Goodwin, Ron Wolf, John Strough, John Johnson, Russ Pryor, and Jeff Venn.

TRACK

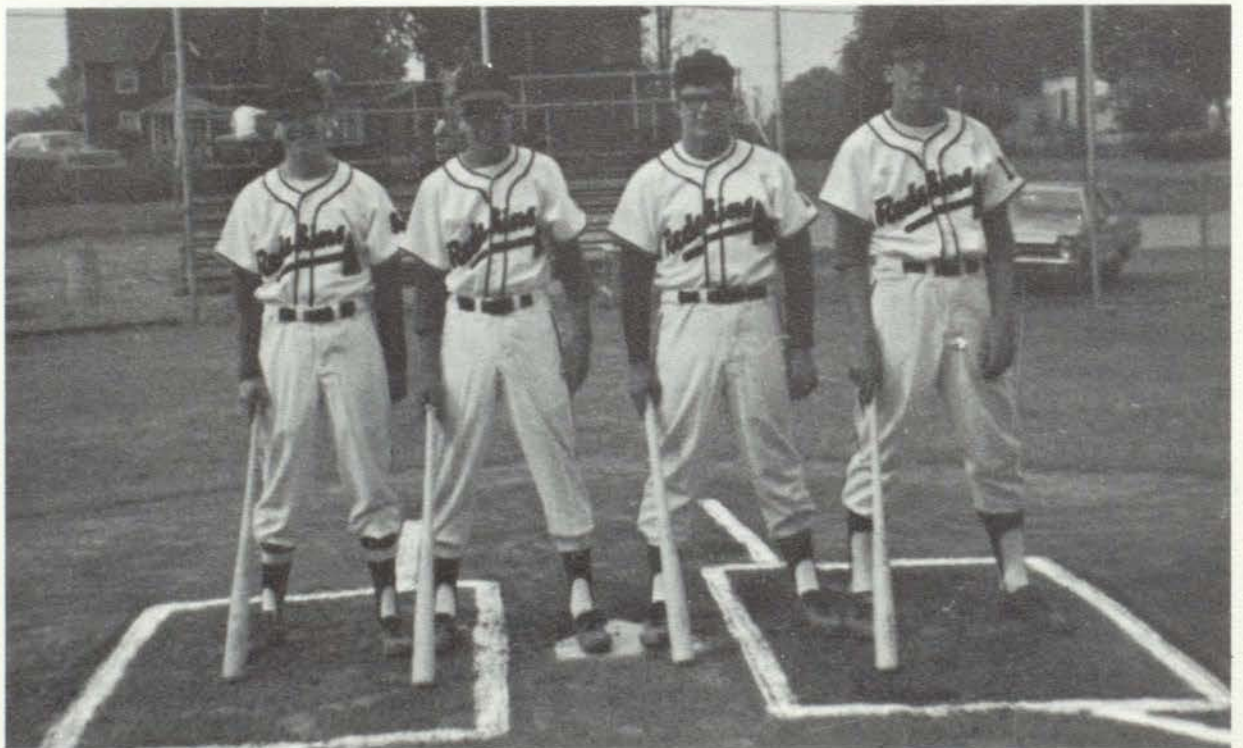


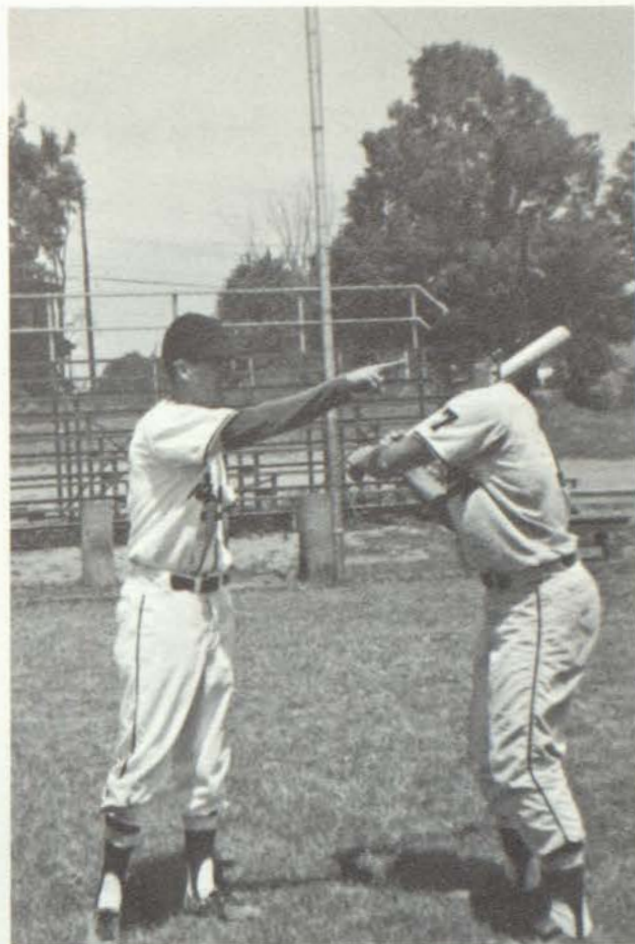
The eyes of the spectators are on Lynn Glenn as he vaults for Marshall.



The pole quivers as a Marshall jumper clears six foot.

The Marshall thinclads placed second in the Twin Valley Conference with Albion placing number one. They won six dual meets and lost one. While losing some good athletes, the team retained good experienced squad members.





(seated in front) Managers Randy Aalbregste and Phil Lake, (First row) Phil Thompke, Maynard Clark, Mike Kelly, John Bastian, Harry Crandall, Bob Moon, John Ramos (Second row) Coach Cooper, Tony Presecan, John Schneider, Ed Crull, Larry Taylor, Phil Lord, Coach Fleser,

For the fourth straight year the Marshall Redskin baseball team won the Twin Valley championship. This was the eighth title won since 1949, under the coaching of Mr. Joe Cooper. Coach Cooper has had a total of 204 victories and only 81 losses.

Mr. Cooper was assisted by Ivan Fleser who gave special guidance to the pitchers.

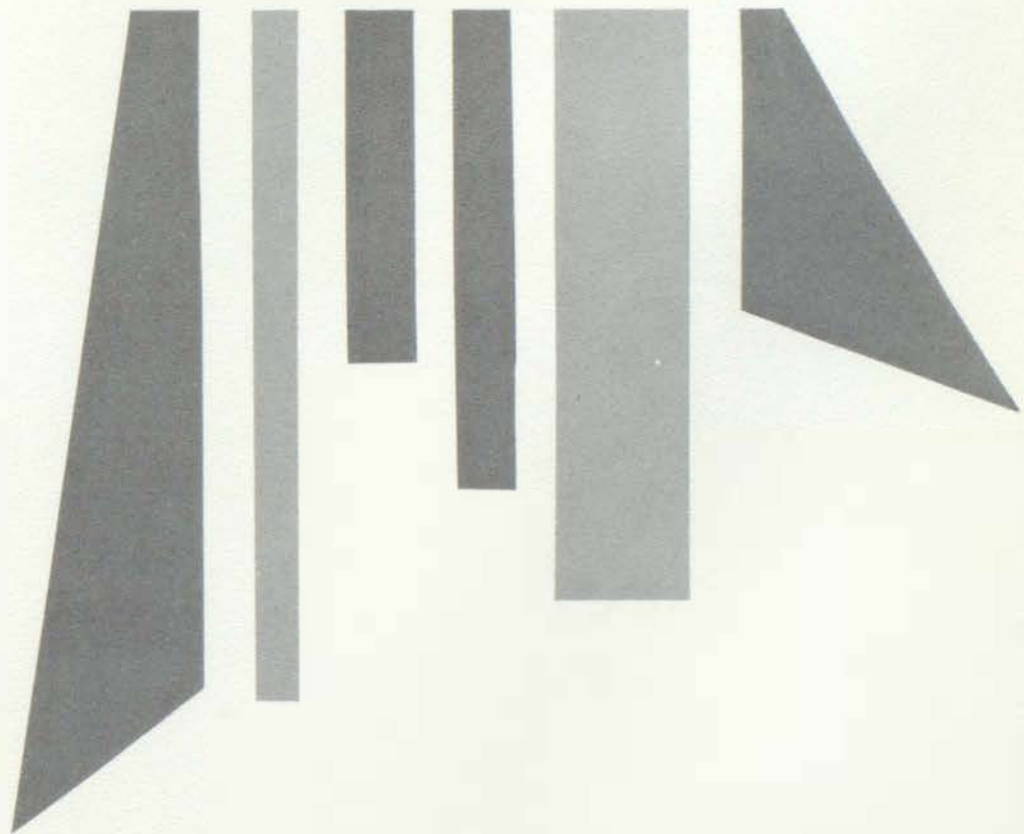
Players given all-conference recognition were: John Ramos, Larry Taylor, Ed Crull, John Schneider, and Mike Kelly.



JUNIOR HIGH

Junior High is very important. The students are no longer elementary children; neither are they high school students. They are different from either of these, therefore, a special school, the junior high is provided for them. As they enter seventh grade they are now ready to shoulder responsibilities like young men and women.

Grades 7 and 8 offer many exploratory experiences. The students suddenly begin looking for new worlds of knowledge to conquer, matching their abilities and aptitudes with new opportunities for growth, the better to understand the environment in which they must learn to work and prosper.



Douglas Albrecht
Kenneth Allen
Philip Allen



Randy Anderson
Carol Antonino
Becky Bachman
Dick Boker



Michael Barnes
Barbaro Barnum
Bill Bostian
Mary Behl



Ken Behling
Richard Bennemon
Sue Bischoff
Richard Bissett
Bill Blakeslee



Lorry Blakeslee
Domingo Bocanegra
Erasmo Bocanegra
Robert Bossert
Roy Boyd



Pot Brook
Mike Brown
Sondra Brown
Sherry Burdick
Perry Camp





Kathleen Canaday
Regina Capman
Michael Caron
Cathy Carrington
Robert Casto



Jerry Caudill
Daniel Chapman
Mary Chene
Michael Chism
Katherine Clee



Mary Coffman
Terry Cook
Robert Corvin
Karen Cosgrove
Jackie Court



John Crapo
Fred Crawford
Glen Creed
Gloria Crull
Doug Damon



Debby Daniels
Debby Deems
Ronald DeForest
William Demming
Walter Dickson



Larry Dobbertien
William Dobbertien
Margaret Dunn
Dennis Easler
Rosemary Elyea

Von Eyre
 Cecil Former
 John Faulkner
 Sheila Ferguson
 Rodger Fitch



Sheryl Foster
 Marilyn Freele
 Charlene Freds
 Michael Freiny
 Richard Fry



Lorry Gord
 Roland Genest
 Robert Gill
 Sue Gladstone
 Joan Good



Diona Goodman
 James Goodman
 John Goodman
 Tina Goodman
 Denise Goodrich



Carlton Greer
 Steven Groth
 Teri Hamaker
 William Hammond
 Linden Hankey



Sharon Horruff
 Philip Hastings
 Vicki Hayes
 David Hazel
 Koren Hazel





Michael Heatherly
Kirt Hicks
Irene Hidenfelter
Bonnie Hills
Brenda Hindenach



Jo Ann Hockett
Deborah Holt
Bobby Howard
James Hoyt
Ken Huggett



Ann Irwin
Linda Jackson
Charles Jelinek
Judy Jennings
Gregolan



Paula Wilson and Chuck Jelinek tryout for a play in dramatics class.



Tom Kaser
Chuck Kelley
Cindy Kibler



Alfred Cramer
Margaret LaForge
Larry Leonard



Alan Lien
Christine Line
Phillip Livingston

Amy Llewellyn
 Joyce Long
 Bill Luebes
 Leo Lux



David MacDonald
 Dianna Marlette
 Donn Martens
 Koren Mourer



Debby Mopes
 Patricio McClung
 Jackie McFarland
 Vicki McMurtrie
 Sharon McNary



Mike Mead
 Wayne Merwin
 David Mestemoker
 Carl Miller
 Down Miller



Dione Miller
 Joan Miller
 Katherine Miller
 Gerry Mills
 Mel Moreno



Paul Morris
 Ritchey Morris
 Sandy Mowery
 Susie Mowery
 David Murdock





Betty Music
Kay Myers
Katherine Neeley



Robert Neeley
Diona Noblit
Marsh Nowlin



Martin Nyhus
Steven Obenour
Howard Odum
Becky Olshansky
Jean Orrison



Billy Orwig
Chris Overly
Mary Padilla
Jim Pohl
Susan Pardo



Charles Patton
Ronald Poulson
Jim Peacock
Dole Petroff
Donald Pierce



Jackie Pombier
Barbaro Porter
Judy Prescott
Morvin Prescott
Andree Purcell

Sandra Purucker
Myranda Pytlowany
Bruce Reed
Sandy Reniger
Arvilla Ridnour



Bing Robinson
Cathy Rodgers
Ronny Rose
Jeff Ruddock
Nicholas Ruddock



Deborah Russell
Jon Russell
Carol Ryan
Karen Sachjen
Lupe Sanchez



Ricky Sanders
Russell Sands
Vicki Saylor
Richard Schieck
Debby Schroeder



Nancy Schaffer
Steve Sharp
Shirley Shepherd
Vicki Sherman
Francis Siefke



James Sill
Doug Sink
Bob Slight
Jeff Sly
Rick Smalek





Brian Smith
Chris Smith
Linda Smith
Larry Sommers
Pam Spooner



Julie Stepp
Kathy Stewert
Gail Stockman
Ilene Stout
Gary Sutherland



Pam Swan
Gary Tackett
Bruce Taylor
James Taylor
Sally Tazelaar



Auditioning for Hullabaloo?



Mary Tidey
Joan Tobalske
Larry Topp



Robert Treat
Mary Twist
Janet VanArman



Vicki VanGoetham
Cherie VanSyckle
John Vasquez

Steve Wallen
 Mary Jo Waidelich
 Stuart Webb
 John Weberling
 Carl Wheeler



Rick Wheeler
 Mike Willerick
 Gene Willis
 Lawrence Wilson
 Paula Wilson



Vicki Wilson
 Butch Wischer
 Robin Wood
 George Wright
 Meredith Wright



David Wydendorf
 Rick Zull



STUDENT COUNCIL

President Dan Stulberg
 Vice-President Sandy Redman
 Secretary Carol Saylor

SEVENTH GRADE

Mike Barnes
 Bob Bosserd
 Rosemary Elyea
 Andy Hammond
 Mike Heatherly
 Pat McClung
 Sandy Mowery
 Debbie Russell
 Jeff Sly
 Pam Swan
 Bob Treat
 Mary Twist
 Butch Wheeler
 Gene Willis

EIGHTH GRADE

Joe Belda
 Chuck Bidleman
 Debbie Cassens
 Chuck Connelly
 Jayne DeVine
 Randy Ellis
 Ernie Garza
 Greg Harrington
 Jean Leyden
 Terri Parker
 Steve Sutherland
 Joe Tucker
 Cathy Ulrich
 Mary Wynne





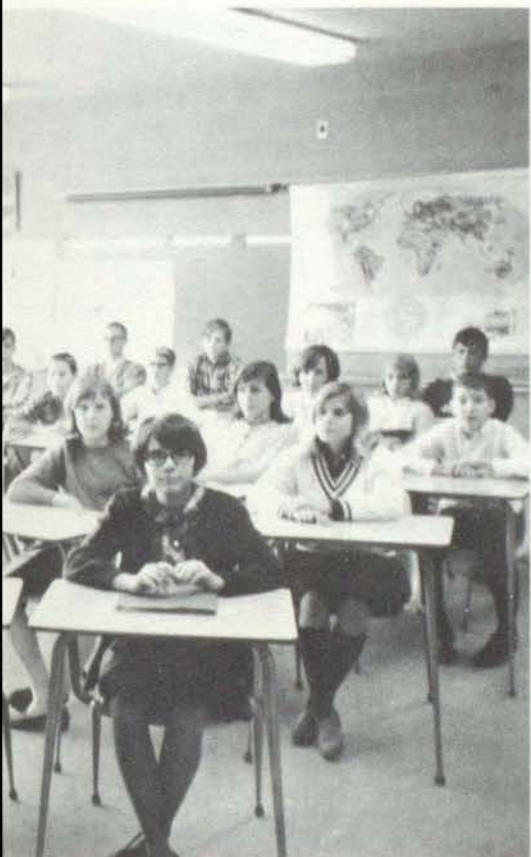
Wayne Aikens
Tom Bachman
Delores Bogi
Bob Baker
Kathy Bonfield



Lenore Bordo
David Begg
Joseph Belda
Phil Bennett
Charles Bidlemon



Down Bissett
Carol Bowers
Tom Bowler
Pot Brown
Walter Burrows



Louree Bushman
Doug Cameron
Phil Casarez



Debbie Cassens
Lindo Chaney
Becky Chapman



Sue Chapman
Cyndy Clark
Deborah Coots

Marti Collins
Charles Connelly
Jane Cook
Becky Cooper
Sally Covill



Shannon Cawles
Helen Crabill
Sue Crabill
Martha Crampton
Sheila Creech



Mike Crooks
John Cuber
Julie Darling
Leo Davidson
Chuck DeLaney



Susanne Devenney
Jayne DeVine
Doug Ditto
Clarence Dolloway



Dixie Dowding
Richard Dowding
Doris Dunn
Marvin Dunn



Cathy Dyer
Sheila Dyer
Jan Elyea
Randy Ellis





Wendy Esbough
Sue Ann Fairbanks
Dianne Faurot
Barb Fenton
Steve Fox



Mike Freds
Cheryl Fry
Margie Gage
Michele Galloway
Ernie Garza



Teresa Goheen
Donna Goodman
Sarah Goodman
Paula Goodrich
Ron Goodwin



Bruce Grable
Myra Gratz
Kathy Grodevent



Janice Groesbeck
Wayne Groth
Richard Gutierrez



Greg Harrington
Art Hecox
Tom Hess

Bruce Taylor, Sharon McNary, Sandy Mowery, John Weberling, Steve Sutherland, and Becki Cooper gather around Mrs. A's desk.

Richard Hicks
 Tony Hicks
 Sharon Hills
 Vance Hills
 Bruce Hindenach



Julie Hindenach
 Cecil Holbrook
 Tom Hopkins
 Tim Horton
 Mike Houvener



Sharon Hoyt
 Elaine Huggett
 Mary Huizenga
 Randy Hulce
 Richard Humphries



Dave Kellogg
 Ben Kelly
 Marcia King
 Richard King
 Susan King



Vicki Lautenslager
 Carolyn Lawhead
 Craig Lawrence
 Albert Lehmkuhl
 Cora Lehmkuhl



Jean Leyden
 Barb Long
 Lynn Long
 Lois Love
 Jacquelyne Luebs





Shirley Mains
Pam Martin
Debbie McNeil
David Medler
Colleen Miller



Mary Miller
Nanette Miller
Norma Miller
Kathy Morris
Cathy Moses



Michael McGillis
Cindy McKeague
Mary McLain
Becky Murphy
Allen Mutch



Nancy Nash
Victor Nobbs
Ruth Olshansky
Bob Oren
Diane Owen



Jeannie Pardoe
Terri Parker
Ellen Peacock
Nancy Peet
Terri Peters



Jerry Pettit
Janine Phillips
Clyde Pratt
Robert Ranger
Carol Rarick

Sandy Redmon
 Mike Reincke
 Gory Reniger
 Vickie Reuss
 Bruce Rivers



Volinto Robinson
 Steve Root
 Cheryl Rose
 Steve Ruddock
 Jim Sahli



Robert Saylor
 Carol Saylor
 Rodger Saylor
 Kathleen Schaberg
 Dwight Scherer



Mary Schmonske
 George Seamon
 Connie Shaffer
 Potty Shover
 Mary Shellenberger



Penny Simpson
 Carolyn Smith
 Potty Smith
 Rolph Stewert
 Barb Struble



Don Stulberg
 Judy Summerfield
 Lindo Swofford
 Dorrell Swanson
 Mary Tobolske





Joe Tucker
 Louise Tucker
 Sandy Tunning
 Kathy Ulrich
 Kirk VanderGeest



Sue Waidelich
 Keith Walters
 Cathleen Washburn
 David Weakley
 Donald Weakley



Anita Whetsel
 Gary Whittaker
 Brenda Wilkerson
 Clifford Willerick
 Ann Williams



Carol Wilson
 Conni Wireman
 John Wireman



Mark Wolf
 Tom Worde
 Pot Wright



Mary Wynne
 Wendy Yothers
 Janis Young



FRESHMEN

In this first year of high school the freshman is exposed to many new experiences: he can participate in many new activities and is allowed to make independent decisions for the first time. At first the "frosch" may be overwhelmed by these new freedoms and privileges, but he soon accepts them as part of becoming an adult. With their goals set high, they begin to take part in athletics, dances, clubs, and the other school functions that make up the high school world.



John Aalbregste
 Mike Albaugh
 Barb Albrecht
 Jill Alexander
 Gerald Allen



Judy Allen
 Jim Anderson
 Kay Anderson
 Kate Bailey
 Donna Baklund



Gary Baklund
 Jack Ballard
 Vera Barstch
 Marty Berezonsky
 Rebecca Bischoff



Darlene Bissett
 Jean Blakeslee
 Joan Blakeslee
 Duane Blevins



Bruce Bosserd
 Allan Boughton
 Linda Bowers
 Etha Bradley



Mark Bradley
 Gary Brininstool
 A. Clarence Brow
 Carlene Burlingan





Arlene Burnett
 Ellen Burns
 Terry Buskirk
 David Cairns
 P. Sue Caldwell



Mary Carr
 Sharon Carr
 Jori Carver
 Geraldine Caudill
 Claudio Coates



Sharon Coffman
 Cynthia Collins
 James Connelly
 Joanne Cook
 Kathy Copland



Mary Cox
 Betty Crapo
 Robert Currie



Penny Dolly
 Martha Demming
 Jeri DeVine



Rosemary DeWitt
 Jeanne DeWolfe
 Chris Dillon



Freshman class officers and sponsors (front to back):
 Bob Curry, president; Brenda Saylor, secretary; Dale
 Gilger, vice-president; Mrs. Hansen and Mr. Shufelt.



Martin Doolittle
 Alice Duttlinger
 Lindo Duttlinger
 Sandi Eagle
 Ilene Easler



Debra Eoslick
 Kathie Eyre
 Roland Former
 Eugene Fitzpatrick
 Debra Flynn



L. Sue Flynn
 Cindy Foster
 Janet Foster
 Bernd Freiny
 Jill Getty



Dole Gilger
 Winston Glenn
 Jacob Good



David Goodman
 Pot Goodman
 Anita Gordier



Lindo Grable
 Rita Holbert
 James Hall



Ronnie Hall
 Mike Hamaker
 Marilyn Hamilton

Dave Harrington
Ruth Harris
Sarah Hart



Terry Hartle
Cynthia Hastings
Cindy Hayes



Anna Hazel
Larry Hazel
Timothy Hazel



Henry Heater
Judy Hendrickson
Jane Hileman
Barbara Hindenach
Jeffrey Hoeltzel



R. Kathy Holliday
Linda Howard
Pat Howard
Cynthia Huggett
Chris Hughes



Sylvia Humphrey
Gary Hurlbert
Kay Hurley
Barb Hutchins
Julia Hutchins



John Jackson
Alice Jenkins
Donald Jenkins
Helen Jenkins
Bob Jenings



Marsha Jessick
 Jesse Jimenez
 Nick Jimenez
 David Keiper



Chris Kellogg
 Steve Kelly
 Sheryl Kibler
 Chris Kincaid



Allan Kozoil
 Jean Laing
 John Langan
 Marilyn Laupp
 Bruce Lautenslager



Sharon Leahey
 Suzanne Lee
 Chris LeFever
 Bob Lewis
 Tom Lockyer

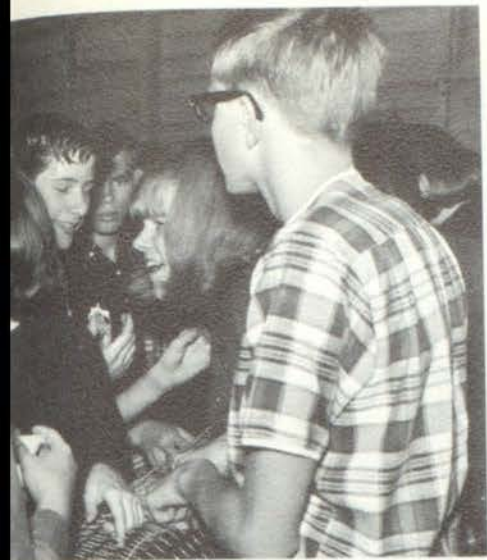


Dave Long
 Joyce Lortz
 Harold Luebs
 Linda Maddox
 Kathleen Mains



Ken Maisner
 Roger Maisner
 Doug Mathewson
 Donnella Maurer
 Danny McMillen





Karol McNary
Dan Metzger
Debbie Miller



Sue Miller
Kenneth Mix
Virginia Morell



Eleanor Morgan
Sherry Morse
Bruce Murphy
Lawrence Nail
Ella Nobbs



Nancy Noreyko
Diane O'Leary
Debora Olinyk
John Orrison
Glenna Orwig



Laura Patton
Brenda Perkins
Barbara Phillips
Jan Piper
Debbie Quigley



Dave Rapp
Robert Reizner
Bruce Reingery
David Rentschler
Marla Reynolds

John Rodgers
 Rodno Rudolph
 David Russell
 Kathy Ryan
 Barbara Samson



Jim Sanders
 James Sarver
 Stephen Sayers
 Brenda Saylor
 Dan Schnaitman



Tom Schneider
 James Scovie
 Connie Shaw
 Phyllis Sheldon
 Jeff Sherman



Mary Shepherd
 Mike Shreve
 Pat Sill
 Paula Simmons
 Darrell Simpkins



Kathy Simpson
 Mildred Slone
 Bill Smith
 Debbie Smith
 John Smith



Patricio Spees
 Doug Spooner
 Linda Steinkirchner
 Janice Stepp
 Danny Stevens





Clair Stevens
Gail Stevens
Diana Stout
Cheryl Streb
Donald Sundberg



Beverly Swan
Sharon Tackett
Robert Taylor
Ronald Thomas
Rose Thompke



Lindo Tidey
Debbie Tolan
Lament Topp
Joan Tropp
Debbie Tunning



Patsy VanDever
Judy VanMeter
Barbara VanZandt



Joyce VanZandt
Carol Wollen
Donny Wollen



Donna Wolter
Charles Washburn
Gary Waters

Dougless Webb
Sherry Weers
James West



Marianne Weybourne
Robert Wheeler
Mike Whittaker



Clara Willerick
Danny Willerick
Sandra Willerick
Jim Williams



Howard Willis
JoAnne Womack
Jim Wright
Cathy Wuolle
Dennis Wydendorf



George Yaudes
Mike Yost
Jim Youngdahl
Jerry Holt
Floyd Levenfeld



FRESHMAN CANDIDS



Mike Albaugh in one of his better moods.



"Here comes Raggedy Ann," shouts Ellen Burns.



Jan Piper, Jim Anderson, and Linda Maddox appear happy upon leaving their class.

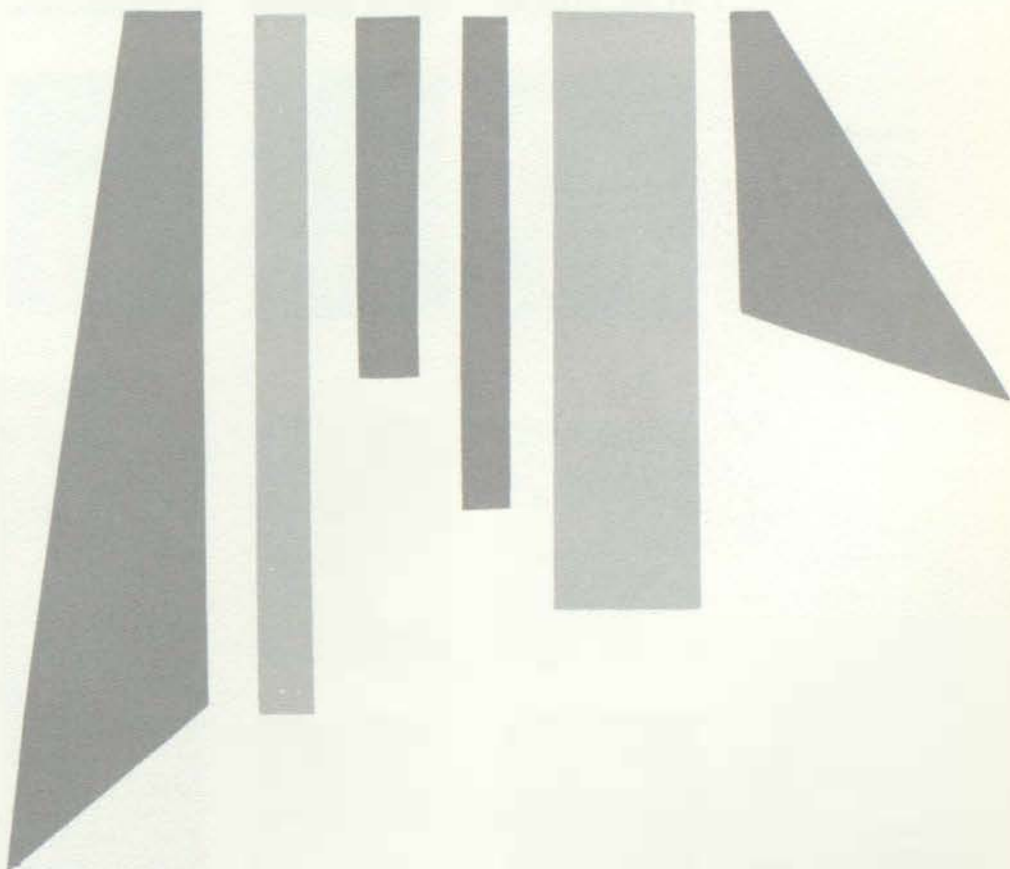
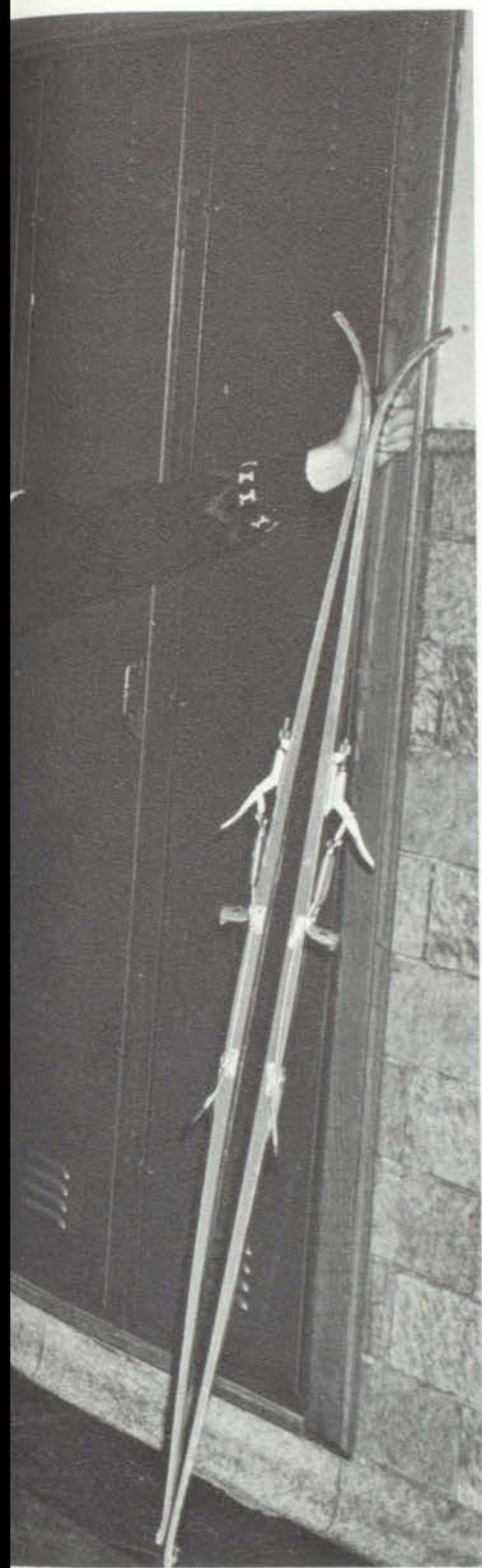


R-R-Rip-p-p



SOPHOMORES

Sophomores launched into their second year of high school with much enthusiasm and continued their efforts to make profits for their class treasury. Most of the profits came from working on the "Puff Ball" at the athletic games during the football season. In the spring they chose their class rings, and began thinking of the excitement that would come with their junior year.



Geoffrey Alderson
 Gail Alexander
 Lewis Atley
 Donn Bagi
 Larry Baker



Larry Bales
 Norma Banfield
 Tim Banfield
 Cindy Barnes
 Gail Barnes



Alfred Beattie
 Barbara Benemar
 Gardy Berezondky
 Bruce Bicknell
 Tom Blanchard



Jancie Blauvelt
 Bill Bossard
 Cathy Bowers
 Jerry Bowman
 Hope Boyer



Jean Brannon
 Nora Brown



Dave Buskirk
 Tom Buys





Gary Cantwell
 Bob Capman
 Bob Carlisle
 John Carver
 Emma Cosarez



Julie Chapman
 Kathy Chapman
 Martha Chapman
 Leo Chichester
 Sharon Chisholm



Gary Church
 Kathy Clark
 Michael Clark
 Anne Clee
 Steve Coats



Doug Colburg
 Heidi Connelly
 Craig Conrath
 Bart Cook
 James Corrigan



Pat Covill
 Gerald Crapo
 James Crumrine
 Jeff Cuzzins
 Sharon Dakar



Kathy De Forest
 Larry Devenny
 Henry Didier
 Debra Dowding
 Don Dowding



Theresa Dubendorf
 Marsha Eosh
 Glendo Eostobrook
 Judy Ekdahl
 Janet Ellis



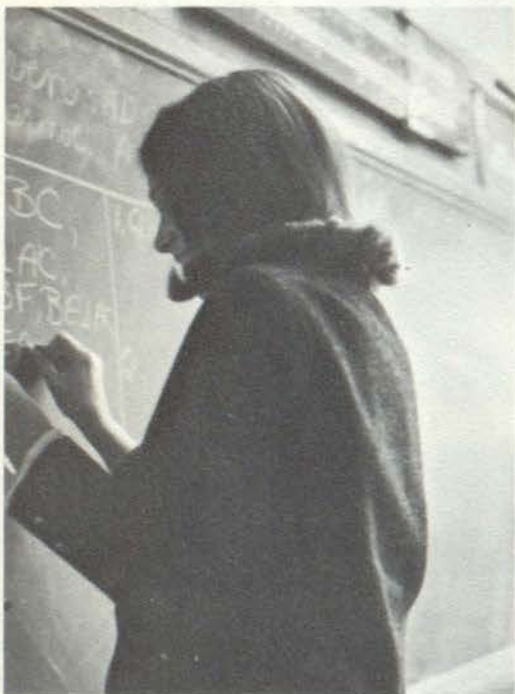
Robert Engblom
 Jim English
 William Eyer
 Joyce Fairbanks
 Lindo Faurot



Mary Fedak
 Tiffany Fliss
 Tim Flynn
 Dole Fountain
 Alvin Fox



Herold Francisco
 Deborah Freer
 Pot Galloway
 Marilyn Gord



Audrey Gillett
 Alice Goodman
 Chris Graichen



Russell Gullett
 Roger Hagerty
 Dennis Hall



Joe Hall
 Lynn Hammond
 James Hankey

Sue Hartman
Jerry Hazel
Vicki Heater



Dorothy Heath
David Heatherly
Nancy Heckman



Fred Hecox
Pamela Hess
Brian Hice



William Hileman
Rebecca Hindenach
Sheri Hindenfelter



Patrica Hixon
Jon Hobson
Van Hoffman
Dale Hopkins
Charlotte Howard



Bruce Hupenbecker
David Hughes
Ken Hughes
David Kaser
Michael Kedo



Narma Keiper
Margo Knapp
Christina Kuschman
Gary Lake
Donna LaPoint



Wendy Laupp
 Bruce Leach
 Ann Leyden
 Frank Line
 Ross Lipsey



Chuck Livingston
 Richard Lockyer
 Linda Long
 Linda Mahrle
 Kathleen Maisner



David Mann
 Mary Marshall
 Leslie Martens
 Bob Martin
 Susan McClay



Sylvia McKeague
 Robert Merwin
 Linda Miller
 Mary Miller



Gerald Mix
 John Monje
 David Morgan
 Jeanne Mosier



Dianne Mussleman
 James Nail
 Cynthia O'Leary
 John Olshansky
 Sue Oren





Jim Pardoe
Linda Peace
Larry Peck
Ricka Phillips
John Powers



Michael Pratley
Marie Pratt
Rodney Puff
Warren Purdy
Bianka Pytlowany



Syrenada Pytlowany
Rudy Ramos
Dorothy Ratliff
Steven Redmon
Terry Reniger



Linda Reuss
Tim Rewa
Katrina Reynolds



Doug Richard
Susan Richardson
Karl Riegle



Bruce Reiser
Dave Rogers
Nancy Rouse

Nancy Rushford
 Lee Russell
 Gary Sawyer
 Linda Schaberg



Steve Scheick
 Thomas Schroeder
 Del Sears
 Terry Seitler



Luce Serbantez
 Arthur Sexton
 Jannis Shaver
 Lona Shav.
 Omev Lee Shepherd



Gilbert Sherman
 John Sherwood
 Ruth Simmons
 Kristy Slight
 Dano Smith



Kathy Smith
 Dave Soebbing
 David Stevens
 Haroldene Stratton
 Merlin Struble



Irving Stulberg
 Tom Summerfield
 Robie Sutherland
 Shirley Swan
 Sherl Swanson





Pete Tazelaar
Tom Thompke
Tom Thompson
Judy Trapp
Terri Trupiano



Allison Twist
Brian Udell
Gail VandyBogurt
Helen Vincent
Tom Waidelich



Shelly Walters
Kent Weiderman
Charles Werthman
Peggy West
Vic Willerick



Steve Williamson
Gloria Wilson
Peggy Wilson
Mari Winsor
Rebecca Winte



Laura Withee
Richard Wirtz
Glen Womack
Tom Wood
Linda Wright



Vicky Wuolle
Ann Wyndham
Jim Wynne
Winona Yothers
Steven Young



Remember when . . . ?



Sophomores working hard on the GAA Formal.

Class sponsor, Mr. Davis, with Tim Banfield, president, and Dale Hopkins, vice-president.





The sophomores were active in the 1965 Student Council elections.

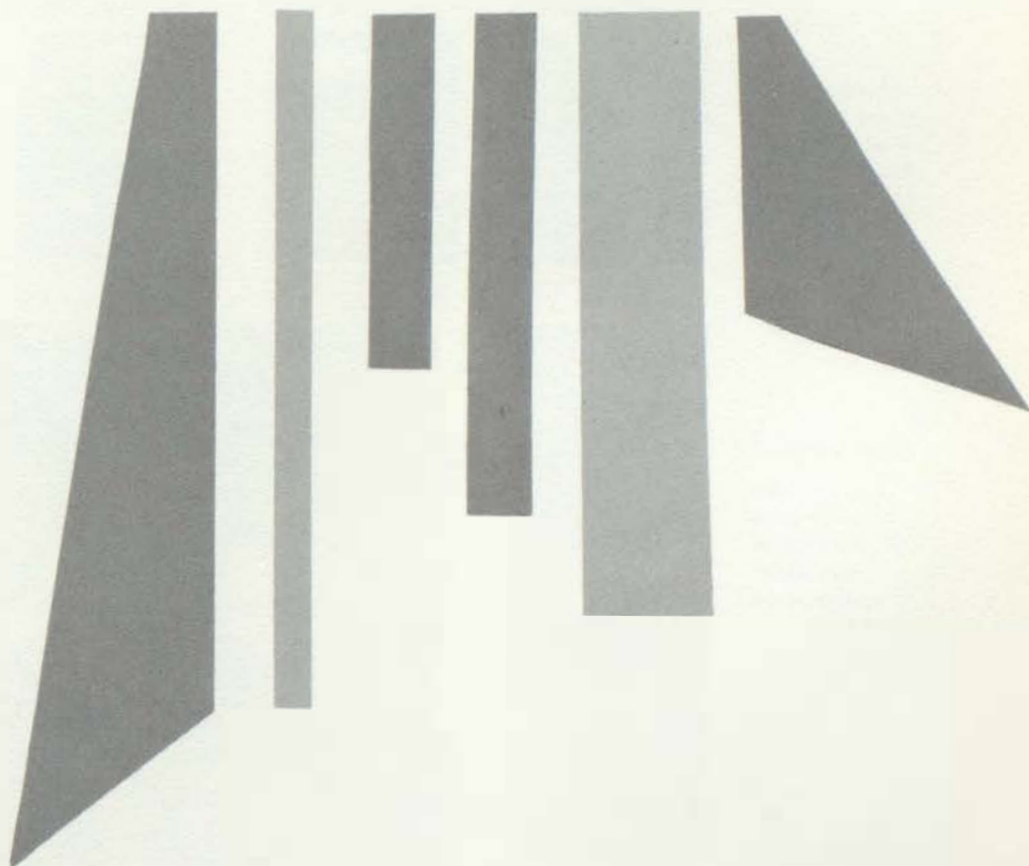
Sophomores take first place with their winning float.





JUNIORS

The junior year in high school is one filled with many activities. In order to increase their class treasury, a magazine sale is held. In February, with great enthusiasm, they put on their first class play, "Charley's Aunt." With the money earned from these ventures they present the annual J-Hop for the seniors in the spring.



Mary Ansell
Tom Atkins
Marianne Bagley
David Bailey
Bill Boker



Joyce Boklund
Brett Bordo
Roland Bossage
Helen Bostian
Pot Behling



Carl Bennett
Duane Bennett
Valda Blair
Steve Bonnell
Gerrald Bossard



James Bosserd
Donna Bradley
Jane† Brininstool
Russell Bukoski
Terry Camp



Donna Copmon



Mary Cosey





Joanne Chene
Dick Clayborn
Joe Codde
Miles Coffman
Mario Collins



Pat Conely
Carolyn Cooper
Robert Corrigan
Susie Covill
Jo Crondall



Sue Crapo
Judy Cruse
Carol Curren
Dennis Dally
Molly Daker



Dorlene Damon
John Davies
Chris Dean
Steve DeForest
Cathy DeLaney



Delores DeLaney
Doug DeVine
Beverly Deyo
Valerie Deyo
Harold Dickson



Cheryl Dryer
James Duttlinger
Pamela Eagle
Ellen Eckloff

Sharon Former
Rick Fedak
Lynn Fenton
Dennis Flynn



Curtis Francisco
Mark Gilger
John Gladstone
Lynn Glenn



Mark Goheen
Penny Good
Brenda Goodman
Geraldine Goodman



Annette Gordier
Glen Gray
Michon Green
Allen Greenman



Gory Gullett
Carmen Gwin
Jeanne Hamilton
Cheryl Harris



Marilyn Horruff
Rose Hartung
Darlene Hawkins
Raymond Hawks





Ron Hayes
Gary Heidrich
Elaine Herman



Linda Hicks
Karen Hoetzel
Ken Holmes



Bob Hookway
Gary Hoover
Peggy Horton
Karen Howard
Russell Howard



Betsy Huggett
Janice Huggett
Peggy Jennings
Don Kellogg
Margaret Kellogg



Merrie Knapp
Delores Kornoely
Barbara Koxiol
Phillip Lake
Jim LaForge



Gloria Lapham
Barbara Leach
Colleen Lightfoot
Richard Livingston

LaVonne Lons
 Janice Lux
 Vincent Mains
 John Martin
 Fred Matthews



Gloria Matthews
 Sandi McKelvey
 Marsha McNeil
 John Metzger
 Dan Meza



Doris Monette
 Pat Moreland
 Jeff Morris
 Ann Mosier
 Nancy Mutch



Janet Myers
 John Nash
 Dennis Nelson
 Ken Nichols



Diane Nobbs
 Alice Noble
 Judy Noreyko
 Jerry Nye



Lauren O'Melay
 Cindy Oren





Bruce Owen
David Peck
Dione Peck
Jeanne Peet
Cheryl Phillips



Janet Powers
Gary Proet
Lindo Pratt
Russel Pryor
Robert Ropp



Jim Reagle
David Reed
Tom Rewa
Randy Riser
Steve Rogers



Sondra Rudolph
Jill Russel
Rory Russell



Steve Russell
Cynthia Rutherford
Margaret Samson



Terry Saylor
Douglas Scherer
Mike Scherer

Junior Class officers were: Judy Noreyko, Secretary-Treasurer; Helen Bostian, President; and Cindy Rutherford, Vice President. Standing are advisors Mrs. Storr and Mr. Avery.



Roger Scherer
John Schneider
Pat Schnitzler
Marilyn Shreve
Michael Schroeder



Jim Shepherd
Sandra Simmons
Marsha Slaughter
Randy Sly
Deanna Smith



Marv Smith
Roger Smith
Walter Smith
Carol Soebbing
Steve Spooner



Jim Stout
Sara Stout
John Strough



"What kind of a Meza did I get myself into?"



Elaine Stuart
Brenda Swan
Joe Sweeter



Dave Tackett
Barbara Tanner
John T'Benske



Bob Thick
Carol Thomas
Dick Thomas

Eugene Tucker
 Renee Tucker
 Tom Tucker



Pam Ulrich
 Dixie Van Winkle
 Jane Vaughn



Kathy Vaughn
 Linda Velliquette
 Mary Waggott
 Frank Wallen
 Jim Walters



Marlin Warren
 Don Warsop
 Jeanne Wass
 Larry Weers
 Sandy Weers



Tony Widemon
 John Williams
 Mary Willis
 Denis Wilson
 Stephanie Winters



Vickie Wiser
 Kathleen Wolf
 Darlene Wood
 Dave Woods
 Danny Wright



Lynette Young
 Kathy Zasucha
 Pat Zink



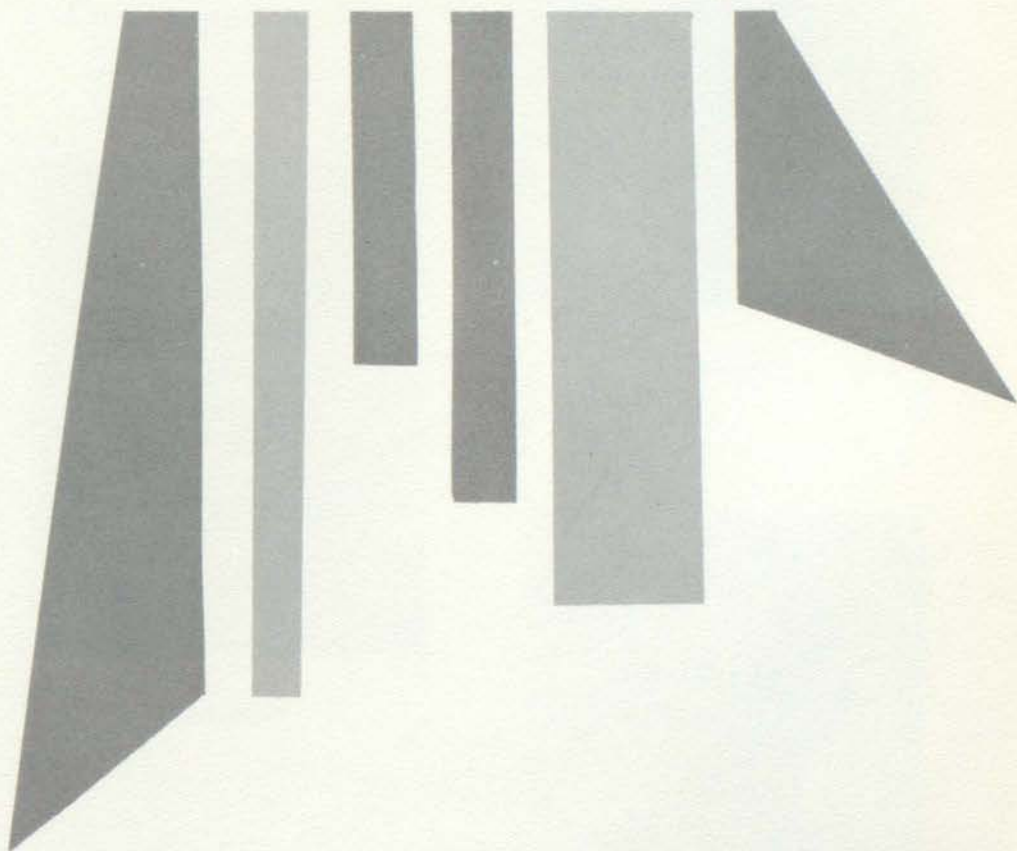


SENIORS

Graduating from high school is the goal that all students strive to attain as they begin their growth from novice freshmen into confident seniors. However, graduation signifies more than just the attainment of a goal; it represents the end of a period of worthwhile study and achievement and a beginning of a new adventure in life.

Behind are the fond memories of grade school, junior high, and high school. Ahead are numerous decisions that will affect our lives and the lives of those around us.

High school life is a part of the past . . . Remember it well . . .



Honored



David Walters



Charlotte Whitney



Thomas Bischoff



Patricia Wilson



Phoebe Reese

Chosen by a faculty committee, these members of the senior class were selected on a basis of academic achievement and character. These five girls and seven boys possess the above mentioned



Michael Lowden

Seniors



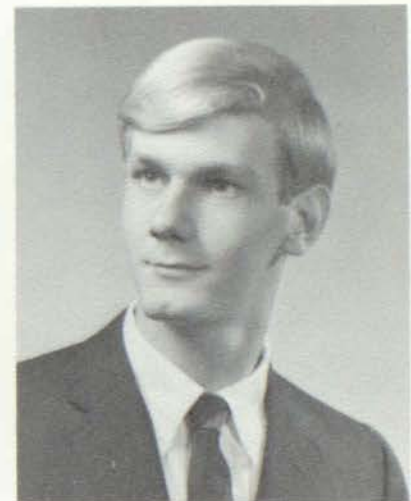
Thomas Coats



John Twist



Audrea Winters



John Begg

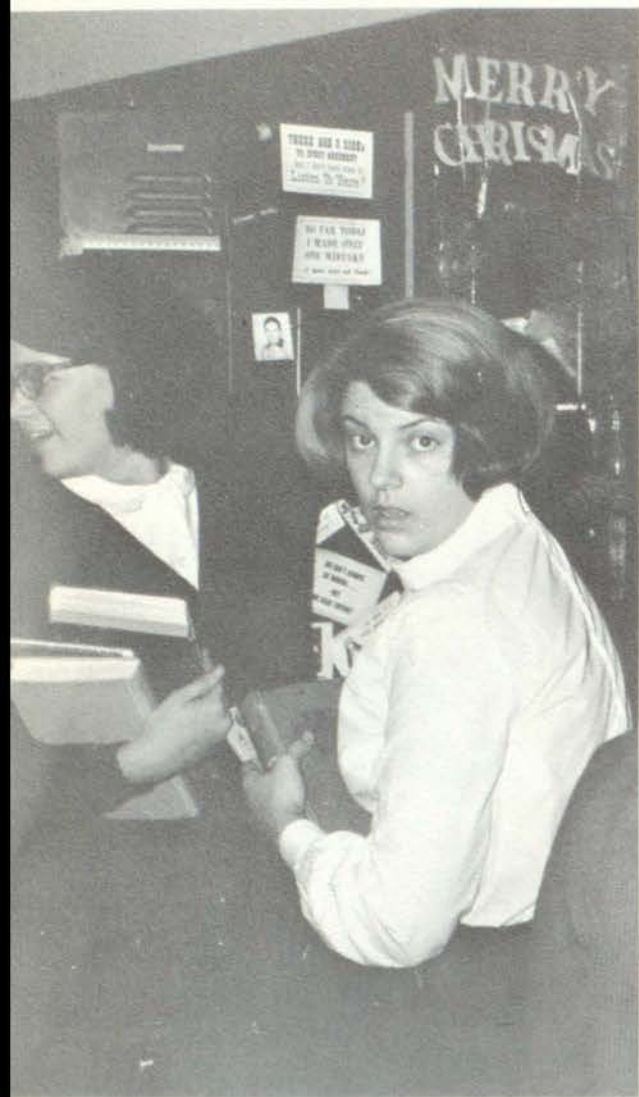


Diana Dunn



Alan Stulburg

qualities. As the faculty committee is proud to honor them, we, their friends and classmates, present them on these pages.



"It's not my fault I'm the editor!"



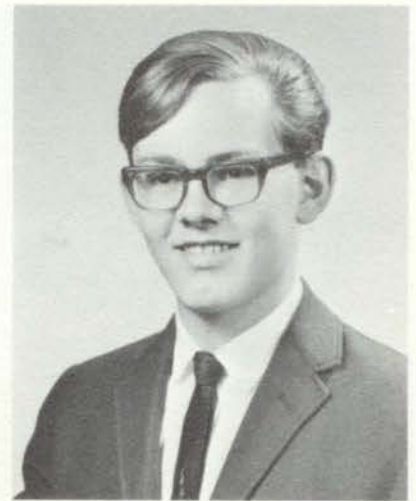
Donna Marie Adams



Loisrae Adams



Richard Albaugh



William Albrecht



John Alexander



Susan V. Alexander



Bo E. Alftenius



Christina Marie Allen



David Anderson



Kathi S. Anderson



William R. Ansell



Gary Robert Armstrong



Majorie J. Askin



Patricia Lynn Babcock



David Bagi



Myron Banfield



Shirley Barber



The mighty Redskin team displays its



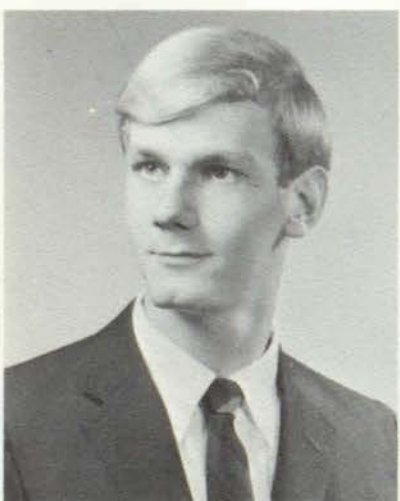
Delia Barroso



Thomas T. Bayley



Mario Becerra



John R. Begg



Suzette Belcher



James V. Bicknell



usual "enthusiasm" at a typical pep assembly.



Thomas L. Bischoff



Joseph W. Bisel



Steve Blue



Sharon Bock



Terry Lee Bonnell



Joseph Boruszewski



Sally Rene Bottoff



Jane C. Boyd



Brion Burns



Eva Catherine Buskirk



Judy Elaine Coldwell



Yvonne Marie Carr



Thomas Paul Carroll



Paul L. Caywood



Susan Dale Chapman



Suzanne Chene



Maynard L. Clark, Jr.



Bob Clayborn



Jeffrey Clee



Thomas R. Coates



Barbara S. Collins



Larry Collins



Priscilla A. Conley



Cherie Connelly



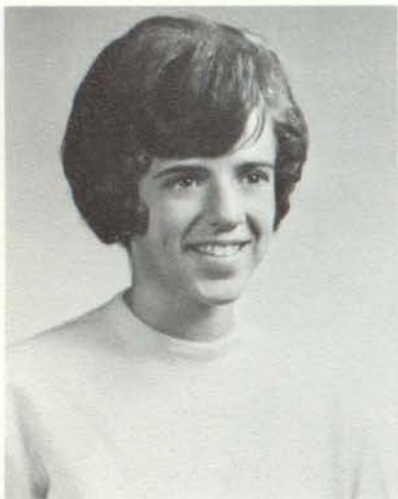
Charles Bruce Cook



Darrell Cook



Senior class officers were Larry Taylor, President; Vice President. Sponsors were Mr. Wuori and Mrs.



Martha Louise Cooper



Mary Costa



Harry Crandall, Jr.



Carol Sue Crumrine



Clara Lee Cruse



Lavina Jo Cushman



Beth Waidelich, Secretary; and Tom Bischoff, Neuman.



David Thomas Daker



Kenneth C. Dally



Carol Ann Damon



Kathleen J. Darling



Sharon Kay Deon



Teddy V. DeForest



John M. Devenney



Lee Ann Dolloway



Diana Dunn



Sandra R. Dunn



Christine E. Eiler



Dorothy K. Eisenhauer



Dawn (Coates) Ekdahl



Jeanette Elyea



Patricia J. Elyea



Harold Engelter



Joan C. Erskine



Jeannette Yvonne Farmer



Newell Fousz



Ralph Fitch



Mary Fitzpatrick



Pete Flynn



Jeffrey W. Fountain



Carol Anne Fruin



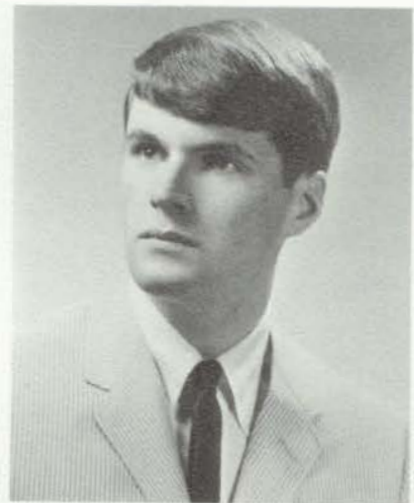
The Senior float for the



Gerie Fruin



Sandra Kay Fry



Michael Galloway



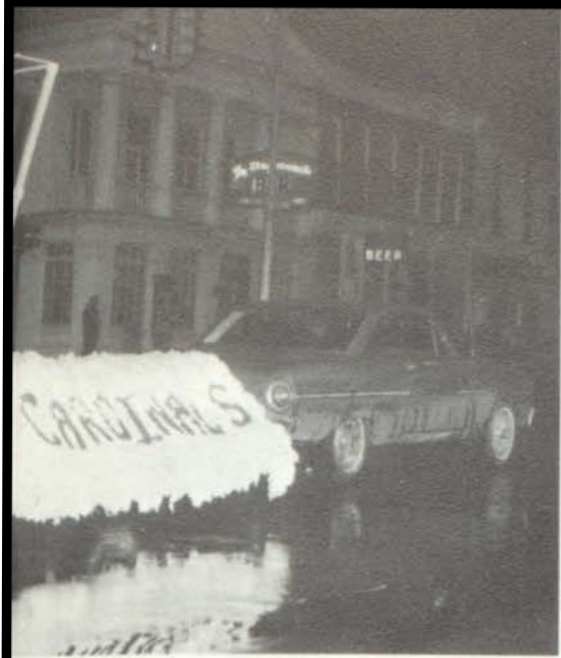
Merlene K. Getty



James Hoyt Gladstone



Dianne Glaza



1965 Homecoming Game.



Lawrence L. Goodwin



James S. Gordier



Julia Maude Grimm



Karen Gustafson



David A. Hagerty



Jonell Hall



Britta Hansen



Mary Lou Harris



William John Hortman



Sharon Dione Hayes



Raul Herrero



Donald W. Hindenoch



Gory A. Hockett



Jean Marie Hodges



Byron M. Hoffman



John M. Holt



Robert L. Hopkins



Ruth (Shippell) Howell



Joetta Kaye Humphries



John Johnson



Donna Karns



Leslie Kincaid



Richard A. King



Bernita Ann Kornoely



Karlene Rene Kraushaar



Kathy Ann Kraushaar



Sue E. Kunzl



James E. Laing



Why does it always seem that



Kent L. Lake



Carol Langan



Lee E. Lapham



David E. Laupp



Kathleen Ruth Leach



the seniors are first in line?



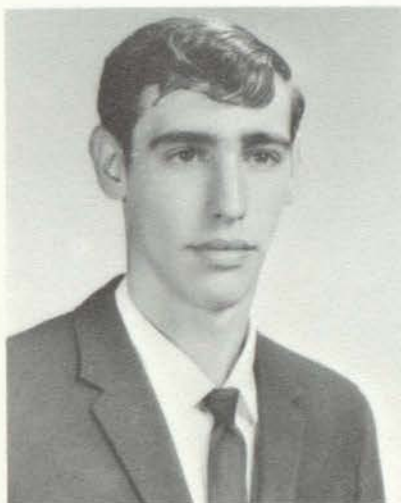
Kay Ellen Leach



Andrew W. Levenfeld



Linda Janene Lewis



Gary R. Lewis



Daniel L. Livingston



Jerry N. Maisner



Michael Kenneth Lowder



Larry Maisner



Suzanne Kay Marlette



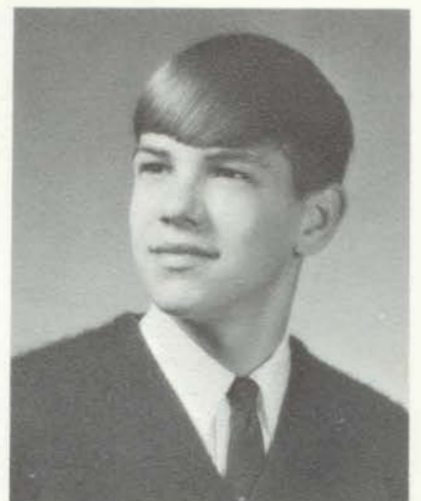
Gerald Marshall



Mary Cheryl McFarland



Phillip L. McKelvey



Gary L. McMurtrie



Claude A. McMillen



Richard A. Merritt



Paul A. Mestemaker



Thomas Charles Metzger



Hanna Marie Meyer



Robert Lee Meyer



Jane E. Miller



Jon L. Miller



Steve L. Miller



Nancy Jane Monje



Don't get carried away with all those buttons!



Gary H. Morey



Donna Jean Morse



Our representatives to Wolverine Boys' State
Johnson, and Tom Metager.



Ann H. Moses



Mark C. Mosier



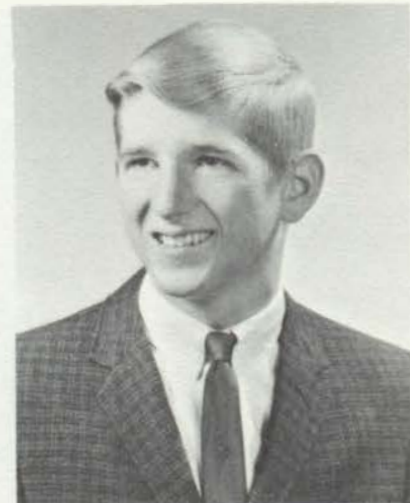
Marjorie Music



Linda Nail



Alan B. O'Leary



Jahn Orns



were Phil McKelvey, Tom Bischoff, John



Margaret A. Overley



Della Jean Owens



Mark Patton



Susan Paul



Duane Peace



James Eugene Peck



Christine Pedersen



Karen Peet



Tom Pemberton



Kay Lorraine Petch



Paula Ann Peters



L. Gene Pettit



Christine Piper



Mary C. Poe



Vickie Rae Potter



Dell Emmett Powers



Anton R. Presecan



Steve Purdy



John A. Ramos



Darlene E. Rapp



Sharon Rapp



Kara J. Reagle



Phoebe Jean Reese



Jill Lynn Rocco



Caren M. Rose



Do Diana and Dave



Gail (Willerick) Rowe



Dennis A. Rugg



Timothy W. Samson



Terry L. Scheick



158 Harold W. Schmidt



Thomas E. Schnaitman



ever shut their mouths?



Kathy Ann Schroeder



Mary Sharp



Joseph C. Shippell



Roger G. Shreve



Vickie Lynn Shreve



Skip Siefke



Curtis Simmons



They call it grace!



Linda Jane Simmons



Greg Slight



Michael Smith



Tal Smith



James Stadfeld



Larry L. Stevens



Barb Stinson



Bruce Stuart



Deborah Stuart



Alan Jay Stulberg



Larry Taylor



Denny Thomas



Phillip Thompke



Carol Lynne Thyer



The seniors at the top!



Diana Lee Tolan



Catherine Anne Trupiano



What's Ellen doing



Jerry L. Tucker



John H. Twist



C. Amy VanDenberg



Mary Angela VanNess



William VanNess



Cynthia D. VanSyckle



Larry D. VanSyckle



Terri L. VanZandt

with the seniors?



Beth A. Waidelich



Linda Sue Wallen



David Kenneth Walters



Doris Walters



John Walters



Patricia Lee Warman



Gail E. Warsop



Ken Washburn



Lawrence J. Waters



Dennis Ray Weers



Brenda Kay Wheeler



Denny Wheeler



Charlotte Ellen Whitney



Pamela B. Williams



Linda M. Willison



Mike Williston



Patricia Wilson



Sheryl Lynn Wilson



Darwin Winchell



Andrea Lee Winters



Ron E. Wolf



Kathy (Woods) Faurot



Pholo Wright



Margie Lynn Youdes



Ronald A. Yost



Jon Youngdahl



Thomas E. Zerbel



Michael E. Zingrege



Penny Ann Zimmerman

CAMERA SHY

Barbara Calahan
 Danny Clark
 Terri Crooks
 Phillip Goodman
 Judy Marie Hastings
 Dennis Hughes
 Mary E. Jimenez
 Michael King
 James Laing
 Sandra Lautenslager

William J. Launtzenheiser
 Joe Libbrecht
 Mary Mathews
 Ruth Mathews
 Bill Medler
 Mike Miller
 Terry Sievers
 Carol Smith
 Robert Ulrich
 Don Weberling

SENIOR DIRECTORY

DONNA MARIE ADAMS
GAA—1,4
LOISRAE ADAMS
Biology Club—2,3
FHA—4
French Club—1,2
GAA—1,3
Junior Play Crew
Political Club—4
Senior Play Crew
RICHARD ALBAUGH
Choir—3
Latin Club—2
Marshall Singers—4
Senior Play Cast
WILLIAM ALBRECHT
All School Musical—3
Choreographer
Biology Club—2
French Club—2,3,4
Junior Play Crew
Political Club—3,4
Red Squire Staff—4
Business Manager
JOHN ALEXANDER
FFA—1,2
Political Club—4
Spanish Club—2,3
SUSAN V. ALEXANDER
FHA—2,3,4
Treasurer—4
Secretary—4
GAA—1,2
Junior Play Crew
Language Club—1,2
Pep Club—2,4
Secretarial Club—4
Senior Play Crew
Usher Club—3,4
BO E. ALFTENIUS
Band—4
Dicken's Carolers—4
Orchestra—4
Pep Club—4
Political Club—4
CHRISTINA MARIE ALLEN
All School Musical—1,3
Amateur Show Crew—2
Biology Club—2,3
FHA—1,2
GAA—1,2
Junior Play Crew
Latin Club—2
Marshall Singers—3,4
Pep Club—2
Political Club—4
Senior Play Crew
Volunteers—3,4
DAVID ANDERSON
KATHI S. ANDERSON
Band—1,2
GAA—1,2
Secretarial Club—4
WILLIAM R. ANSELL
Co-op—4
Football—1
GARY ROBERT ARMSTRONG
MARJORIE J. ASKIN
FHA—1
French Club—2
PATRICIA LYNN BABCOCK
Bible Club—4
Junior Play Cast
Senior Play Crew
DAVID BAGI
MYRON BANFIELD
SHIRLEY BARBER
GAA—1,2,3
Junior Play Cast
Language Club—2
Student Council—1
DELIA BARROSO
Choir—1,3,4
Spanish Club—3

THOMAS T. BAYLEY
Baseball—1
Football—1,2,3
Golf—1
MARIO BECERRA
Basketball—1,2
Football—2
Track—1,2
JOHN R. BEGG
Debate—1,2,3,4
Football—1
Junior Play Crew
Language Club—1
Latin Club—2,3,4
President—2
Musical Cast—3
Political Club—2,3,4
Republican Chairman—3,4
Red Squire—4
Editor
Senior Play Cast
Student Council—1,2,3,4
President—3
Parliamentarian—4
Tennis—2,3,4
SUZETTE BELCHER
Choir—2
Dial Staff—4
French Club—2
GAA—1,2,3
Girl's Glee Club—3
Junior Play Crew
Language Club—1
Orchestra—1,2,3,4
Pep Club—1,2,3,4
Volunteers—4
JAMES V. BICKNELL
Biology Club—2
Football—1,3
French Club—2
Latin Club—1,2,3,4
Political Club—4
THOMAS L. BISCHOFF
Biology Club—2,3
Dial Staff—4
Business Manager
Football—1,2,3,4
Junior Play Cast
Junior Rotarian
Political Club—4
Student Council—4
Senior Class Vice President
Track—2,3,4
Varsity Club—4
Wolverine Boys' State
JOSEPH W. BISEL
FFA—1,2,3,4
Vice President—3
President—4
STEVE BLUE
FFA—1
Football—1,2
SHARON BOCK
Biology Club—1
Choir—2,3,4
Junior Play Cast
Library Club—2
Senior Play Cast
TERRY LEE BONNELL
FFA—1,2,3,4
JOSEPH BORUSZEWSKI
Biology Club—2
Football—1
Language Club—2
Latin Club—3
SALLY RENE BOTTOFF
Biology Club—2,3
Dial Staff—4
GAA—1,2,3,4
Junior Play Crew
Pep Club—1
Secretarial Club—3,4
Senior Play Crew

JANE BOYD
Cheerleader—4
French Club—3,4
GAA—1,2,3
Junior Play Crew
Language Club—1,2
Pep Club—4
Usher Club—2,3,4
BRIAN DOUGLAS BURNS
All School Musical—3
Publicity Chairman
Tickets Chairman
Dial Staff—4
Copy Editor
Junior Play Cast
Language Club—1
Latin Club—2
Political Club—3,4
Senior Play Cast
Spanish Club—3
Student Council—1,3,4
Committee Chairman—3,4
Freshman Class Vice President
EVA CATHERINE BUSKIRK
Bible Club—4
Library Club—4
BARBARA CALAHAN
JUDY ELAINE CALDWELL
YVONNE MARIE CARR
Cheerleader—1,2,3,4
GAA—1,2
Homecoming Court—2,4
Latin Club—1,2,3
THOMAS PAUL CARROLL
Band—1,2,3
Co-op—4
Vice President
Orchestra—1,2
Pep Band—1,2,3
PAUL L. CAYWOOD
French Club—1,2
Political Club—3,4
Senior Band—2,3
Senior Play Cast
SUSAN DALE CHAPMAN
All School Musical—Crew—2,3
GAA—1
Freshman Representative
Homecoming Court—1,3,4
Latin Club—1
Marshall Singers—2,3,4
Pep Club—1
SUZANNE CHENE
DANNY CLARK
Football—1
MAYNARD L. CLARK, JR.
Baseball—3,4
Cross Country—3,4
Red Squire—4
Sports Editor
Track—3,4
Varsity Club—3,4
BOB CLAYBORN
Basketball—1
Football—1,2,3
Golf—3,4
JEFFREY CLEE
Art Club—4
Co-op—4
President—4
Football—3
THOMAS R. COATES
All School Musical—1,2,3
Junior Play Crew
Marshall Singers—4
Orchestra—1,2
Senior Band—1,2,3,4
Drum Major—1,2,3,4
Senior Play Crew
BARBARA S. COLLINS
Art Club—3,4
Bible Club—2,3,4
Biology Club—1,2,3
French Club—2,3

GAA—1,2,3,4
 Junior Play Crew
 Political Club—4
 Senior Play Crew
 LARRY COLLINS
 PRISCILLA A. CONLEY
 Bible Club—1
 Co-op—4
 CHERIE CONNELLY
 Art Club—2
 Dial Staff—4
 GAA—1,2
 Junior Play Cast
 Latin Club—1,2
 Pep Club—1
 Political Club—4
 Student Council—2
 CHARLES BRUCE COOK
 Basketball—1,2,3,4
 Football—1
 Junior Rotarian
 Latin Club—2,3
 Political Club—4
 Student Council—3,4
 Junior Class Vice President
 Tennis—1,2,3,4
 Varsity Club—2,3,4
 President—4
 DARRELL COOK
 FFA—1,2,3
 Football—3
 MARTHA LOUISE COOPER
 Cheerleader—4
 Dial Staff—4
 French Club—3,4
 GAA—1,2,3,4
 Junior Play Cast
 Language Club—1
 Latin Club—2
 Pep Club—4
 Political Club—4
 Senior Play Cast
 Student Council—1
 Usher Club—2,3,4
 MARY COSTA
 Amateur Show—2
 Choir—1,2
 Co-op—4
 FHA—1
 All School Musical—3
 Political Club—4
 Secretarial Club—3,4
 HARRY CRANDALL, JR.
 Baseball—1,2,3,4
 Basketball—1
 Football—1,2,3,4
 Track—1,2
 Varsity Club—2,3,4
 TERRI CROOKS
 Girls' Glee Club—3
 CAROL SUE CRUMRINE
 Dial Staff—4
 French Club—3
 GAA—1,2
 Junior Play Cast
 Language Club—1
 Latin Club—2
 Pep Club—4
 Political Club—4
 Senior Play Cast
 Student Council—2
 Usher Club—3,4
 CLARA LEE CRUSE
 Biology Club—2
 Pep Club—4
 Secretarial Club—3
 LAVINA CUSHMAN
 Junior Play Crew
 Senior Play Crew
 DAVID THOMAS DAKER
 FFA—1,2,3,4
 KENNETH C. DALLY
 FFA—1,2,3,4
 CAROL ANN DAMON
 Bible Club—1,2,3,4
 Co-op—4
 FHA—1,2,3,4
 Latin Club—2

Marshall Singers—1,2,3
 Spanish Club—3
 KATHLEEN J. DARLING
 FHA—3
 GAA—2
 SHARON KAY DEAN
 Biology Club—2,3
 Choir—1,2,3,4
 GAA—1,2
 Junior Play Crew
 Senior Play Cast
 Volunteens—3,4
 TEDDY V. DE FOREST
 Football—1
 Industrial Arts Club—2
 Junior Achievement—3,4
 Track—2,3
 JOHN M. DEVENNEY
 Football—1
 Manager—2,3
 Track—2
 LEE ANN DOLLOWAY
 Co-op—3,4
 French Club—1
 DIANA DUNN
 Language Club—2
 Political Club—4
 Senior Play Crew
 SANDRA R. DUNN
 FHA—1
 CHRISTINE E. EILER
 All School Musical Crew—3
 Band—1,2,3
 Biology Club—1
 GAA—1,2
 Junior Play Crew
 Latin Club—1,2,3,4
 Political Club—4
 Senior Play Crew
 Volunteens—3,4
 DOROTHY K. EISENHAUER
 Cheerleading—1,2,3,4
 Dial Staff—4
 GAA—1,2,3
 Junior Play Crew
 Latin Club—1
 Pep Club—1,2,3
 Spanish Club—3
 DAWN (COATS) EKDAHL
 Amateur Show Crew—2
 Junior Play Crew
 JANETTE ELYEA
 Debate—2
 Forensics—2,3
 French Club—4
 GAA—1,2
 Latin Club—1,2,3
 National Honor Society—3,4
 Political Club—4
 Student Council—1,2,3
 Junior Class Secretary
 PATRICIA J. ELYEA
 Amateur Show Crew—2
 Co-op—3,4
 FHA—1,2,4
 French Club—2
 GAA—1,2
 Political Club—4
 HAROLD ENGELTER
 Band—1
 Basketball Manager—2,3
 Bible Club—1,2,3
 Football—1,2,3,4
 French Club—1,2,3,4
 Junior Play Cast
 Varsity Club—3,4
 JOAN C. ERSKINE
 GAA—1
 JEANNETTE YVONNE FARMER
 Biology Club—3
 Co-op—4
 Secretarial Club—3,4
 Spanish Club—3
 NEWELL FAUSZ
 Band—1,2,3
 Co-op—4
 RALPH FITCH

MARY FITZPATRICK
 Biology Club—2
 GAA—1,2
 Junior Play Crew
 Language Club—1
 Latin Club—2,3
 Political Club—4
 Senior Play Crew
 Usher Club—4
 PETE FLYNN
 Co-op—3,4
 Vice President—3
 Football—1,2
 Latin Club—1
 JEFFREY W. FOUNTAIN
 Biology Club—1
 Football—1
 Junior Play Crew
 Political Club—4
 CAROL ANNE FRUIN
 GERI FRUIN
 Co-op—3,4
 SANDRA KAY FRY
 Political Club—4
 Spanish Club—4
 MICHAEL GALLOWAY
 Basketball—1,2
 Co-op—3,4
 Cross Country—2
 Football—1
 Language Club—1
 Tennis—2
 MERLENE K. GETTY
 Biology Club—2,3
 FHA—1,2,3,4
 GAA—1,2,3,4
 Junior Play Cast
 Senior Play Cast
 JAMES HOYT GLADSTONE
 All School Musical—2,3
 Biology Club—1,2,3
 Dicken's Carolers—2,3,4
 Dance Band—4
 High School Choir—2
 Marshall Singers—3,4
 Political Club—4
 DIANNE GLAZA
 PHILLIP GOODMAN
 LAWRENCE L. GOODWIN
 Co-op—4
 Cross Country—4
 Track—3,4
 JAMES S. GORDIER
 JULIA MAUDE GRIMM
 Band—1,2,3,4
 Orchestra—3,4
 KAREN GUSTAFSON
 Language Club—1,2
 Political Club—4
 Secretarial Club—3,4
 DAVID A. HAGERTY
 Football—1,2,3,4
 Varsity Club—4
 JONELL HALL
 BRITTA HANSEN
 FHA—1,2
 Secretarial Club—4
 Spanish Club—1
 MARY LOU HARRIS
 GAA—1,2
 Language Club—2
 Latin Club—1
 Model U.N.—3
 Pep Club—4
 Political Club—2,3,4
 Spanish Club—3,4
 Student Council—4
 Committee Chairman
 WILLIAM JOHN HARTMAN
 Baseball—2
 Basketball—1,2,3
 Football—1,2,3,4
 Junior Rotarian
 Latin Club—1,2,3
 Sophomore Class President
 Track—1
 Varsity Club—3

SHARON DIANE HAYES
 All School Musicals—1,2
 Junior Achievement—3,4
 Marshall Singers—1,2,3,4
 Political Club—4
 Volunteers—4
 JUDY MARIE HASTINGS
 Secretarial Club—1,2,3,4
 RAUL HERRERA
 Cross Country—2,3,4
 Track—1,2,3,4
 Varsity Club—4
 DONALD W. HINDENACH
 Band—2,3,4
 Biology Club—1,2,3
 Dance Band—4
 Junior Rotarian
 Latin Club—1,2,3,4
 Pep Band—3,4
 Political Club—3,4
 Senior Play Cast
 GARY J. HOCKETT
 Co-op—4
 Football—1,2
 Track—2,3
 JEAN MARIE HODGES
 BYRON M. HOFFMAN
 FFA—1,2,3
 Football—1,2,3,4
 Track—1,2,3,4
 JOHN M. HOLT
 All School Musical—3
 Band—3,4
 Biology Club—1
 Junior Play Crew
 Pep Band—4
 Senior Play Crew
 ROBERT L. HOPKINS
 Cross Country—2
 Football—1
 Track—3,4
 RUTH (SHIPPEL) HOWELL
 DENNIS HUGHES
 Co-op—4
 FFA—1,2,3,4
 JOETTA KAYE HUMPHRIES
 FHA—3,4
 GAA—3
 Junior Play Crew
 Latin Club—1,2
 Senior Play Crew
 MARY E. JIMENEZ
 Co-op—4
 Secretarial Club—4
 Spanish Club—2
 JOHN JOHNSON
 Cross Country—4
 Football—1,2,3
 French Club—2
 Junior Play Cast
 Political Club—3,4
 Track—3,4
 DONNA KARNIS
 Co-op—3,4
 FHA—1,2,3
 French Club—1,2
 Secretarial Club—3,4
 LESLIE KINCAID
 Industrial Arts Club—2,3
 Tennis—1
 MICHAEL KING
 RICHARD A. KING
 Industrial Arts Club—2
 Track 2,3,4
 BERNITA ANN KORNOELY
 KARLENE RENE KRAUSHAAR
 Cheerleader—3,4
 GAA—1,2
 Junior Play Cast
 Language Club—1
 Latin Club—2
 Pep Club—1,2,3,4
 Senior Play Cast
 Usher Club—4
 Volunteers—3
 KATHY ANN KRAUSHAAR
 Biology Club—2
 GAA—1,2
 Junior Play Crew
 Latin Club—2,3,4
 Political Club—4
 Senior Play Crew
 Volunteers—3
 SUE E. KUNZL
 FHA—1,2,3
 JAMES E. LAING
 KENT L. LAKE
 CAROL LANGAN
 Art Club—2,3
 Dial Staff—4
 Art Editor
 GAA—1,2,3
 Junior Play Cast
 Language Club—1
 Pep Club—1,2
 Political Club—4
 LEE E. LAPHAM
 Track—1
 DAVID E. LAUPP
 Co-op—3,4
 Cross Country—2,3
 Track—4
 SANDRA LAUTENSLAGER
 FHA—1,2,3
 GAA—1
 WILLIAM S. LAUTZENHEISER
 KATHLEEN RUTH LEACH
 Co-op—4
 FHA—1,2,3,4
 Merit Chairman—2
 State Convention Delegate—2
 Vice President—3,4
 GAA—1
 Homemaker of Tomorrow Award—3
 Junior Play Cast
 Senior Play Cast
 Usher Club—4
 KAY ELLEN LEACH
 GAA—2,3,4
 Language Club—1,2
 ANDREW W. LEVENFELD
 Biology Club—1
 Cross Country—3
 Debate—1
 Football—1
 Golf—1,2
 Latin Club—1,2
 GARY R. LEWIS
 LINDA JANENE LEWIS
 FHA—3,4
 GAA—1,2,3
 Junior Play Crew
 Language Club—1
 Latin Club—2
 National Honor Society—3,4
 Pep Club—1
 Secretarial Club—4
 Senior Play Crew
 Usher Club—3,4
 JOE LIBBRECHT
 Football—1,2
 Junior Play Crew
 Daniel I. LIVINGSTON
 Industrial Arts Club—2,3
 MICHAEL KENNETH LOWDER
 Biology Club—1
 Industrial Arts Club—4
 Language Club—1
 Latin Club—2,3
 National Honor Society—3,4
 Political Club—4
 Tennis—1,2,3,4
 JERRY N. MAISNER
 Cross Country—4
 Industrial Arts Club—3,4
 President—4
 Secretary-Treasurer—3
 National Honor Society—3,4
 Political Club—4
 LARRY MAISNER
 All School Musical Crew—1,3
 Amateur Show Crew—2,4
 Biology Club—1
 Dance Band—1,2,3
 Dial Staff—4
 Photographer
 Language Club—1
 Orchestra—1,2,3,4
 Pep Band—3
 Red Squire Staff—4
 Photographer
 Staff Writer
 SUZANNE KAY MARLETTE
 Latin Club—4
 Political Club—4
 Senior Play Crew
 GERALD MARSHALL
 Golf—1,3
 Tennis—2
 MARY MATHEWS
 Junior Orchestra
 RUTH MATHEWS
 FHA—4
 Marshall Singers—4
 MARY CHERYL McFARLAND
 French Club—1
 GAA—1,2
 Spanish Club—1
 PHILLIP L. MCKELVEY
 Basketball—1
 Football—1
 Golf—1,2
 Industrial Arts Club—4
 Secretary-Treasurer—4
 Latin Club—1,2,3,4
 Political Club—4
 Vice President—4
 Student Council—3,4
 Junior Class President
 Track—3,4
 CLAUD A. McMILLEN
 Co-op—4
 Football—3
 GARY L. McMURTRIE
 Art Club—2,3
 BILL MEDLER
 Baseball—1
 Basketball—1,2,3
 Football—1,2
 Track—1
 RICHARD A. MERRITT
 FFA—1,2,3,4
 Sentinel—3
 Vice President—4
 PAUL MESTEMAKER
 Biology Club—1,3,4
 Golf—2,3,4
 Junior Play Cast
 Latin Club—1,2,3,4
 Political Club—4
 Senior Play Cast
 Varsity Club—3,4
 THOMAS CHARLES METZGER
 Basketball—1
 Football—1,2
 Language Club—1
 Track—1,2,3,4
 Wolverine Boys' State—3
 HANNA MARIA MEYER
 French Club—4
 GAA—4
 Political Club—4
 ROBERT LEE MEYER
 All-star Band—3
 Band—1,2,3,4
 Vice-President—4
 Biology Club—1
 Golf—2
 Orchestra—4
 Pep Band—3,4
 Senior Play Cast
 Track—3,4
 JANE E. MILLER
 Biology Club—2,3
 GAA—1,2
 Latin Club—2
 Political Club—4
 JON L. MILLER
 STEVE L. MILLER
 Biology Club—1,2
 Industrial Arts Club—4
 Spanish Club—3
 Tennis—1,2,3,4

NANCY JANE MONJE
Dial Staff—4
Editor
J-Hop Committee Chairman
Junior Play Crew
Latin Club—1,2
Political Club—2,3,4
Senior Play Cast
DONNA JEAN MORSE
Biology Club—2,3
FHA—1
GAA—1,2,3
GARY H. MOREY
Football—2
DONNA JEAN MORSE
Biology Club—2,3
GAA—1,2,3
ANN H. MOSES
Art Club—3
GAA—1,2
Junior Play Cast
Language Club—1
Pep Club—2
Spanish Club—2,3
Student Council—1
MARK MOSIER
All School Musical—3
Art Club—4
Biology Club—2,3
French Club—3,4
Junior Play Crew
Language Club—2
Latin Club—1
Marshall Singers—3
Senior Play Cast

MARGIE MUSIC
Choir—2,3
Library Club—2,3,4
LINDA LOUISA NAIL
Co-op—3,4
FHA—3,4
Treasurer—4
ALAN B. O'LEARY
Football—1,2,3
Junior Play Cast
Tennis—1,2
JOHN ORNS
FFA—1,2,3,4
Track—2
MARGARET A. OVERLY
GAA—1,2

DELLA JEAN OWENS
Bible Club—1,2,3
Library Club—2
MARK PATTON
Basketball—1,2
Football—1,2
French Club—1
Track—1,2
SUSAN PAUL
GAA—1,2
Latin Club—1,2
Pep Club—1
Secretarial Club—4
Spanish Club—4
Volunteers—4
DUANE PEACE
JAMES EUGENE PECK
Band—1,2,3,4
Bible Club—2,3,4
Biology Club—1
Industrial Arts Club—4
Language Club—1
Pep Club—4
Political Club—4
Orchestra—4
Spanish Club—2
CHRISTINE PEDERSEN
Pep Club—4
Political Club—4
Senior Play Cast
KAREN PEET
Co-op—4
FHA—2,4
French Club—1,2
GAA—1

TOM PEMBERTON
Band—1,2,4
Track Manager—1,2
Varsity Club—1
KAY LORRAINE PETCH
GAA—1
PAULA ANN PETERS
All School Musical Crew—3
French Club—1,2
GAA—1,2,3
Junior Play Cast
Pep Club—1,2,3,4
Secretary-Treasurer—4
Political Club—4
Secretarial Club—3
Spanish Club—3,4
Senior Play Cast
Student Council—2,3,4
L. GENE PETTIT
Bible Club—1,2,3,4
Co-op—4
Cross Country—2,3,4
FFA—1,2,3
Football—1
Spanish Club—3
Track—1,2,3,4
Varsity Club—2,3,4
CHRISTINE PIPER
Cheerleader—1
Dial Staff—4

Managing Editor
GAA—1,2,3
Language Club—1,2
Political Club—3,4
MARY C. POE
Co-op—3,4
Secretarial Club—4
VICKIE RAY POTTER
Art Club—1,2,3
GAA—1,2,3
French Club—3
Junior Play Crew
Language Club—2
Latin Club—1
Pep Club—2,4
Senior Play Crew
DELL EMMETT POWERS
Band—1
Basketball Manager—2
Football—1,2,3
Industrial Arts Club—2,3

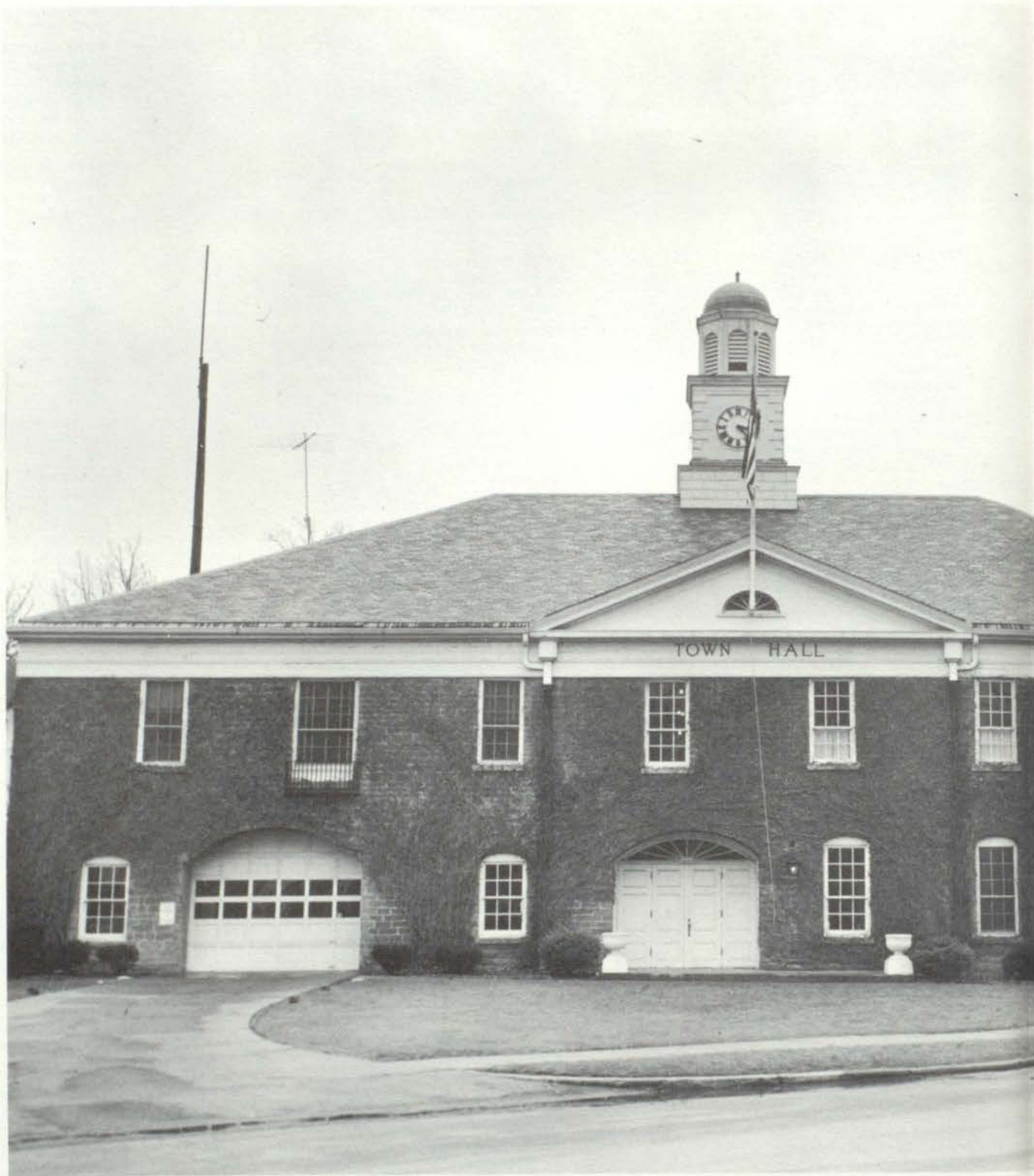
ANTON R. PRESECAN
Baseball—1,2,3,4
Cross Country—2,3,4
Track—1,2,3,4
Varsity Club—2,3,4
STEVE PURDY
Senior Play Cast
JOHN A. RAMOS
Baseball—1,2,3,4
Basketball—1,2,4
Football—1,2,3,4
Junior Play Crew
Track—1,2,3,4
Spanish Club—2,3,4
Secretary-Treasurer—3
President—4
Varsity Club—2,3,4
Secretary-Treasurer—4
DARLENE E. RAPP
FHA—3,4
SHARON ANN RAPP
FHA—1
KARA J. REAGLE
FHA—1,2,3
GAA—1,2,3
PHOEBE JEAN REESE
FHA—4
National Honor Society 3,4
JILL LYNN ROCCO
GAA—1
Pep Club—1
Spanish Club—2
CAREN M. ROSE
Co-op—4
GAA—1,2,3

DENNIS A. RUGG
Co-op—4
FFA—1,2,3
TIMOTHY W. SAMSON
Football—1
Tennis—1,2
TERRY L. SCHEICK
Football—3
FFA—1,2,3,4
HAROLD W. SCHMIDT
THOMAS E. SCHNAITMAN
Co-op—3,4
Football—1
Golf—1,2
Language Club—1,2

KATHY ANN SCHROEDER
Art Club—3
Biology Club—1
French Club—3,4
GAA—2
Latin Club—2
National Honor Society—3,4
MARY SHARP
Co-op—4
GAA—1,2,3
Latin Club—1
JOSEPH C. SHIPPELL
Audio-Visual Club—2,3,4
Football—1
Senior Play Cast
ROGER G. SHREVE
Football—1
FFA—1,2,3,4

VICKI LYNN SHREVE
Bible Club—2
GAA—1
SHIP SIEFKE
Basketball—1,2
Football—1
Track—1,2
TERRY SIEVERS
Co-op—4
FFA—1,2,3,4
CURTIS SIMMONS
FFA—1,2,3,4
LINDA JANE SIMMONS
FHA—1,2,3
GAA—1
Red Squire Staff—4
Secretarial Club—3,4
GREG SLIGHT
Basketball—4
Track—4
CAROL SMITH
All School Musical—1
Biology Club—1,2,3
GAA—1,2
FHA—1,2,3
Pep Club—1
MICHAEL SMITH
Basketball—1
Football—1,2
TAL SMITH
Co-op—3,4
Football—1
LARRY STEVENS
Bible Club—4
Football—1,2,3,4
Varsity Club—3
BARB STINSON
BRUCE STUART
Industrial Arts Club—4
DEBORAH STUART
Junior Play Crew
Political Club—1,2,3,4
Spanish Club—1,2,3,4
ALAN JAY STULBERG
Biology Club—1
Cross Country—2,3,4
Junior Rotarians
National Honor Society—3,4
Orchestra—1,2,3
Track—2,3,4
Varsity Club—2,3,4
LARRY TAYLOR
Baseball—1,2,3,4

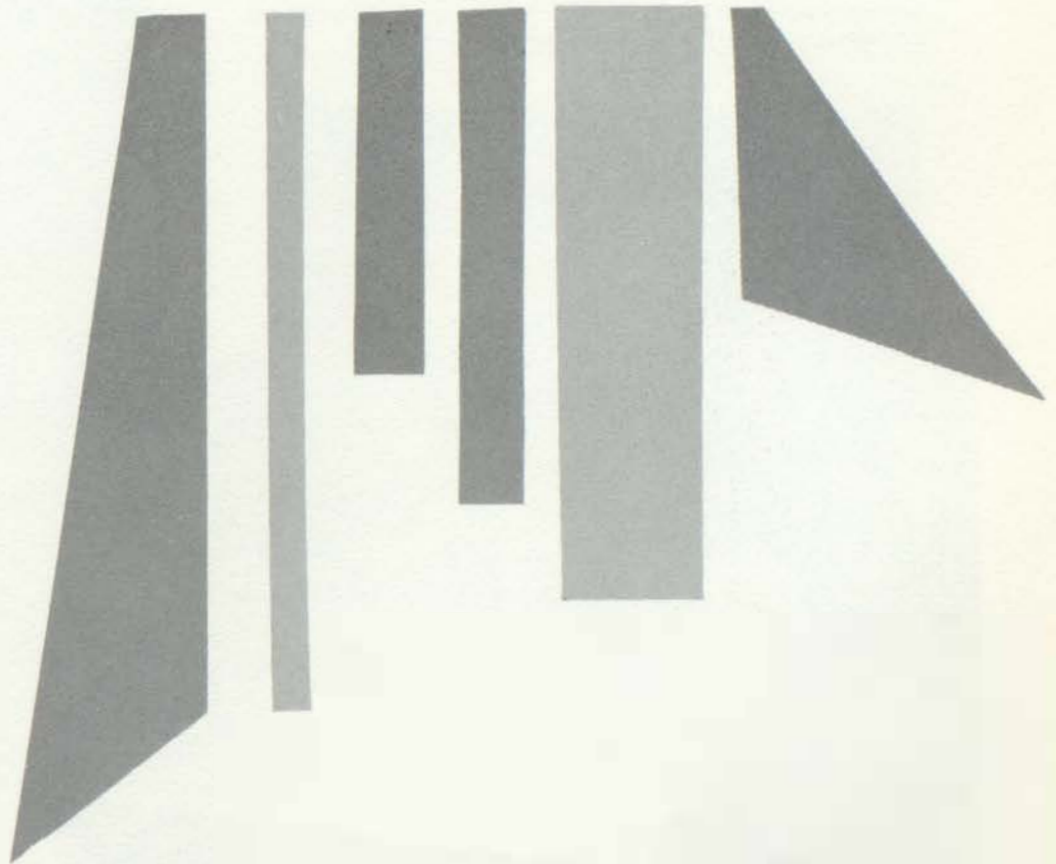
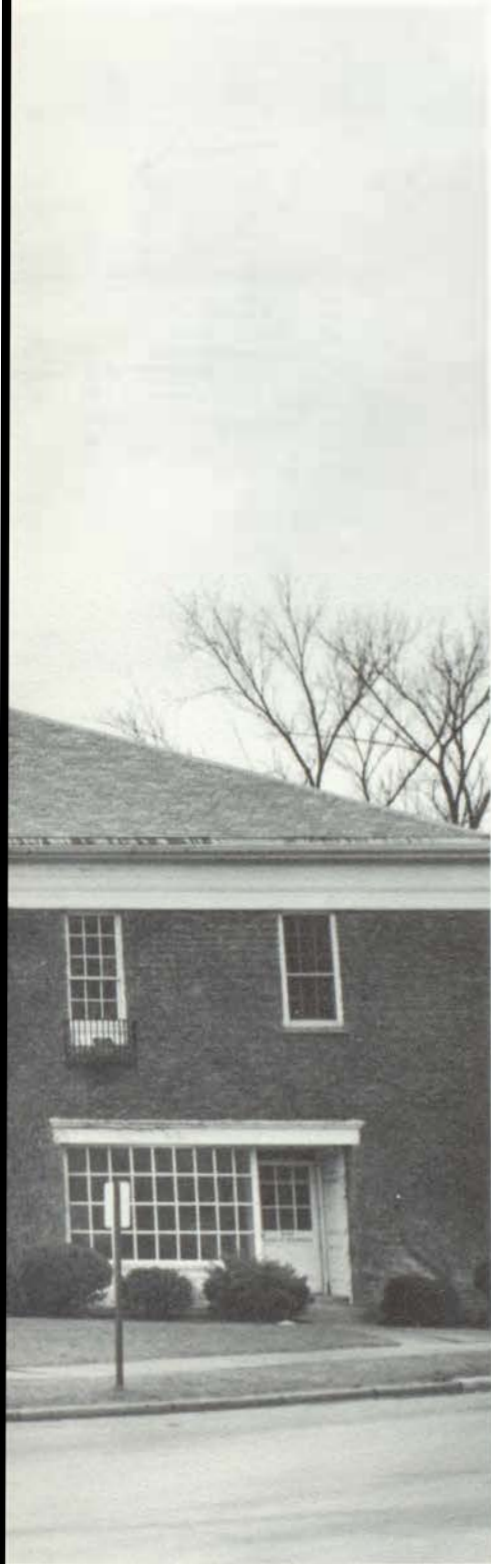
Basketball—1,2,3,4
 Football—1,2,3,4
 Golf—4
 Latin Club—1,2,3
 Student Council—1,2,3,4
 Senior Class President
 Track—1,2,3
 DENNY THOMAS
 Basketball—1,2,3,4
 Football—1,2,3
 Latin Club—1,2
 Varsity Club—3,4
 PHILLIP THOMPKE
 Baseball—1,2,3,4
 Football—1,2,3,4
 Varsity Club—3,4
 CAROL LYNNE THYER
 All School Musical—1,3
 Biology Club—2
 FHA—3
 GAA—1,2,3
 Junior Play Cast
 Language Club—2
 Latin Club—1
 Orchestra—1,2,3,4
 Pep Club—4
 Senior Play Crew
 Volunteers—3,4
 DIANA LEE TOLAN
 All School Musical—1,3
 Choir—1,2,3
 GAA—1,2,3
 Junior Play Cast—Student Director
 Language Club—1
 Pep Club—1,2,3,4
 Political Club—4
 Secretarial Club—4
 Senior Play Student Director
 CATHERINE ANNE TRUPIANO
 All School Musical—1,3
 Band—1,2,3,4
 Choir—1
 French Club—1
 GAA—1
 Language Club—2
 Orchestra—3,4
 JERRY L. TUCKER
 Basketball—1,2,3,4
 Football—1,2,3,4
 Student Council—2
 Track—1,2,3,4
 Varsity Club—2,3,4
 JOHN H. TWIST
 All School Musical—3
 Biology Club—1,3
 French Club—3,4
 Junior Play Cast
 Language Club—1
 Latin Club—2,3,4
 President—3
 Political Club—3,4
 President—4
 Red Squire Staff—4
 News Editor
 Senior Play Cast
 Student Council—4
 Varsity Club—3,4
 BOB ULRICH
 Co-op—3,4
 Football—1,2,3,4
 Track—1,2
 Varsity Club—2,3,4
 C. AMY VAN DENBERG
 FHA—1,4
 Latin Club—1
 MARY ANGELA VAN NESS
 All School Musical Crew—3
 Art Club—1,2,4
 French Club—3
 GAA—1,2
 J-Hop Chairman
 Junior Play Crew
 Language Club—2
 Latin Club—1,3
 Pep Club—1,4
 President—4
 Political Club—3,4
 Red Squire Staff—4
 Art Editor
 Senior Play Crew
 CYNTHIA D. VAN SYCKLE
 FHA—3,4
 GAA—1
 Spanish Club—2,3
 LARRY D. VAN SYCKLE
 Co-op—3,4
 Football—1
 TERRI L. VANZANDT
 GAA—1,2
 FHA—1
 French Club—1,2
 Junior Play Crew
 BETH A. WAIDELICH
 Biology Club—1
 French Club—3,4
 GAA—1,2,3,4
 Junior Play Cast
 Language Club—1
 Latin Club—2,3
 Pep Club—4
 Red Squire Staff—4
 Exchange Editor
 Senior Play Cast
 Student Council—4
 Senior Class Secretary-Treasurer
 Usher Club—2,3,4
 LINDA SUE WALLEEN
 Art Club—1,2,4
 Bible Club—1,2
 GAA—1
 DAVID KENNETH WALTERS
 Band—1,2,3,4
 Biology Club—1,2
 Junior Play Cast
 Industrial Arts—2
 Latin Club—1,2
 Orchestra—3,4
 Political Club—4
 Publications—4
 Editor
 Tennis—1,2,3,4
 JOHN WALTERS
 Football—1,2
 French Club—3
 Spanish Club—2,3
 Track—1
 PATRICIA LEE WARMAN
 GAA—1,2
 Language Club—1,2
 Pep Club—4
 Political Club—4
 GAIL E. WARSOP
 FHA—2,3,4
 GAA—1
 KEN WASHBURN
 Co-op—3,4
 FFA—1,2,3,4
 LAWRENCE J. WATERS
 All School Musical—1,3
 Amateur Show—1,2,4
 Dance Band—1,2,3,4
 Senior Band—1,2,3,4
 DON WEBERLING
 Football—2
 Manager—1
 DENNIS RAY WEERS
 FFA—1,2,3,4
 BRENDA KAY WHEELER
 FHA—3,4
 GAA—1
 Junior Play Crew
 Language Club—1
 Senior Play Crew
 DENNY WHEELER
 Baseball—1,2
 Football—1,2,3,4
 Golf—1
 Track—1
 CHARLOTTE ELLEN WHITNEY
 All School Musical—3
 Biology Club—1
 French Club—3
 GAA—2
 Junior Play Cast
 National Honor Society—3,4
 Pep Club—4
 Political Club—2,3,4
 Secretary—3,4
 Red Squire Staff
 Senior Play Cast
 Usher Club—4
 PAMELA R. WILLIAMS
 Bible Club—1,2
 Dickens Carolers—2,3
 LINDA M. WILLISON
 Junior Play Crew
 Senior Play Crew
 PATRICIA WILSON
 Debate—1
 Forensics—1
 French Club—4
 GAA—1
 Latin Club—1
 Political Club—4
 Student Council—1,2
 Class Secretary—1
 Usher Club—2,3,4
 Assistant Head Usher—3
 Head Usher—4
 SHERYL LYNN WILSON
 FHA—2
 GAA—1
 DARWIN WINCHELL
 Football—3
 Tennis—1,2
 ANDREA LEE WINTERS
 Bible Club—1,2,3,4
 President—4
 Biology Club—1
 FHA—3,4
 Reporter—4
 French Club—1,2
 Junior Play Cast
 Language Club—1
 Library Club—2
 Political Club—4
 RON E. WOLF
 Cross-Country—3,4
 Industrial Arts—3
 Track—3,4
 Varsity Club—4
 PHALA WRIGHT
 Volunteers—1
 MARGIE LYNN YAODES
 GAA—1,2
 Latin Club—1,2,3
 Volunteers—3,4
 RONALD A. YOST
 Band—1,2,3,4
 Co-op—3,4
 Pep Band—2,3
 Political Club—3,4
 JON YOUNGDAHL
 Biology Club—1
 Dance Band—4
 Orchestra—4
 Tennis—1
 MICHAEL E. ZINGREBE
 THOMAS E. ZERBEL
 Co-op—4
 Industrial Arts—2
 Junior Rotarian—3
 PENNY ANN ZIMMERMAN
 GAA—1,2
 Junior Play Crew
 Red Squire—4
 Feature Editor
 Spanish Club—3
 Student Council—1,2,3
 Secretary-Treasurer—3



ADVERTISEMENTS

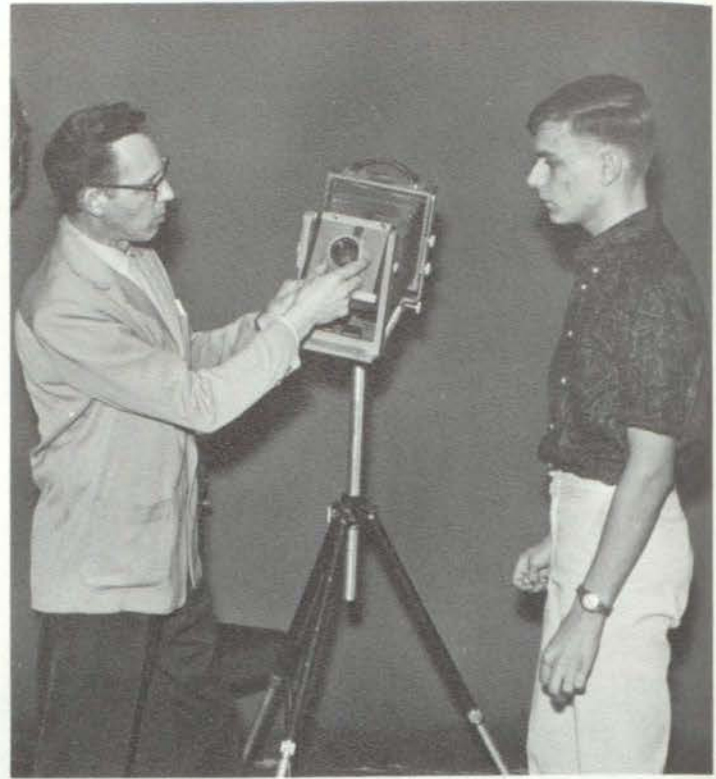
With true perspective into the future, the Marshall businessman knows how very important the youth of today is to him and his business. Through his investment in the advertising which is to follow, he is investing in Marshall's young people, who will be the leaders of tomorrow.

Through their interest and support of all phases of Marshall High School life, this Dial was made possible.

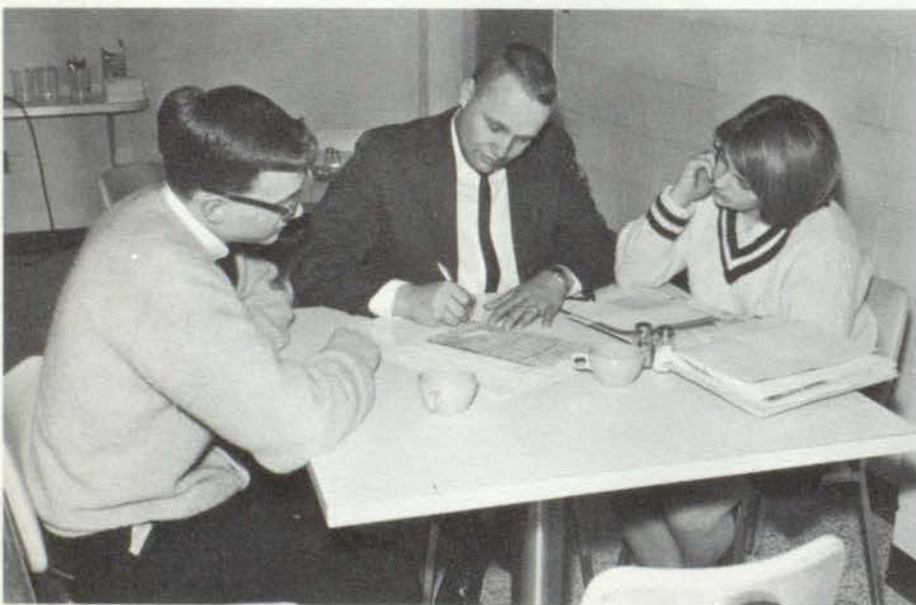




Local businessmen, such as Mr. Jack Twist, aided us greatly by purchasing advertising space in the *Dial* from Tom Bischoff, business manager.



Mr. Robert Beller, local photographer, made many of the pictures in the *Dial* possible through his close work with Larry Maisner of the yearbook staff.

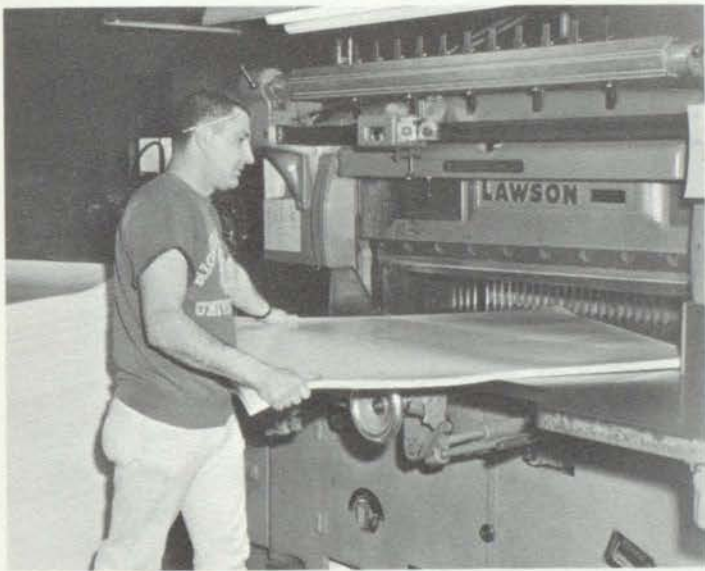


Mr. Robert Stechschulte, Edwards Brothers consultant, goes over yearbook plans with Mr. Haefele, Journalism advisor, and Nancy Monje, editor.

On behalf of the Marshall High School *Dial* staff, I would like to extend my appreciation to all those citizens and businessmen whose cooperation made this yearbook possible.

Nancy Monje
Dial editor

Congratulations to the
M. H. S. BAND
for their
First Division Rating
at the
Fall Marching Festival
1965



**PAK-R-BOARD
CORPORATION**

343 S. Mulberry



For Fashions for You
And Your Home, Too!

SHOP AT

J. H. CRONIN

Dry Goods Store

101 W. Michigan

S. H. LEGGITT CO.



20th Anniversary Year

HOME OFFICE: MARSHALL, MICHIGAN

ELKHART, INDIANA ARLINGTON, TEXAS CORDELE, GEORGIA

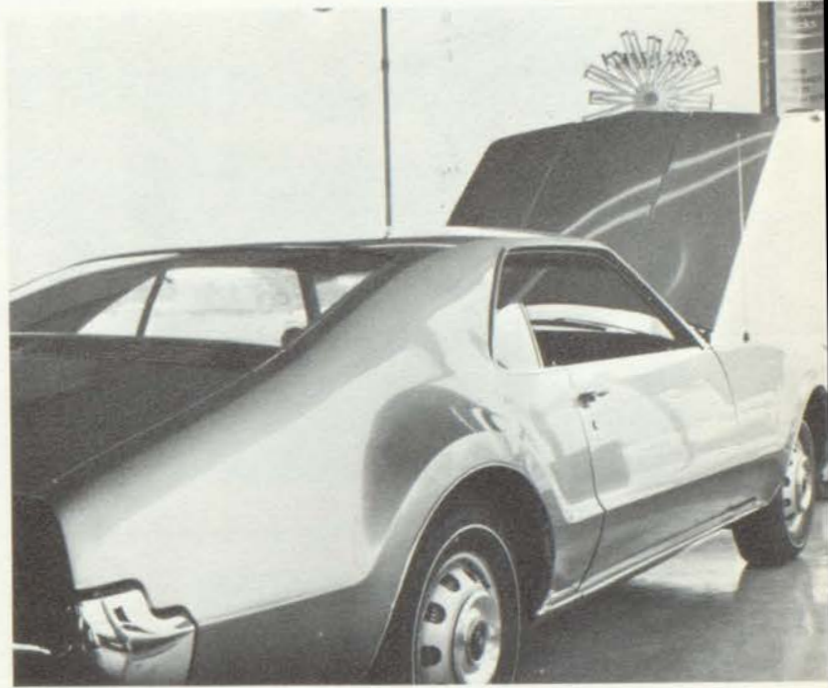
Compliments
of
WMRR
All-Heart Radio

Marshall,
Michigan



TIDEY MOTOR SALES

1201 W. Michigan Avenue



Cars of every style,
make, and model.
Prices range for the
young and the old.



Compliments
of
JOHN C. MEEK
C. L. U.

**BILL REDFIELD
& SONS, INC.**

Appliances and TV-Radio
Electrical Supplies & Hardware
O' Brien's Paints

105 Redfield Plaza Marshall, Mich.



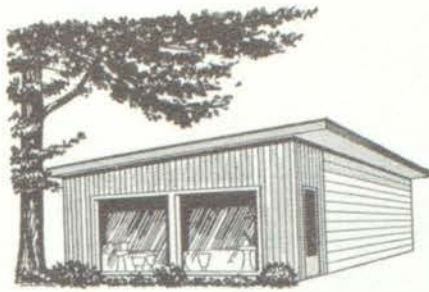
POWER SHOP
WOMEN'S APPAREL

131 W. Michigan Avenue

F. G. Seaman & Company

Sporting Goods and
Athletic Equipment





SARGENT'S *Flowers*

"THE STORE WITH THE REDWOOD FRONT"

203 S. MARSHALL

Roll out and
enjoy yourself

— at —

**MARSHALL
BOWLING LANES**

10 Modern Lanes
1150 W. Michigan

Drake Bookkeeping And Office Supply

142 W. Michigan Avenue

*For school supplies, office
supplies and equipment*



Cuber Furniture Company

For the best in fine furniture





Come - Alive Styles

from

MILLER-AALBREGTSE

120 W. Michigan

ST 1-8931

Court

FUNERAL HOME

phone STORy 1-5151



Member
THE ORDER
OF THE
GOLDEN
RULE



Corner
EXCHANGE AND GREEN • • • MARSHALL • MICHIGAN

“Life is only what you make it” is a true statement to be sure. And what you, the 1966 graduates of Marshall High School, make of your lives will perhaps be the destiny of our country. We sincerely wish each of you the very best of luck, knowing that you will in turn do your best to make America forever known as the land of the free and of unequalled opportunity.



YELLOW TRANSIT

FREIGHT LINES

**EAT AT THE
RITZEE**
The finest in foods

**Hamburgs
Chicken
Sea Food**



**MICHIGAN
NATIONAL BANK . . .**

To help you in so many ways, Co-op
students employed by Michigan National
Bank administer friendly service to patrons

W. Michigan





FOR QUALITY SHOES
FOR THE WHOLE FAMILY

VISIT . . .

**SHERMANS FAMILY
SHOE STORE**

138 W. Michigan

For the Best in
Sandwiches, Soups and Chili
Chicken - Steak

STOP AT THE

DUG OUT



For Excellent
Interior or Exterior
PAINTS

**REDMAN'S PAINT
& WALLPAPER**

127 West Michigan



COMPLETE
INSURANCE
COVERAGE

BELCHER
Insurance Agency
226 W. Michigan

If you want to be
in style in 1966

—SHOP—

VOGELREUTER'S
122 West Michigan



NATIONAL FOOD
STORE

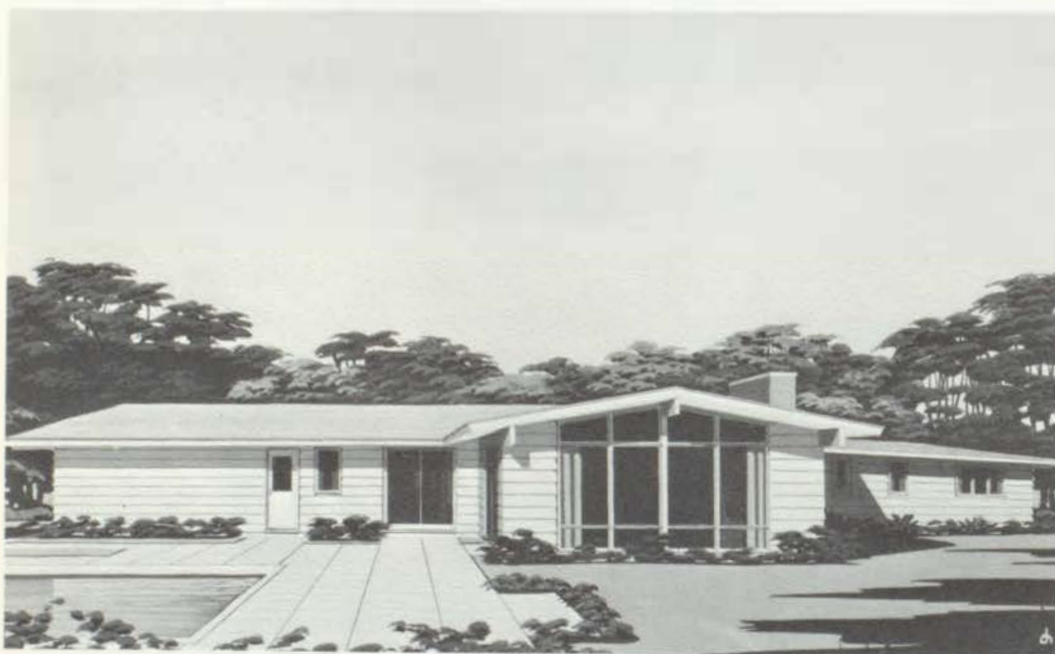
MARSHALL



**2
Hour
Cleaners**

STEMBOL-CONRATH, INC.

1120 W. Michigan



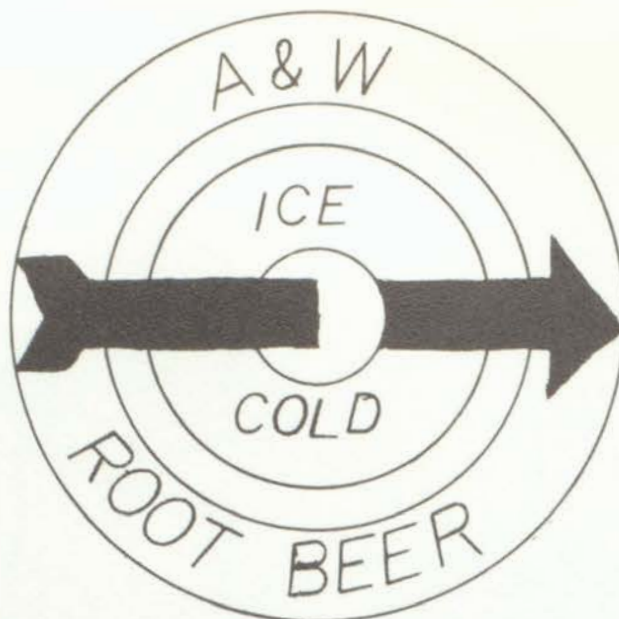
**THINKING
ABOUT
A
NEW
HOME?**

**Visit our plant and offices for latest designs
plus top quality materials.**



Congratulations to the
CLASS OF 1966

MARSHALL



DRIVE-IN



LUSE - HOPKINS

Your Friendly Dodge Dealer

NEW & USED CARS

"Join the Dodge Rebellion"

111 N. Madison

Get Your Weekly
WKFR and WLS
Tune-dex at
**CENTRAL
TELEVISION**
106 East Michigan





MARSHALL ELECTRIC AND WATER WORKS

109 E. Michigan

THE BURROWS' STORE

156 West Michigan

"The Store That Carries A
Little Bit of Everything"

Including
Norcross Greeting Cards
and
Gilbert Chocolates



"Honoring and Congratulating the Good Citizens Award Winner of the Class of 1965"



"BUILDING THRIFT AND HOMES IN MARSHALL SINCE 1920"

"THERE IS A
DIFFERENCE
. . . WHERE
YOU SAVE!"



Don Anderson

Marshall Savings and Loan Association

**MARSHALL
LUMBER CO.**

Phone ST 1-3945

330 S. Kalamazoo



**CHAPMAN TRACTOR
SALES**

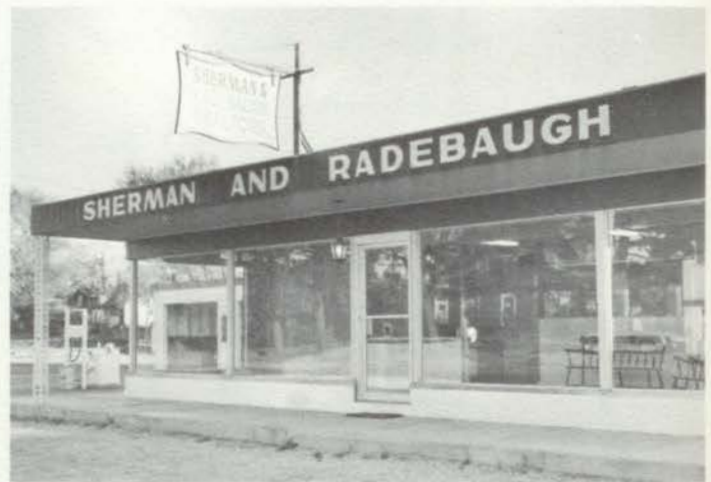
Wheel Horse
has a lawn and



garden tractor

for you

- 10 models • 6 to 12 hp
- 37 attaching tools
- Wheel-A-Matic Drive
- More standard equipment
- Dial-a-Hite control



For the most complete coverage
in the Marshall area,
list your property with

**SHERMAN & RADEBAUGH
REALTORS**

843 West Michigan
781-5464

FOR DISTINCTIVE DINING
IN MICHIGAN . . .



Corning Packaging Company

C O R N I N G

MARSHALL, MICHIGAN



EVERY DAY IS A
SPECIAL DAY AT

G. C. MURPHY COMPANY

143 W. Michigan



V. I. P.

**(Very Important
Person)**

We mean Miss Linda Gilger, a 1965 graduate of Marshall High who is employed at Michigan Bell as a long distance operator.

If you are interested in a worthwhile career after graduation—

Apply Now

**MICHIGAN BELL
TELEPHONE COMPANY**

84 E. Michigan Avenue
Battle Creek, Michigan

An Equal Opportunity Employer

Kelser Funeral Home

103 E. MANSION ST
MARSHALL MICHIGAN



24 - HOUR
AMBULANCE
SERVICE

GEORGE A. KELSER

PAUL S. KELSER



Complete Coverage of All
Marshall High School Events

MARSHALL EVENING CHRONICLE

Your LOCAL NEWSpaper



For Clean Shaves
and Sharp Haircuts . . .

VISIT

PALMER'S BARBER SHOP

106 N. Eagle



NEEDHAM DRY CLEANERS

for the best in Dry Cleaning Service

118 East Michigan



R & K at the Olympics

The R&K backboards used at the Tokyo Olympics were the same as those used in the Marshall gym . . . except the Olympics had 2 and MHS has 10.

RONAN & KUNZL, Inc.



REISH'S SHOES

149 W. Michigan

Your Friendly Family Shoe Store

Miss Wonderful
Red Goose
John C. Roberts



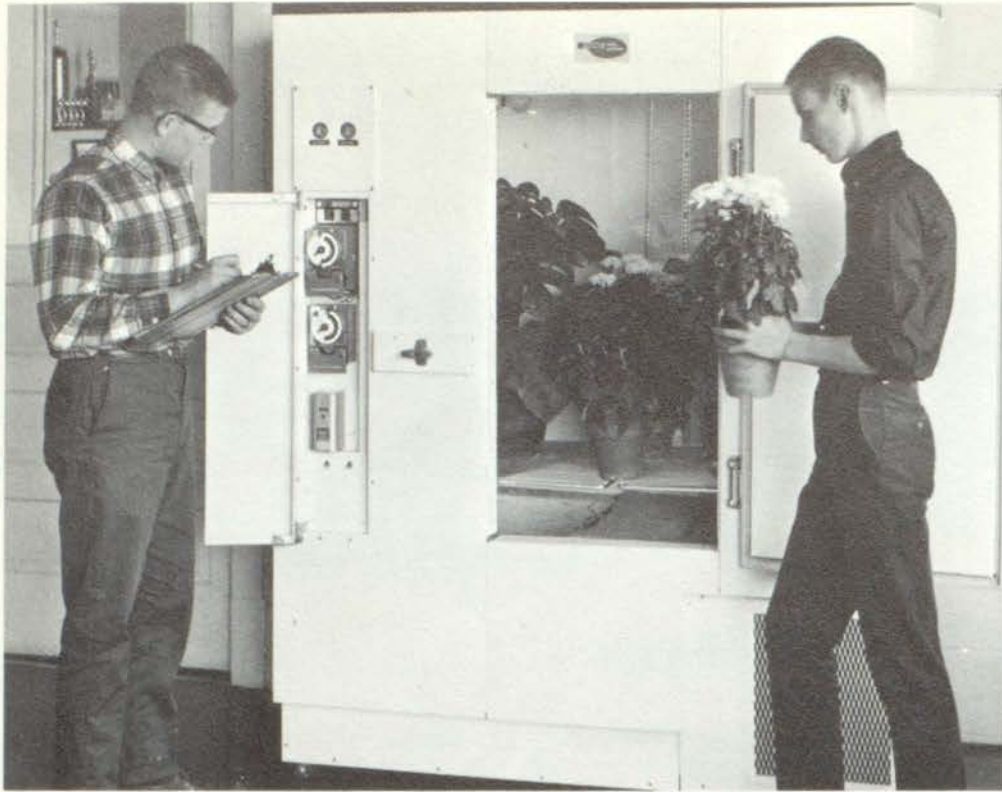
LATEST FASHIONS

for the Entire Family

—at—

VAUGHN COMPANY

202 W. Michigan



A Leading
Manufacturer of
Controlled
Environment
Equipment

This Environment Equipment
is used in educational institu-
tions and research laboratories
throughout the United States
and the rest of the world.

SHERER-GILLET COMPANY

Marshall, Michigan



WIGENT'S BROTHERS

SERVICE



Marshall Sport Center

—ROD AND REEL REPAIR—

—Lawn Mower and Outboard Service—

Buck Warner



For the Finest in
Drugs, Cosmetics and Candy

IT'S

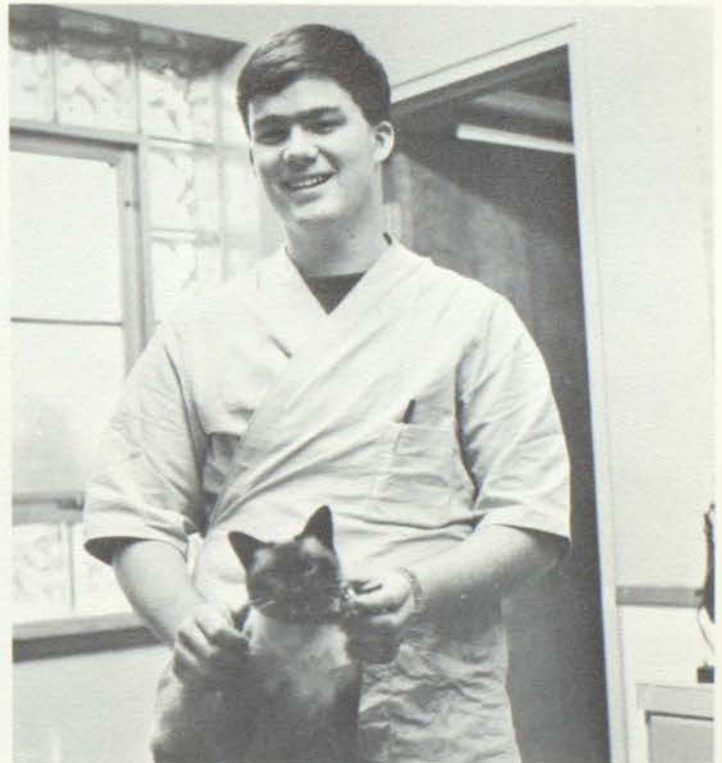
CARRINGTON'S PHARMACY

Phone ST 1-8351



Brownfield's Laundry & Dry Cleaning

118 S. Jefferson ST 1-3661



Congratulations Seniors of 1966

MARSHALL VETERINARY CLINIC



Hair Styles by

FERRARI

"Your Hair Is Our Concern"

110 W. Michigan Ave. 781-2243

Marshall, Michigan

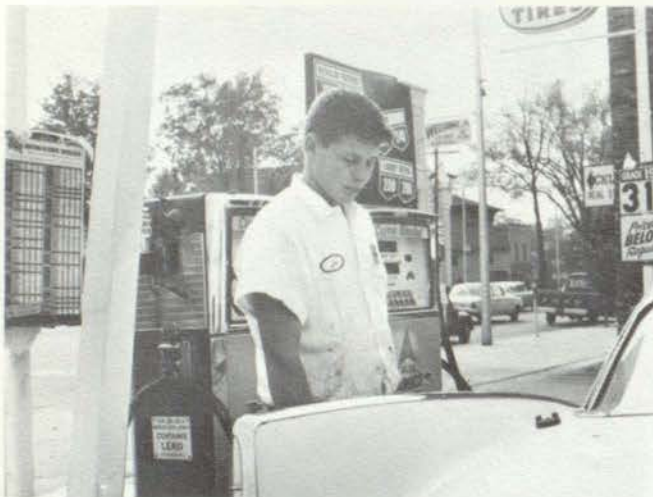


THE GOLDEN EIGHT BALL

Open Till 12 Midnight
7 days a week

"Family Fun for Everyone"

108 Redfield Plaza
781-2553



WALTERS TIRE SHOP

Complete Tire Service
Over 25 Years Experience

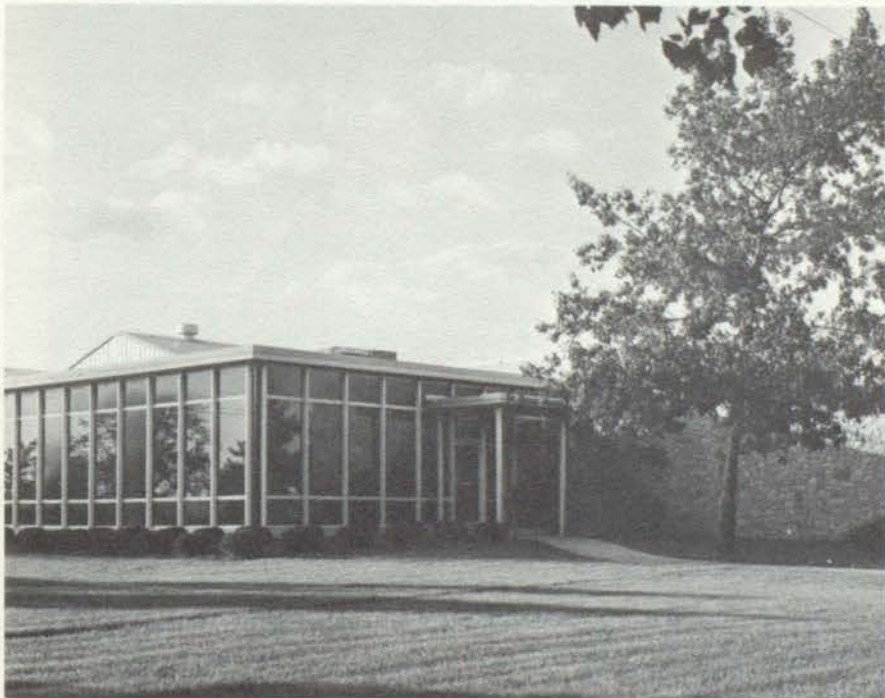
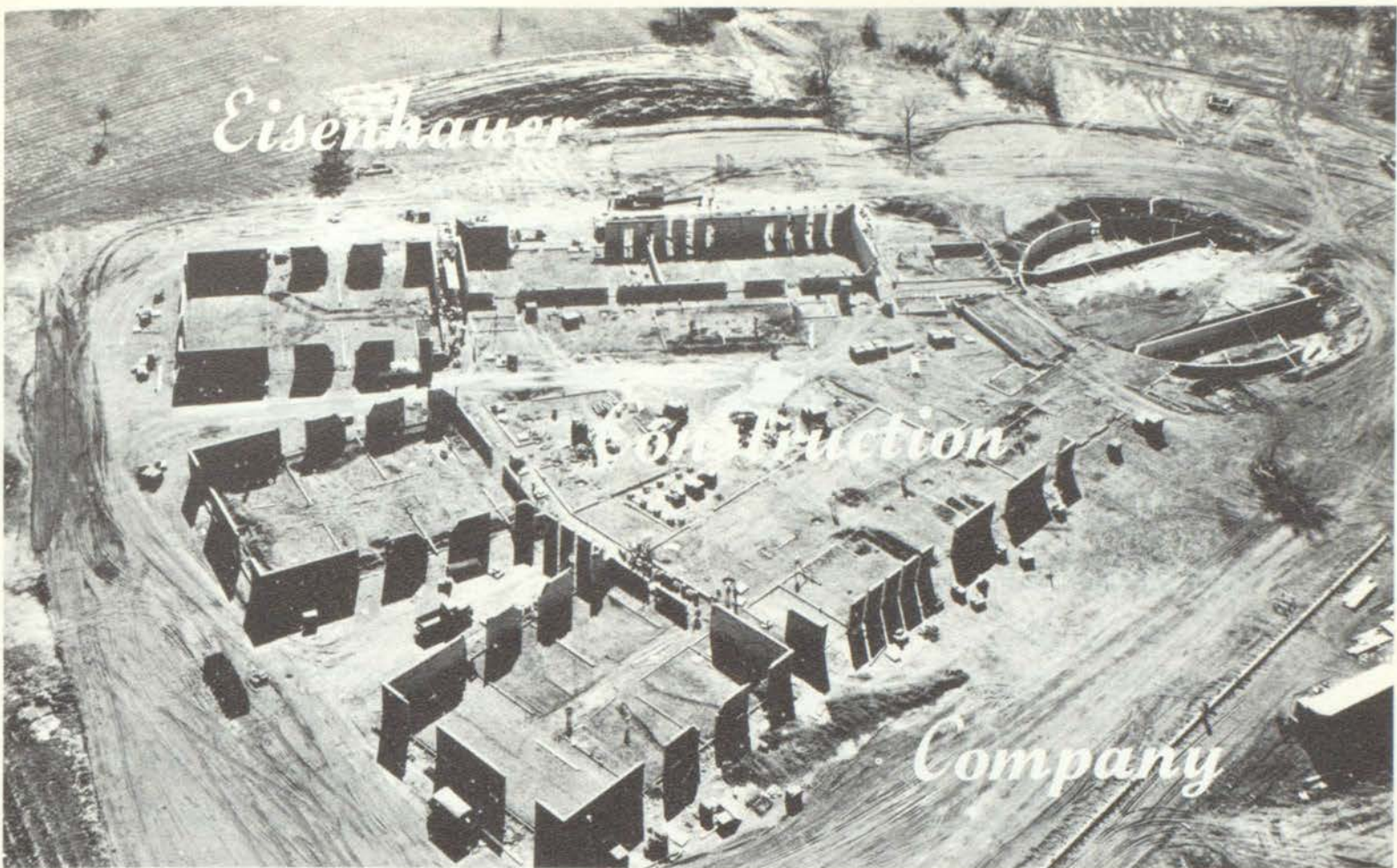
220 W. Michigan Ave.
781-7342



STEAKHOUSE

For Your Finest Dining
with

L. M. Allen as your host



Manufacturers of
Colorful Boxes

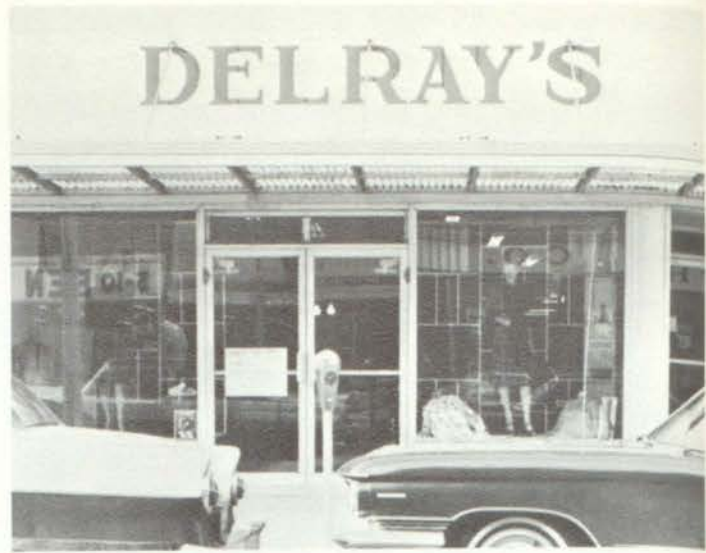
**ST. REGIS
PAPER CO.**

**Folding Carton
Division**

820 Industrial Road
Marshall,
Michigan



Congratulations
to the
Class of 1966
406 S. Linden
Marshall, Michigan



DELRAY'S

For the Best in
Quality and Styling

Ladies and Childrens Ready to Wear

146 W. Michigan St. 781-8181

VISIT
THE FIRESIDE INN
FOR DELIGHTFUL DINING
826 West Michigan



Orange Blossom
ENGAGEMENT AND WEDDING RINGS



HEMMINGSEN & HODGES, INC.
DEPENDABLE JEWELERS
111 EAST MICHIGAN AVENUE
MARSHALL



Double Gold Bell Stamps
Every Wednesday

*Located at
Redfield Plaza*



JACK'S WEST SIDE

844 W. Michigan Avenue

781-8119

HUTCHINS CAFE

*"Our Food Is Tasty
From Soup to Pastry"*



HUTCHINS CAFE

"OUR FOOD IS TASTY
FROM SOUP TO PASTRY"

Roofers

- NEW INSTALLATIONS
- REPAIRS OF ALL KINDS

GOLD SEAL ROOFING MATERIAL

- HOMES • FACTORIES
- BARNs • CHURCHES • STORES
- FARM BUILDINGS
- STORM DAMAGE • CEMENT WORK • DORMERS
- BUILT UP ROOFS • SHINGLES • SIDING
- ALUMINUM STORM WINDOWS and DOORS

FREE
ESTIMATES

781-5343



YOUR MARSHALL ROOFER
201 ELK • MARSHALL

TEEN'S HEAD FOR
VANDENBURG'S

108 W. Michigan 781-7331



For An After School Snack
You'll Never Lack
IF YOU VISIT

LOUIE'S BAKERY

144 W. Michigan
The Finest in Bakery Goods



FOX FLORIST



PRINTING
BINDING
LITHOGRAPHY

**STANDARD
PRINTING
COMPANY**

818 Industrial Road
ST 1-8201 Marshall

BULOVA - HAMILTON
Jms and Fisher
Charms & Bracelets

**R. G. KING'S
Jewelry Store**

117 W. Michigan



DISCRIMINATE
PEOPLE ALWAYS
SHOP AT

**WOLF FLOOR
COVERING**

BEST WISHES SENIORS
WAIDELICH CONSTRUCTION
COMPANY

Never look down to test the ground before taking your next step: only he who keeps his eyes fixed on the far horizon will find his right road . . . Dag Hammarskjold





BILL'S HAIR STYLES

for the finest in
professional
Hair Care

News time
when Jeff Albaugh
fills you in on the
latest news
WALM 1260



IN COSMETICS IT'S HEMMINGSSEN REXALL DRUG STORE

that can supply you with all
of your needs. We carry all
of the popular and well-
known lines.





FOR A CLEAN CUT
VISIT

**JONES AND MUNN
BARBER SHOP**

VENN FURNITURE COMPANY

Complete home furnishings in
all styles.

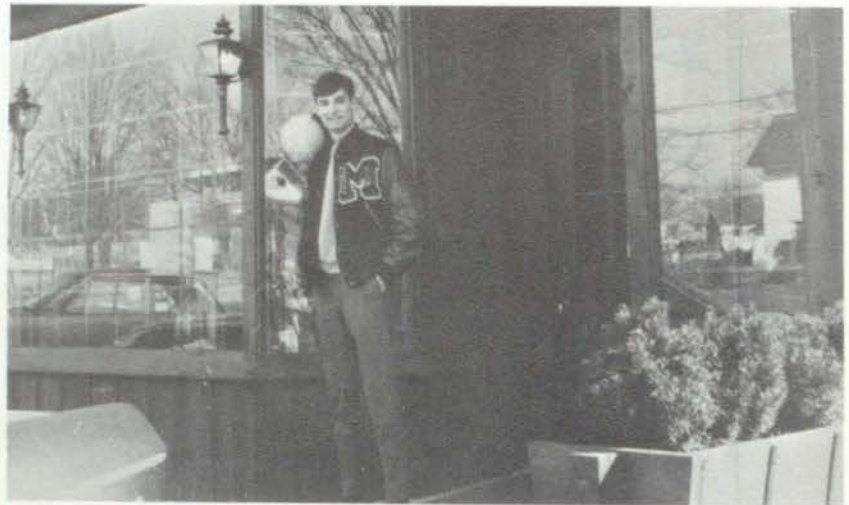
Carpeting-Rugs-Gifts

Lane Cedar Chests

Convenient Low-down-payments

827 East Michigan Avenue

Open Saturday and
Monday evenings



**TOM PETCH STANDARD
SERVICE CENTER**

Complete Service Tune-Up
302 West Michigan Avenue

**CONGRATULATIONS
to the
CLASS OF 1966**

**OAKDALE
DEVELOPMENT
COMPANY**

Richard C. Waidelich

George W. Hindenach

Small store
with BIG
store prices



**FREDDIE'S
MARKET**

802 S. Marshall
ST 1-3959

SHOP AT THE
SIGN OF THE
SPARTAN



THANK YOU
for the
Many Years of
Your Patronage

DEUEL LUMBER
COMPANY

108 N. Hamilton



TOWN AND COUNTRY
SHOPPE

FOR THE FINEST IN GIFTS
125 W. Michigan Avenue



Compliments to the Class of 1966 from the

ROBERTS AGENCY, INC.

Insurance in Marshall since 1929

VAN A. ROBERTS



For the Very Latest
As seen in *Vogue*, Shop
in Marshall at

THE VOGUE SHOP



BOB



ELL

Congratulations From the Gang at

BELLE



THELMA



BON



ROD

IN MEM



W. STUART JAMIESON

ORY OF



PATRICIA PACE

The first part of the document discusses the importance of maintaining accurate records of all transactions. It emphasizes that every entry, no matter how small, should be recorded to ensure the integrity of the financial statements. This includes not only sales and purchases but also expenses, income, and transfers between accounts.

The second part of the document provides a detailed breakdown of the accounting cycle. It outlines the ten steps involved in the process, from identifying the accounting entity to preparing financial statements. Each step is explained in detail, with examples provided to illustrate the concepts.

The third part of the document focuses on the classification of accounts. It discusses the different types of accounts, such as assets, liabilities, equity, revenue, and expense accounts, and how they are used to record and summarize business transactions.

The fourth part of the document covers the process of journalizing and posting. It explains how transactions are recorded in the journal and then posted to the ledger accounts. This process is essential for maintaining the double-entry system and ensuring that the books are balanced.

The fifth part of the document discusses the preparation of financial statements. It outlines the steps involved in calculating the net income, preparing the income statement, balance sheet, and statement of owner's equity. It also discusses the importance of comparing these statements to the previous period to identify trends and changes.

The sixth part of the document covers the closing process. It explains how the temporary accounts (revenue, expense, and withdrawal accounts) are closed to the permanent accounts (assets, liabilities, and equity accounts) at the end of the accounting period. This process is necessary to reset the temporary accounts for the next period and to update the equity account.

The seventh part of the document discusses the importance of adjusting entries. It explains how these entries are used to record accruals, deferrals, and other adjustments that are necessary to ensure that the financial statements are accurate and reflect the true financial position of the business.

The eighth part of the document covers the preparation of the closing entries. It outlines the steps involved in recording the closing entries, which are used to transfer the balances of the temporary accounts to the permanent accounts and to update the equity account.

The ninth part of the document discusses the importance of maintaining accurate records of all transactions. It emphasizes that every entry, no matter how small, should be recorded to ensure the integrity of the financial statements. This includes not only sales and purchases but also expenses, income, and transfers between accounts.

The tenth part of the document provides a summary of the key concepts discussed in the document. It emphasizes the importance of accuracy, consistency, and transparency in the accounting process, and encourages students to apply these principles in their own work.

